



QUALITY MISSION GLIDERS & ROCKERS

*Quality Craftsmanship
in Every Detail*

2023 Catalog



A wide-angle photograph of a golden wheat field stretching to the horizon. The sky is filled with large, billowing white and yellow clouds, suggesting a bright, sunny day. The wheat stalks are in sharp focus in the foreground, showing their texture and color. A thin line of trees is visible on the horizon.

From a Place Rich in Heritage.

A Dream Becomes a Reality

D&E Workshop rose from a humble beginning and one man's vision for his life's work. At the young age of 14, Daniel Lehman created his first chair in his father's small workshop; "just a small little shop, had a couple saws in it," Daniel explains.

While working in an RV factory, Daniel's entrepreneurial spirit and need for a creative outlet became so strong that he opened his own woodworking shop in 1994. By 2002, he was able to hire employees to help turn his unwavering vision into rocking chairs and gliders unlike any others in the industry.

D&E has no plans to become a mega-business. Instead, they prefer to stay true to their heritage, involving family in the shop's operations, respecting the amazing gifts of nature and overseeing the creation of every piece.

What keeps D&E Workshop customers coming back? The answer is clear: They appreciate the unique designs, quality, attention to details, strong work ethic and D&E's dedication to personalized customer satisfaction.



Table of Contents

Flip-Out Instructions	6
Sebana Series	10-13
Swan Back Series	14-18
4-Post High Back Series	19-23
Ashland Glider Series	7-9
J-Mission Gliders	24-25
Oakland Series	26-29
Royal Mission Series	30-32
Aspen Rockers & Gliders	33
Economy Rockers	38-39
Rockers	34-37
Hiland Series	40-41
Country Chairs Series	42-45
Quick Ship Info	46-47

D & E Workshop has always been on the cutting edge of creating innovative designs in wood crafting to provide honest and personable service to our customers through our heirloom quality products.

We provide excellent quality foam and over 300 fabrics from Heartland Fabrics to choose from including regular, Performance, Revolution fabrics and genuine, faux and Ultra leather.

In the column at right are a few special features and newer products we offer that stand out from other Glider/Rocker builders.

All information in this catalog is the latest available at the time of publication approval. Colors in the photos are just a representation and may not match exactly to the actual materials they are representing.

NEW!

1. ARCTIC ROCKER, ROYAL ECO ROCKER (page 39)



NEW!

ASHLAND PANEL GLIDER and OTTOMAN (page 7)



2. LOCKING SYSTEM (page 20)
Has 4 different stations, from locking in the upright position to get in or out of the chair to tilted all the way back and locked for relaxing.



3. FLIPOUT FOOT RESTS (page 7)
D & E's own unique design for convenience and comfort.



4. CHAIR-N-HALFS (pages 17, 22)
7" wider than standard gliders for those who want more room...to sit a toddler or dog next to them or for any other reason.



5. 097 ROYAL JUMBO ROCKER (page 31)
Heavy built and 2" wider than the standard rocker, designed for those who want/need more seat space.



6. HEADREST ENGRAVING (page 32)
The ultimate way to personalize a special rocker/glider (only available on Royal Mission styles).



7. QUICK SHIP PROGRAM (pages 46-47)
We can have your choice of 4 Glider/Rockers shipped to the finish shop within 5 business days!!





Bearings are rated at 200 lb. a piece, come with an 8 year warranty and have easy access to change if they go bad.



All Rockers and Gliders are built out of 5/4 lumber which is 1-1/8" thickness.



Hardware and swivels are made in the U.S.A.



Tie-on seat cushion



Manufactured seat cushion



Hook on back cushion

We Use Heartland Fabrics (Over 400 Fabrics to Choose From)

Ultra Leathers...*Nice Soft Feel.*

What are they?

- 100% Polyurethane Surface
- 100% Reinforced Rayon Backing
- Soap and Water Cleanable
- Earth Friendly
- Green Card Certified
- Abrasion: 400,000 Double Rubs

Flammability: CATB 117 NFPA 260-Class-1 UFAC Class-1

ONE LESS THING TO WORRY ABOUT!

Modern technology meets comfort and sophistication with Crypton Home Fabric. Soft, durable, and stain-resistant, Crypton Home Fabric is available in a wide array of textures and vibrant colors. And Crypton's breakthrough protection is woven into every fiber so it won't ever wear away. Crypton, where beauty meets durability.



For more detailed cleaning information, visit cryptonathome.com

We also added a stack book put together with fabrics of Crypton Home Fabrics. (Called Performance Fabrics)

What are Performance Fabrics?

Performance Fabrics are super easy to clean. They are not self cleaning. Most liquid spills will simply blot off the surface with a dry towel. For more difficult stains just follow these simple spot-cleaning instructions:

- Wipe away excess mess using a clean dry towel
- Mix a simple soap and water solution
- Apply and agitate with a soft bristle brush
- Blot with a clean towel
- Rinse thoroughly and repeat if necessary

We recommend mixing 1 tsp enzyme laundry detergent, like Tide or Cheer with 2 cups warm water. And remember, soap attracts dirt, so rinse thoroughly.

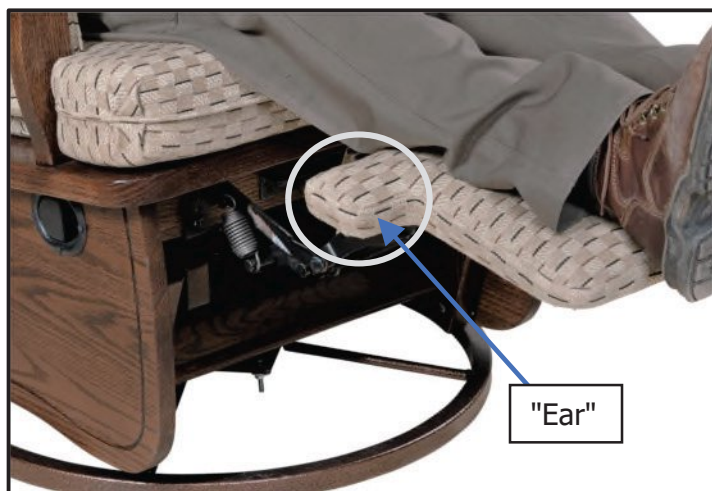
Soft • Durable • Easy to Clean • Resists Stains and Odors

Green Guard Gold Certified Technology

Crypton Home Fabrics
for more details visit cryptonathome.com

Instructions for Lowering Flipout

Flipout shown on pages 8, 14, 16, 17, 18, 20



DO NOT FORCE FLIPOUT DOWN!

Putting the flipout down without using the ears to pull up and back to release it will break the mechanism that holds it in place in the up position.



1. To put the flipout down, place your ankles in front of both ears.



2. Use both heels to gently pull up and then back (toward you) until you feel the mechanism release.



3. Slide your feet to the middle of the flipout and press down until it latches in the closed position

Ashland Panel Glider

Available in Swivel or Regular Glide with locking system and Ottoman or Flipout Footrests!



052 Ashland Panel Glider

Shown with standard wood arms and ottoman

Overall size: 44"H x 31"D x 29"W

Seat size: 21"D x 23"W

Distance between armrests: 20"

Floor to top of seat cushion: 18"

Swivel glider: 1" Higher

090 Ashland Panel Glider Ottoman

Overall size: 15"H x 17"D x 19"W

Ashland Inlay Swivel Glider

Available in Swivel or Regular Glide and Ottoman or Flipout Footrests!



151 Ashland Swivel Glider

Shown with optional padded armrest
and Flipout footrest

Overall size: 44"H x 31"D x 29"W

Seat size: 20"D x 21"W

Distance between armrests: 19½"

Floor to top of seat cushion: 19"

Non swivel glider: 1" Lower



Ashland Inlay Glider

Available in Swivel or Regular Glide and Ottoman or Flipout Footrests!



Softer foam back cushion goes over the continuous webbing that is stapled to fabric on the back to replace the normal slats.

051 Ashland Glider

Shown with standard wood arms and ottoman

Overall size: 44"H x 31"D x 29"W

Seat size: 21"D x 23"W

Distance between armrests: 20"

Floor to top of seat cushion: 18"

Swivel glider: 1" Higher



095 Ashland Inlay Ottoman

Overall size: 15"H x 17"D x 19"W

Available in Oak, Cherry, ¼ Sawn White Oak, Brown Maple, Hickory and Elm



Sebana Series Gliders

Available in Red Oak for Quick Ship. For details see pages 46-47

Available in Swivel or Regular Glider with no Flipout

200 Sebana Slat Regular Glider (shown)

300 Sebana Slat Swivel Glider

Overall size: 43½" H x 32" D x 30" W

Seat size: 20" D x 22" W

Distance between armrests: 20½" W

Floor to top of seat cushion: 18"

Swivel glider: 1" higher



900 Sebana Slat Ottoman

Overall size: 15¾" H x 17" D x 19" W

Optional padded armrest

Sebana Series Rocker



400 Sebana Slat Rocker

Overall size: 42"H x 32"D x 30"W
Distance between armrests: 20½"W
Floor to top of seat cushion: 18"

Available in Oak, Cherry, ¼ Sawn White Oak, Brown Maple, Hickory and Elm

Sebana Series Gliders

Available in Swivel or Regular Glider with no Flipout



203 Sebana Saratoga Glider (shown)

303 Sebana Saratoga Swivel Glider

Overall size: 43½"H x 32"D x 30"W

Seat size: 22"W x 20"D

Distance between armrests: 20½"

Floor to top of seat cushion: 18"

Swivel glider 1" higher



Optional padded armrest



903 Sebana Saratoga Ottoman

Overall size: 15¾"H x 17"D x 19"W



Sebana Series Gliders

Available in Swivel or Regular Glider with no Flipout

201 Sebana Inlay Regular Glider

301 Sebana Inlay Swivel Glider (shown)

Overall size: 43½"H x 32"D x 30"W

Seat size: 20"D x 22"W

Distance between armrests: 20½"

Floor to top of seat cushion: 19"

Non Swivel is 1" lower

Optional padded armrest



901 Sebana Inlay Ottoman

Overall size: 15¾"H x 17"D x 19"W

Available in Oak, Cherry, ¼ Sawn White Oak, Brown Maple, Hickory and Elm

Swan Back Gliders

Available in Swivel or Regular Glider with Locking System and Ottoman or Flipout Footrests!

170 Swan Back Swivel Glider Formerly 171

Shown with optional flipout.

Overall size: 41½"H x 33"D x 29"W

Seat size: 20"D x 20"W

Distance between armrests: 20"

Floor to top of seat cushion: 19"

Non swivel is 1" lower



Detail of swivel base.



*The back cushion has its own
unique built in headrest!*

Swan Back Gliders

Available in Swivel or Regular Glider with Locking System and Ottoman or Flipout Footrests!

070 Swan Back Glider

Overall size: 41½"H x 33"D x 29"W

Seat size: 20"D x 20"W

Distance between armrests: 20"

Floor to top of seat cushion: 18"

Swivel glider: 1" Higher



Note: This gliders seat height can be lowered up to 1½" by reducing the thickness of the foam seat and the height of the wood base. (Not available on swivel base)

093 Ottoman

Overall size: 15"H x 17"D x 19"W

Swan Back Minnie Glider

Available in Swivel or Regular Glider with Ottoman or Flipout Footrests!



071 Swan Back Minnie Glider

Shown with optional flipout footrest.

Overall size: 37½"H x 30"D x 28"W

Seat size: 17"D x 19"W

Distance between armrests: 17"

Floor to top of seat cushion: 16"

Swivel is 1" Higher



Seat is 2" lower, 1" narrower and 3" less deep than standard Swan Back Glider.

Swan Back Chair & Half Glider

Not Available in Swivel



072 Swanback Chair & a Half

Shown with optional flipout footrest.

Overall size: 41 ½" H x 33" D x 36" W

Floor to top of seat cushion: 18"

Seat size: 20" D x 27" W

Distance between armrests: 26 ½"

Available in Oak, Cherry, ¼ Sawn White Oak, Brown Maple, Hickory and Elm

Love Seat Glider

271 Swanback Loveseat Glider

Shown with and without optional flip-out footrest.

Overall size: 41"H x 30"D x 50"W

Distance between armrests: 40"

Floor to top of seat cushion: 18"



4-Post Minnie Swivel Glider

Available in Swivel or Regular Glider with Ottoman or Flipout Footrests!



161 4-Post Minnie Swivel Glider

Shown with standard wood arms and ottoman

Overall size: 40½"H x 27"D x 30"W

Seat size: 17"D x 19"W

Distance between armrests: 19"

Floor to top of seat cushion: 17"

Non swivel is 1" lower

- Available with padded arm rest as shown on page 21

Seat is 2" lower,
1" narrower and
3" less deep than
standard 4-Post
Glider.

091 Minnie Ottoman

Overall size: 14"H x 17"D x 19"W

Available in Oak, Cherry, ¼ Sawn White Oak, Brown Maple, Hickory and Elm

4-Post High Back Glider

Available in Swivel or Regular Glide with Locking System and Ottoman or Flipout Footrests!

092 4-Post High Back Glider

Shown with wood arms, optional flipout foot rest and Locking System.

Overall size: 44"H x 30"D x 32"W

Seat size: 21"D x 23"W

Distance between armrests: 20"

Floor to top of seat cushion: 18"

Swivel Glider: 1" higher

- Wood arms standard
- Removable headrest pillow standard



Locking System



Has 4 different stations, from locking in the upright position to get in or out of the chair to tilted all the way back and locked for relaxing.



Note: This gliders seat height can be lowered up to 1½" by reducing the thickness of the foam seat and the height of the wood base. (Not available on swivel base)

4-Post High Back Swivel Glider

Available in Swivel or Regular Glide with Locking System and Ottoman or Flipout Footrests!



192 4-Post High Back Swivel Glider

Shown with optional padded armrests & ottoman.

Overall size: 44"H x 30"D x 32"W

Seat size: 20"D x 20"W

Distance between armrests: 20"

Floor to top of seat cushion: 19"

Non Swivel glider: 1" lower

- Wood arms standard
- Removable headrest pillow standard



Detail of swivel base.

093 Ottoman

Overall size: 15"H x 17"D x 19"W

Available in Oak, Cherry, ¼ Sawn White Oak, Brown Maple, Hickory and Elm

4-Post High Back Chair & Half Glider

Not Available in Swivel

062 4-Post Highback Chair & a Half

Overall size: 44"H x 30"D x 39"W

Floor to top of seat cushion: 18"

Seat size: 21"D x 29"W

Distance between armrests: 27"



*Available
with Flipout
Footrest!*

193 Jumbo Ottoman

Overall size: 15"H x 17"D x 26"W

*Available with Padded armrests
as shown on page 21*

4-Post Love Seat Glider

Available with Double Flipout Footrest!

291 4-Post Low Back Love Seat

Overall size: 41"H x 30"D x 50"W

Distance between armrests: 40"

Floor to top of seat cushion: 18"

Also Available-

*- 292 4-Post High Back
with 4" higher back!*

*- Padded armrests as shown
on page 21*



Available in Oak, Cherry, ¼ Sawn White Oak, Brown Maple, Hickory and Elm

J. Mission Glider

Available in Swivel or Regular Glide with Locking System and Ottoman or Flipout Footrests!

Square Post Mission Look

081 J. Mission Glider

Overall size: 44"H x 31"D x 32"W

Seat size: 21"D x 23"W

Distance between armrests: 22"

Floor to top of seat cushion: 18"

Swivel glider: 1" higher

Optional padded armrests.



094 J. Mission Ottoman

Overall size: 15"H x 17"D x 19"W

J. Mission Glider (Rough Sawn)

Available in Swivel or Regular Glide with Locking System and Ottoman or Flipout Footrests!

Square Post Mission Look

081 J. Mission Glider Rough Sawn

Overall size: 44"H x 31"D x 32"W

Seat size: 21"D x 23"W

Distance between armrests: 22"

Floor to top of seat cushion: 18"

Swivel glider: 1" higher

Optional padded armrests.



*Available in
Wormy Brown
Maple Wood*

094 J. Mission Ottoman

Overall size: 15"H x 17"D x 19"W

Oakland Series

010 Oakland Slat Rocker

Shown in Maple with fabric seat.

Overall size: 44"H x 31"D x 29"W

Seat size: 19½"D x 21½"W

Distance between armrests: 21"

Floor to top of seat cushion: 18"

- Also available with headrest cushion as shown on page 28

Only Available in fabric or leather seats with 4" foam.



Oakland Series Glider

210 Oakland Slat Glider

Shown in ¼ Sawn White Oak

Overall size: 46½"H x 28"D x 29"W

Seat size: 19½"D x 21½"W

Distance between armrests: 21"

Floor to top of seat cushion: 18"

Swivel is 1" higher

- Also available with headrest cushion as shown on page 28



093 Oakland Ottoman

Overall size: 15"H x 17"D x 19"W



*Also available in
Swivel.*

Available in Oak, Cherry, ¼ Sawn White Oak, Brown Maple, Hickory and Elm

Oakland Series Rocker

Only Available in fabric or leather seats with 4" foam.

011 Bent Panel Rocker

Shown in Elm with fabric seat.

Overall size: 44"H x 31"D x 29"W

Seat size: 19½"D x 21½"W

Distance between armrests: 21"

Floor to top of cushion: 18"

- Also available with headrest cushion as shown below left.



*Available
Headrest
Cushion*



014 Oakland Supreme Panel Rocker

Shown in ¼ Sawn White Oak with headrest cushion and brass tacks around seat.



019 Oakland Footstool

Shown with brass tacks

Overall size: 15½"H x 13"D x 15"W

- Without tacks: 020

Oakland Series Rocker & Glider



012 Oakland Padded Back Rocker

Shown in Maple.

Overall size: 44"H x 31"D x 29"W

Seat size: 21½"W x 19½"D

Distance between armrests: 21"

Floor to top of seat cushion: 18"



*Only Available
in fabric or
leather seats
with 4" foam.*

112 Oakland Padded Back Glider

Shown in ¼ Sawn White Oak.

Overall size: 46½"H x 28"D x 29"W

Seat size: 20½"D x 21½"W

Distance between armrests: 21"

Floor to top of seat cushion: 18"

Swivel glider: 1" higher

093 Matching Ottoman

Shown on pages 15, 21

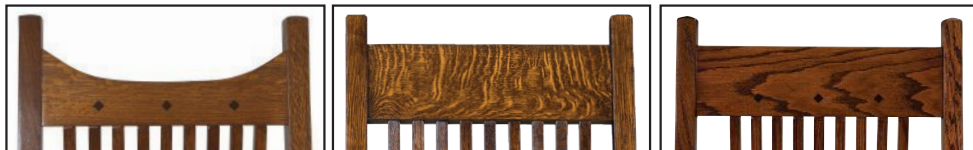
Overall size: 15"H x 17"D x 19"W



Available in Oak, Cherry, ¼ Sawn White Oak, Brown Maple, Hickory and Elm

Royal Mission Series Glider

These gliders can be ordered 3 ways at the same price (Please specify when ordering)



1. With cutout and diamonds 2. Flat top without diamonds 3. Flat top with diamonds

096 Royal Mission Regular Glider

Shown with padded fabric seat and cutout headrest with diamonds.

Overall size: 48"H x 30"D x 28"W

Floor to top of wood seat: 17½"

Floor to top of fabric or leather seat: 18½"

Distance between armrests: 21½"

Seat size: 21"W x 19"D

- Available in wood, fabric or leather seat



099 Royal Mission Ottoman

Shown with padded fabric top.

Overall size: 14"H x 17¼"D x 18½"W

- Available in wood top with inlays



196 Royal Mission Swivel Glider

Shown with wood seat and flat top without diamonds.

Overall size: 48"H x 30"D x 28"W

Seat size: 21"W x 19"D

Distance between armrests: 21½"

Floor to top of wood seat: 18½"

Floor to top of leather seat: 19½"



Bolted Arm attachment detail

Royal Mission Series Rocker

Jumbo Royal Mission rockers can be ordered 3 ways at the same price (Please specify when ordering)



1. With cutout and dia-

2. Flat top without dia-

3. Flat top with diamonds



097 Jumbo Royal Mission Rocker

2" wider than 098 on page 32

Also shown with wood seat and flattop headrest with diamonds.

Overall size: 48"H x 31"D x 29½"W

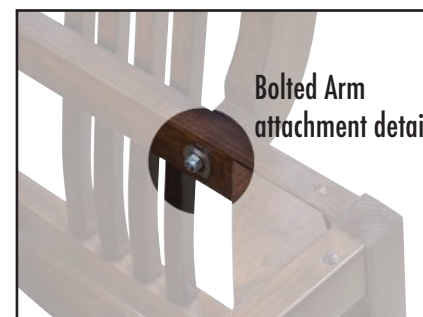
Seat size: 19"D x 23"W

Distance between armrests: 23½"

Floor to top of wood seat: 18"

Floor to top of fabric or leather seat: 19"

- Available in wood, fabric or leather seat

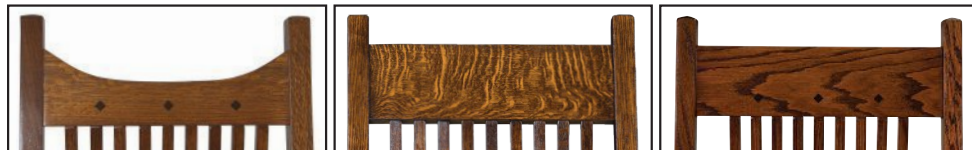


Bolted Arm attachment detail

Available in Oak, Cherry, ¼ Sawn White Oak, Brown Maple, Hickory and Elm

Royal Mission Series Rockers

Royal Mission rockers can be ordered 3 ways at the same price (Please specify when ordering)



1. With cutout and diamonds 2. Flat top without diamonds 3. Flat top with diamonds

098 Royal Mission Rocker

Shown with leather seat and flattop headrest with no diamonds.

Overall size: 48"H x 31"D x 27½"W

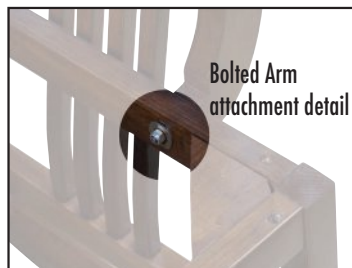
Seat size: 19"D x 21"W

Distance between armrests: 21½"

Floor to top of wood seat: 18"

Floor to top of fabric or leather seat: 19"

- Available in wood, fabric or leather seat



Scooped seat



*Personalize your Rocker or Glider with Custom Engraving!
(Only available on Royal Mission style.)*

Aspen Rockers & Gliders

Available in wood, fabric or leather seat



063 Aspen Glider

Overall size: 46"H x 31"D x 25½"W
Seat size: 18"D x 23"W
Distance between armrests: 20"
Floor to top of wood seat: 17½"
Floor to top of fabric or leather seat:
18½"



065 Aspen Rocker

Shown in ¼ sawn white oak

Overall size: 46"H x 31"D x 25"W
Seat size: 18"D x 20"W
Distance between armrests: 20"
Floor to top of wood seat: 16"
Floor to top of fabric or leather seat: 17"



*Shown with tie-on seat
cushion and hook-on back
cushion*

Rockers

Only available in leather or fabric seat

165 Artisan Mission Rocker

Overall size: 44"H x 31"D x 29"W

Seat size: 18"D x 21"W

Distance between armrests: 20"

Floor to top of seat cushion: 18"

- Features through tenons on armrest



*Only available with
fabric or leather
seat with 3" foam*

*Also available with
smooth arm
(No thru tenon)*

Houston Rocker *(Rough Sawn)*

01 Houston Rocker

Overall size: 44"H x 31"D x 29"W

Seat size: 18"D x 21"W

Distance between armrests: 20"

Floor to top of seat cushion: 18"



*Only available with
fabric or leather seat
with 3" foam*

Available in Wormy Brown Maple

Rockers

Available with Wood, Fabric or Leather Seat

105 Crestline Rocker

Shown in ¼ sawn White Oak

Overall size: 44½" H x 31" D x 28" W

Seat size: 19" D x 21" W

Distance between armrests: 21 ½"

Floor to top of wood seat: 18"

Floor to top of fabric or leather seat:
19"



Shown with leather seat



Scooped Seat Details



Bolted Arm attachment detail

Rockers

Available with Wood, Fabric or Leather Seat

101 Harrisburg Mission Rocker

Shown in Red Oak with fabric seat.

Overall size: 44½"H x 31"D x 28"W

Seat size: 19"D x 21"W

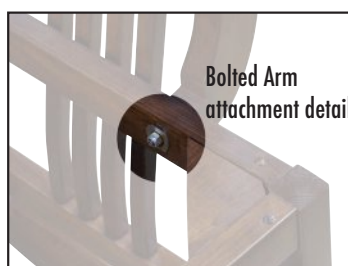
Distance between armrests: 21½"

Floor to top of wood seat: 18"

Floor to top of fabric or leather seat: 19"



Shown with hook-on
back cushion



Bolted Arm
attachment detail



Available in Oak, Cherry, ¼ Sawn White Oak, Brown Maple, Hickory and Elm



Economy Rockers

Available for Quick Ship. For details see pages 46-47

Economy Rockers are all available in wood, fabric, or leather seats.

Economy Rocker Specs

Overall size: 43½"H x 31"D x 28"W

Seat size: 19"D x 21"W

Distance between armrests: 21½"

Floor to top of wood seat: 17¼"

Floor to top of fabric or leather seat: 18¼"

- Dimensions apply to all 5 rockers



111 Crescent Rocker

113 Harrison Rocker



114 Delmont Rocker





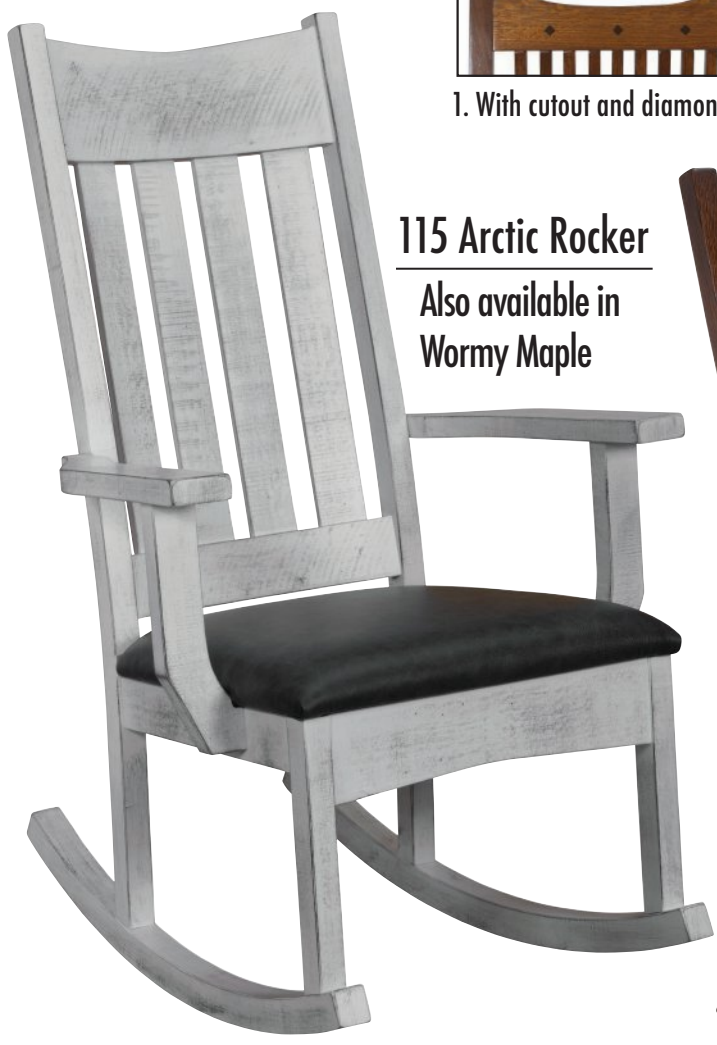
Economy Rockers

Available for Quick Ship. For details see pages 46-47

Economy Rockers are all available in wood, fabric, or leather seats.



1. With cutout and diamonds 2. Flat top without diamonds 3. Flat top with diamonds



115 Arctic Rocker
Also available in
Wormy Maple



The Royal Eco Rocker can be ordered 3 ways at the same price (Please specify when ordering)

116 Royal Eco Rocker



Bolted Arm attachment detail on all

Available in Oak, Cherry, 1/4 Sawn White Oak, Brown Maple, Hickory and Elm

Hiland Series

120 Hiland Legacy Glider

Overall size: 49¾"H x 37"D x 28½"W
Seat size: 19"D x 21"W
Distance between armrests 21½"
Footstool to wood seat: 17"
Footstool to fabric seat: 18"
Footstool: 7"H x 20"W x 7½"D



*Available in
wood, fabric or
leather seat*



Locking Mechanism

The perfect glider for anyone with a bad back or knees! With a little higher seat and optional locking mechanism there is less bending needed when getting in and out. Simply lock, sit and use the footstool and arms to push yourself back in the seat.



Hiland Series



121 Hiland Majestic Glider

Overall size: 49 $\frac{3}{4}$ "H x 37"D x 28 $\frac{1}{2}$ "W
Seat size: 19 $\frac{1}{2}$ "D x 21"W
Distance between armrests 21 $\frac{1}{2}$ "
Footstool to wood seat: 17"
Footstool to fabric seat: 18"
Footstool: 7"H x 20"W x 7 $\frac{1}{2}$ "D

*Available in
wood, fabric or
leather seat*



Hardware Options



Bronze Hardware



Silver Hardware

125 Hiland End Table

Overall size: 30 $\frac{1}{4}$ "H x 16"D x 21 $\frac{1}{2}$ "W
Shelf Size: 14"D x 17"W
Drawer Size: 10"D x 14 $\frac{1}{2}$ "W



Country Chairs Series Grandpa Glider



041 Grandpa Glider

Overall size: 44"H x 29"D x 25½"W

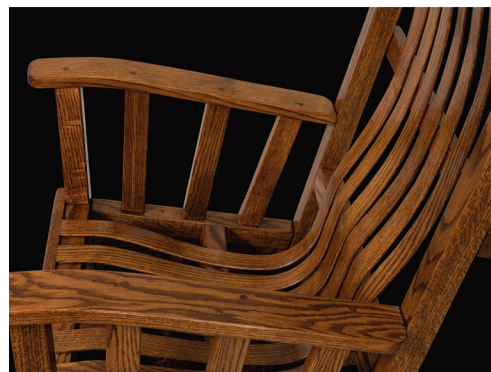
Seat size: 18"D x 20"W

Distance between armrests: 19½"

Floor to top of wood seat: 17"

Floor to top of fabric or leather seat: 18½"

Available in Swivel-
1" Higher



Steam bent slats



049 Ottoman

Overall size without cushion: 12¾H x 19"D x 18"W

Overall size with cushion: 15¾H x 19"D x 18"W

Country Chairs Series Grandpa Rocker

040 Grandpa Rocker

Overall size: 43"H x 36"D x 25½"W

Seat size: 18"D x 20"W

Distance between armrests: 19½"

Floor to top of wood seat: 18"

Floor to top of fabric or leather
seat: 19"



Available in Oak, Cherry, ¼ Sawn White Oak, Brown Maple and Hickory

Country Chairs Series Wave Swivel Glider



142 Wave Swivel Glider

Overall size: 44"H x 29"D x 23½"W

Seat size: 18"D x 20"W

Distance between armrests: 22½"

Floor to top of wood seat: 18"

Floor to top of fabric or leather seat: 19"

(Regular Base is 1" Lower)



Country Chairs Series Ruhe Stuhl Swivel Glider



143 Ruhe Stuhl Swivel Glider

Overall size: 44"H x 29"D x 24"W

Seat size: 18"D x 20"W

Distance between armrests: 19½"

Floor to top of wood seat: 18"

Floor to top of fabric or leather seat: 19"

(Regular Base is 1" Lower)

Available in Oak, Cherry, ¼ Sawn White Oak, Brown Maple and Hickory



Quick Ship Rockers and Gliders

Rocker Size for All

Overall size: 43½"H x 31"D x 28"W
 Seat size: 19"D x 21"W
 Distance between armrests: 21½"
 Floor to top of wood seat: 17¼"
 Floor to top of fabric or leather seat: 18¼"

111 Crescent Rocker

See page 38 for larger photo

Available in ¼ sawn White Oak with fabric or wood seat.



113 Harrison Rocker

See page 38 for larger photo

Available in Brown Maple with fabric or wood seat.



114 Delmont Rocker

See page 38 for larger photo

Available in Red Oak with fabric or wood seat.

We can have your choice of these 6 rockers & gliders shipped to the finish shop within 5 business days, if ordered with one of the fabrics shown below. *For Quick Ship Program* each style is offered in 1 wood species only as shown at right. *Is the fabric you want not listed below?* Order with your choice of fabric and we can still ship it to the finish shop in 10 business days!

Revolution



R1-51 Feeble

Revolution



R1-54 Desert

Solid Fabric



16-81 Linen

Solid Fabric



22-52 Wren

115 Arctic Rocker

See page 39 for larger photo

Available in Wormy Brown Maple (rough sawn) with fabric or wood seat.



116 Royal Eco Rocker

See page 39 for larger photo

Available in 1/4 sawn White Oak with Headrest Option: Flattop without diamonds.



Available in Swivel or Regular Glide and ottoman.

200 Sebana Slat Regular Glider

See page 10 for larger photo Available in Red Oak

Overall size: 43 1/2" H x 32" D x 30" W

Seat size: 20" D x 22" W

Distance between armrests: 20 1/2" W

Floor to top of seat cushion: 18"

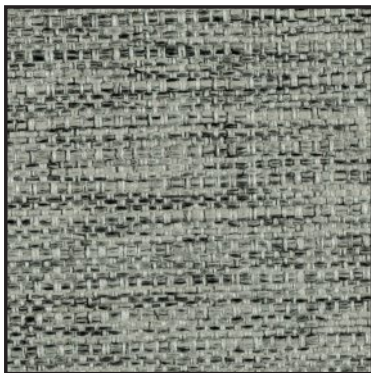
Swivel glider: 1" higher

900 Sebana Slat Ottoman

Overall size:

15" H x 17" D x 19" W

Solid Fabric



C16-3 Fritter

Performance (Crypton)



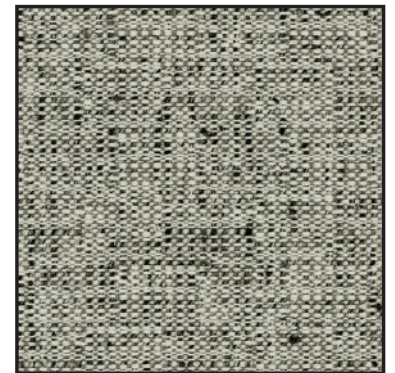
C16-25 Wellington

Performance (Crypton)



C2-37 Yo-Yo

Performance (Crypton)



C8-59 Metal

