

2024

J&R Woodworking

Quality Bedroom Furniture



J&R Woodworking

2024 Quality Bedroom Furniture

Special Promotion

FREE – One Hidden Drawer compartment per each 4 piece Bedroom Set as shown on information page.

To Qualify – Each store is required to display two or more 4 piece Bedroom Sets on their showroom floor.



The Hidden Drawer feature will fit into almost any piece, but for easier access, we recommend putting them into dressers or nightstands.

Notice of Product Changes:

- Look for the **NEW** – Introducing three collections for 2024: **Atlantic**, **Burlington**, and **Simplicity** featuring three styles – Dover, Flint, and Troy
- **NEW** for 2024 – Revised nightstand designed for CPAP machine - see details on page 8
- **NEW** for 2024 – Added a rod & omitted a shelf in 052 and 052-1 Chifferobe (long door)
- **NEW** for 2024 – Due to adding Sturdy Act interlocks, all dressers, chests and armoires are 5/8" deeper
- **NEW** for 2024 – **Quick Ship** added the top-selling 052-1 to all 5 collections



- **Quick Ship** available in 5 styles – Boulder Creek (Rustic Hickory or Oak), Empire (Brown Maple or Oak), Finland (Brown Maple or Oak), Houston (Rustic Rough Sawn Brown Maple), Lexington (Brown Maple)
- **Quick Ship** available with any hardware on our Hardware Board!
- **Quick Ship** available with any of our options, including sidemount, soft-close slides!

STURDY ACT COMPLIANT

"Full" extension drawers are standard on all bedroom groups, except the **NEW Simplicity** collection, which offer 7/8 extension drawers. All pieces (except nightstands) have interlock systems, and minor weight is added to some of the lighter styles.

J&R Woodworking is “better because”

- Unsurpassed selection of pieces and all shown in color
- Easy to use catalog with lots of options
- Lots of pieces to choose from, which means less customizing
- Customizing your own pieces is not a problem
- Solid hardwood tops and sides
- 5/8" thick Wormy Maple drawer boxes have lots of character and rounded top edges
- Soft close hinges standard on all doors
- All tops below eye level (front two corners) will come slightly rounded *N/A on Heritage, Liberty, or Matison collections*
- Quick Ship with lots of options

Note: Furniture dimensions are the overall top sizes. Mirror dimensions are at the base of the mirror. All beds are built by Indian Trail Furniture.

Quality Bedroom Furniture by J&R Woodworking

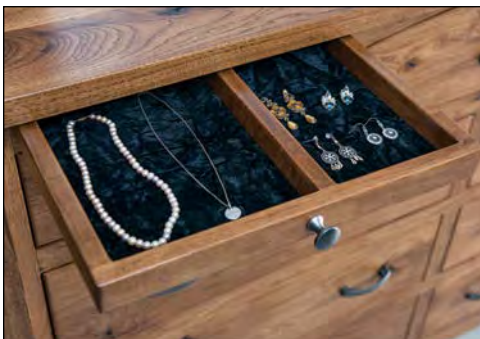
exhibits the natural beauty of oak, cherry, maple, hickory, brown maple and distinctive quarter-sawn white oak the bedroom furniture you select will grace your home for generations to come. Designed and built with integrity, combining traditional methods and modern manufacturing processes we feel confident that you will cherish your selections from our many furniture styles.



Standard full extension slides and 5/8" dovetailed drawer boxes on all styles



Nightstand sliding top security tray (1 3/4" depth)



Jewelry drawer - left 7 9/16"w x 13 7/8"d x 1 1/8"h
Jewelry drawer - right 5 1/2"w x 13 7/8"d x 1 1/8"h



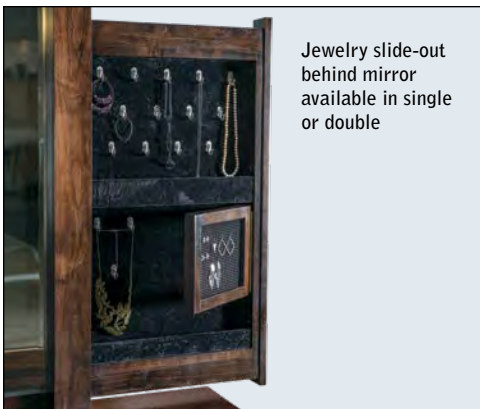
Hidden drawer compartment – a secret place for your valuables 5 7/8"w x 9 7/8"d x 1"h



Pop-out rail secret compartment (1 1/2" depth); N/A on Artesa, Atlantic, Chippewa Sleigh, Heritage, Cascade, Old Classic Sleigh, Sequoyah, or Shaker collections



Optional Blum under-mount concealed slides with soft close (upcharge)



Jewelry slide-out behind mirror available in single or double



Standard soft close hinge on all doors

Appreciating nature's beauty –

Whether your preference is for "refined" oak, cherry, maple, brown maple, hickory, or quarter-sawn white oak, or for "rustic" cherry, hickory or something in between, you'll find just what your looking for.

Rustic Grade Hardwood Furniture Specifications:

- any color grade and defect is allowable
- unlimited cracks allowed
- open knots will not exceed 1" in diameter
- all tops will have major knots filled
- upcharge for filling all knots



J&R Woodworking respectfully reserves the right to make changes at any time to prices, materials, specifications, hardware, colors/finishes, models and to discontinue models without notice or obligation. Color reproductions are as close as photographic and print reproduction will allow. All woods and finishes show some degree of variation due to the natural characteristics of wood.



Artesa



Atlantic



Boulder Creek



Burlington



Carlisle



Chippewa Sleigh



Cottage



Denver



Dumont



Empire



Finland



Flush Mission



Heidi



Heritage



Houston



Imperial



Ironwood



Kascade



Lexington



Liberty



Lincoln



Live Wood



Matison



Monarch



Old Classic Sleigh



Orewood



Reno



Sequoyah



Shaker



Simplicity - Dover



Simplicity – Flint



Simplicity – Troy



Stick Mission



Timbra



Vandella



Vogen



- Available in the 5 styles & wood species listed below
- Available with any hardware on our Hardware Board
- Available with any of our options, including sidemount, soft-close slides
- NEW for 2024 – added top-selling 052-1 Sliding Door Chifferobe



Boulder Creek
(Rustic Hickory or Oak)



Empire
(Brown Maple or Oak)



Finland
(Brown Maple or Oak)



Houston
(Rustic Rough Sawn Brown Maple)



Lexington
(Brown Maple)

CPAP nightstand – REVISED



upper tray for
hose and mask

lower tray for
machine and water

bottom drawer
holds 4 gallons
of water



9¼"

26½"

JRF-018

CPAP nightstand
22w 17d 42½h

NOTE: door will be hinged based
on which side of bed placement

Due to numerous requests to customize our standard nightstands to accommodate a CPAP machine, we designed a NEW standard piece that is functional and user-friendly. We did research directly with CPAP users. Here is a list of their original concerns and what they love about the new J&R Woodworking revised CPAP nightstand.

ORIGINAL CONCERNS:

- Daily time spent setting up & putting away machine
- Seeing a cluttered nightstand during the day
- Top of nightstand full and no room for other things
- Having to bend down twice a day to use machine
- No place to put hoses and water
- Machine is too low and cannot see screen

THINGS TO LOVE ABOUT J&R 018:

- Easy access to on/off switch
- Cabinet hides everything when not in use
- Pull out tray for machine & water
- Pull out tray for hose & mask
- Bottom drawer holds 4 gallons of water
- Machine tray above bed level, so screen is visible
- Holes in back for cord

Artesa

Available in oak, maple, brown maple, cherry, gray elm, hickory, quarter sawn white oak, sap cherry, rustic cherry, rustic hickory, rustic plain sawn white oak, and rustic quarter sawn white oak.



Artesa

ITA-038 Artesa Bed, queen size
shown in Rustic Cherry with CF924 Michael's Cherry stain
headboard is 58" tall; footboard is 32" tall



Standard Features

- 1" solid wood beveled tops and solid side panels
- Full extension drawer slides
- Solid wood tapered corner posts
- Flush drawers and doors
- Solid maple dovetailed drawer boxes
- Soft close door hinges on all doors
- Standard hardware: A-41 & A-42



Options

- NO UPCHARGE for any hardware choices on hardware board, except for A-70 & A-71
- Choose your own hardware (upcharge)
- For nightstand options, see nightstand page of Artesa collection
- Single or double jewelry slide-outs behind mirrors (upcharge)
- Blum under-mount concealed drawer slides with soft close (upcharge)
- Pop-out rail secret compartment NOT AVAILABLE



JRA-030 Bev. Mirror
44w 3d 32¹/₂h

JRA-057 9 Dw. Dresser
62¹/₄w 23d 43³/₄h
Rustic Cherry • Michael's Cherry



JRA-030 Bev. Mirror
44w 3d 32¹/₂h

JRA-058 9 Dw. Dresser
62¹/₄w 23d 43h



JRA-046 Bev. Mirror
47¹/₂w 3d 38¹/₄h

JRA-059 7 Dw. Dresser
62¹/₄w 23d 34³/₄h



JRA-046 Bev. Mirror
47¹/₂w 3d 38¹/₄h

JRA-068 7 Dw. Dresser
69¹/₂w 23d 33¹/₄h



JRA-030 Bev. Mirror
44w 3d 32¹/₂h

JRA-069 9 Dw. Dresser
69¹/₂w 23d 43³/₄h



JRA-046 Bev. Mirror
47¹/₂w 3d 38¹/₄h

JRA-066 10 Dw. Dresser
69¹/₂w 23d 39³/₄h



JRA-030-1
Bev. Mirror
34w 3d 42¹/₂h

JRA-072
7 Dw. Dresser
75¹/₂w 23d 34³/₄h



JRA-047-1
Bev. Mirror
30w 3d 40¹/₄h

JRA-051-1
4 Dw. Dresser
53¹/₄w 23d 37¹/₄h



Jewelry
Slide-out
Behind
Mirror



JRA-073 9 Dw. Dresser
75½w 23d 43h



JRA-047-2 Bev. Mirror
29¾w 3d 33¼h



JRA-031 Bev. Mirror
60w 3d 32½h



JRA-040-2
4 Dw. Media Chest
open media space replaces
top 2 drawers of JRA-040
43½w 23d 53½h

JRA-061 4 Dw. Dresser
47¾w 18½d 30h

JRA-016 Vanity Bench
16w 16d 20h
QSW0 • Driftwood FC-11434



JRA-042 7 Dw. Chest
43w 23d 60h



JRA-035 5 Dw. Chest
35½w 23d 53½h



JRA-040 6 Dw. Chest
43w 23d 53½h



JRA-043 9 Dw. Chest
43w 23d 58½h



JRA-056-3
Bev. Cheval Mirror
27w 18½d 66¼h



JRA-056
Bev. Jewelry Mirror
27w 18½d 66¼h



JRA-055
11 Dw. Double Chest
62¹/₄w 23d 53¹/₂h



JRA-051
His & Hers Chest
7 Dw., 2 Dr., 4 Shelves
53¹/₄w 23d 53¹/₂h



JRA-032-2
4 Dw. Media Chest
43w 18¹/₂d 41¹/₄h



JRA-032
4 Dw. Chest
43w 23d 34³/₄h



JRA-032-1
5 Dw. Chest
43w 23d 41¹/₄h



JRA-062 Gentleman's Chest
6 Dw., 1 Dr., 2 Shelves
43w 23d 56³/₄h



JRA-024
6 Dw. Lingerie Chest
26⁵/₈w 23d 60h



JRA-023
5 Dw. Lingerie Chest
26⁵/₈w 23d 53¹/₂h

nightstand options



water tray (N/A w/ sliding top security tray)



sliding top security tray (1 3/4" depth)



LED touch night light (N/A on 019)



power strip 2 outlets / 2 USB



JRA-019 1 Dw. Nightstand
19 1/2w 18 3/4d 28 3/4h



JRA-052 Chifferobe
4 Dw., 3 Dr., 4 Shelves, 1 Adj. Rod
55 1/4w 24 1/4d 71 3/4h
Dbl. dr. op. 25 3/4w 18 1/2d 28h



JRA-021
3 Dw. Nightstand
25w 18 1/2d 28 3/4h



JRA-022
1 Dw., 1 Dr. Nightstand
25w 18 1/2d 28 3/4h



JRA-029 3 Dw. Nightstand
25w 18 1/2d 32 1/4h



JRA-029-2 2 Dw. Nightstand
25w 18 1/2d 32 1/4h



JRA-052-1
Sliding Door Chifferobe
5 Dw., 2 Dr., 3 Shelves, 1 Adj. Rod
49w 24 1/4d 73h
Ru. Cherry • Michael's Cherry



JRA-044
Blanket Chest w/Cedar Bottom
44w 21 1/4d 25h





JRA-041-3 Armoire
3 Dw., 2 Dr., 2 Shelves
46w 25³/₄d 71³/₄h
Dbl. dr. op. 33¹/₂w 20¹/₂d 33¹/₄h



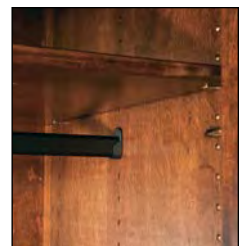
JRA-041 Armoire
2 Dw., 2 Dr., 2 Shelves
46w 25³/₄d 71³/₄h
Dbl. dr. op. 33¹/₂w 20¹/₂d 42h



JRA-039 Chest Armoire
6 Dw., 2 Dr., 1 Shelf
46w 24¹/₄d 71³/₄h
Dbl. dr. op. 33¹/₂w 18¹/₂d 20³/₄h



JRA-050 Wardrobe Armoire
1 Dw., 2 Dr., 1 Adj. Rod & Shelf
50w 25³/₄d 71³/₄h
I.D.: 37¹/₂w 21d 52¹/₂h



all rods are adjustable

Atlantic – NEW

Available in oak, maple, brown maple, cherry, gray elm, hickory, quarter sawn white oak, sap cherry, rustic cherry, rustic hickory and rustic quarter sawn white oak.



ITAS-036 Ashland Bed, queen size
shown in Brown Maple with Sandstone stain
headboard 53" tall; footboard 24" tall



Standard Features

- 3/4" solid wood tops
- 3/4" solid wood side panels
- Full extension drawer slides
- Solid maple dovetailed drawer boxes
- Beveled mirrors
- Soft close door hinges on all doors
- Standard hardware: A-74



ITAL-036 Atlantic Bed
headboard 48" tall
footboard 15½" tall
Brown Maple • Sandstone

Options

- NO UPCHARGE for any hardware choices on hardware board, except for A-70 & A-71
- Choose your own hardware (upcharge)
- For nightstand options, see nightstand page of Atlantic collection
- Pop-out rail secret compartment NOT AVAILABLE
- Single or double jewelry slide-outs behind mirrors (upcharge)
- Blum under-mount concealed drawer slides with soft close (upcharge)

JRAL-030
Beveled Mirror
41w 2d 31¾h

JRAL-057
9 Dw. Dresser
59w 22½d 46¾h
Br. Maple • Sandstone



JRAL-046
Beveled Mirror
44½w 2d 37¾h

JRAL-059
7 Dw. Dresser
59w 22½d 37h
Br. Maple • Sandstone



JRAL-052-1

Sliding Door Chifferobe
5 Dw., 2 Dr., 3 Shelves, 1 Adj. Rod
44w 22½d 73½h
Br. Maple • Sandstone



JRAL-040 6 Dw. Chest
40w 22½d 57¾h
Br. Maple • Sandstone



JRAL-035 5 Dw. Chest
32½w 22½d 57¾h
Br. Maple • Sandstone



JRAL-021
3 Dr. Nightstand
21½w 17¼d 32¾h
Br. Maple • Sandstone



JRAL-027
3 Dr. Nightstand
26½w 17¼d 32¾h
Br. Maple • Sandstone

nightstand options



water tray (N/A w/
sliding top security tray)



sliding top security
tray (1¾" depth)



LED touch night
light (N/A on 019)



power strip
2 outlets / 2 USB

Boulder Creek

Available in oak, maple, brown maple, cherry, gray elm, hickory, quarter sawn white oak, sap cherry, rustic cherry, rustic hickory, rustic plain sawn white oak, and rustic quarter sawn white oak.



ITBC-057 Boulder Creek Bed, queen size shown in Rustic Hickory with FC809 - Golden Harvest stain
headboard 59" tall; footboard 31" tall



Standard Features

- 1" solid wood tops and solid wood bowed side panels
- Full extension drawer slides
- Beveled mirror
- Solid wood corner posts
- Black inlay strip below drawers
- Solid maple dovetailed drawer boxes
- Soft close door hinges on all doors
- Standard hardware: A-52 1" black round knob



Options

- NO UPCHARGE for any hardware choices on hardware board, except for A-70 & A-71
- Choose your own hardware (upcharge)
- For nightstand options, see nightstand page of Boulder Creek collection
- Pop-out rail secret compartment (upcharge)
- Single or double jewelry slide-outs behind mirrors (upcharge)
- Blum under-mount concealed drawer slides with soft close (upcharge)



Rustic Hickory or Oak

Boulder Creek

Boulder Creek



JRBC-045
 Bev. Mirror
 50³/₄w 1¹/₂d 34¹/₄h
JRBC-074
 9 Dw. Dresser
 73w 22¹/₂d 44¹/₄h
 Ru. Hickory •
 Golden Harvest



JRBC-031
 Bev. Mirror
 58³/₄w 1¹/₂d 34¹/₄h
JRBC-073
 9 Dw. Dresser
 73w 22¹/₂d 43¹/₄h



JRBC-030 Bev. Mirror
 42³/₄w 1¹/₂d 34¹/₄h
JRBC-067-1 9 Dw. Dresser
 w/2 Jewelry Dw.
 67w 22¹/₂d 43¹/₄h



JRBC-030 Bev. Mirror
 42³/₄w 1¹/₂d 34¹/₄h
JRBC-069 9 Dw. Dresser
 67w 22¹/₂d 44¹/₄h
 Ru. Hickory • Golden Harvest



JRBC-068
 7 Dw. Dresser
 67w 22¹/₂d 36³/₄h



JRBC-072
 7 Dw. Dresser
 73w 22¹/₂d 34¹/₄h



JRBC-045
Bev. Mirror
50³/₄w 1¹/₂d 34¹/₄h

JRBC-063
6 Dw. Dresser
67w 22¹/₂d 40¹/₄h
Ru. QSWO •
Asbury, burnished



JRBC-031
Bev. Mirror
58³/₄w 1¹/₂d 34¹/₄h

JRBC-066
10 Dw. Dresser
67w 22¹/₂d 40¹/₄h



JRBC-048
Bev. Mirror
42³/₄w 1¹/₂d 42¹/₄h

JRBC-067
7 Dw. Dresser
w/2 Jewelry Dw.
67w 22¹/₂d 34¹/₄h

JRBC-030
Bev. Mirror
42³/₄w 1¹/₂d 34¹/₄h

JRBC-057
9 Dw. Dresser
60w 22¹/₂d 44¹/₄h
Ru. Hickory •
Golden Harvest



**BEST
SELLER**



JRBC-059-1-4
6 Dw. Dresser
60w 18d 34¹/₄h
Ru. Hickory • Golden Harvest

Jewelry
Slide-out
Behind
Mirror



Jewelry Drawer

Boulder Creek



JRBC-030
Bev. Mirror
42³/₄w 1¹/₂d 34¹/₄h

JRBC-057-1
6 Dw. Dresser
60w 22¹/₂d 44¹/₄h
Ru. Hickory • Golden Harvest



JRBC-030
Bev. Mirror
42³/₄w 1¹/₂d 34¹/₄h

JRBC-058
9 Dw. Dresser
60w 22¹/₂d 43¹/₄h

JRBC-048
Bev. Mirror
42³/₄w 1¹/₂d 42¹/₄h

JRBC-059
7 Dw. Dresser
60w 22¹/₂d 34¹/₄h



JRBC-047-1
Bev. Mirror
28¹/₂w 1¹/₂d 42¹/₄h

JRBC-051-1
4 Dw. Dresser
51w 22¹/₂d 36³/₄h



JRBC-047-2 Bev. Mirror
28¹/₂w 1¹/₂d 35¹/₂h

JRBC-051-3-4 6 Dw. Dresser
51w 18d 36³/₄h
Ru. Cherry • Burnt Umber



JRBC-047-2
Bev. Mirror
28¹/₂w 1¹/₂d 35¹/₂h

JRBC-061
4 Dw. Vanity Dresser
46¹/₂w 18d 30h

JRBC-016
Vanity Bench
16w 16d 20h
Ru. Hickory • Tavern



JRBC-055
 11 Dw. Double Chest
 60w 22½d 54¾h



JRBC-051
 His & Hers Chest
 7 Dw., 2 Dr., 4 Shelves
 51w 22½d 54¾h
 Ru. QSWO • Asbury, burnished



optional pop-out rail
 secret compartment
 (1½" depth)



JRBC-062-1 Door Chest
 2 Dw., 2 Dr., 2 Shelves
 41w 22½d 54¾h
 Dbl. dr. op. 32½zw 19d 23⅝h
 Ru. Hickory • Golden Harvest



JRBC-042
 7 Dw. Chest
 41w 22½d 58h

Boulder Creek



JRBC-037 7 Dw. Chest-on-Chest
39w 22½d 57¾h



JRBC-043 9 Dw. Chest
41w 22½d 56¾h



JRBC-040 6 Dw. Chest
41w 22½d 54¾h
Ru. Hickory • Golden Harvest



JRBC-062 Gentleman's Chest
6 Dw., 1 Dr., 2 Shelves
41w 22½d 54¾h



JRBC-040-2
4 Dw. Media Chest
41w 22½d 54¾h



JRBC-038 Bev. Mirror
35¾w 1½d 19¾h



JRBC-036 4 Dw. Chest
41w 22½d 51h
Ru. Hickory • Golden Harvest



JRBC-035
5 Dw. Chest
33¾w 22½d 54¾h



optional pop-out rail
secret compartment
(1½" depth)



JRBC-032-1
5 Dw. Chest
41w 22½d 41½h



JRBC-032
4 Dw. Chest
41w 22½d 34¾h



JRBC-024
6 Dw. Lingerie Chest
24½w 22½d 58h



JRBC-023
5 Dw. Lingerie Chest
24½w 22½d 50¾h



JRBC-040-4 6 Dw. Chest
41w 18d 54¾h
Br. Maple • Rich Tobacco



JRBC-032-2 4 Dw. Media Chest
41w 18d 41½h
Ru. Hickory • Golden Harvest



JRBC-035-1-4 4 Dw. Chest
33¾w 18d 43¾h
Ru. Cherry • Burnt Umber



JRBC-023-1-4 4 Dw. Chest
24½w 18d 43¾h
Ru. Hickory • Golden Harvest

Boulder Creek

nightstand options



water tray (N/A w/
sliding top security tray)



sliding top security
tray (1 3/4" depth)



LED touch night
light (N/A on **019**)



power strip
2 outlets / 2 USB



JRBC-027-3
3 Dw. Nightstand
30w 18d 34 1/2h
Ru. Hickory • Golden Harvest



JRBC-028-3
1 Dw., 2 Dr. Nightstand
30w 18d 34 1/2h
Ru. Hickory • Golden Harvest



JRBC-019-3
1 Dw. Nightstand
30w 19 3/4d 34 1/2h
Ru. QSWO • Asbury, burnished



JRBC-029-2
2 Dw. Nightstand
27 1/2w 18d 33h



JRBC-029
3 Dw. Nightstand
27 1/2w 18d 33h



JRBC-027
3 Dw. Nightstand
27 1/2w 18d 29 3/4h
shown w/opt. water tray



JRBC-028
1 Dw., 2 Dr. Nightstand
27 1/2w 18d 29 3/4h



JRBC-025
3 Dw. Nightstand
27 1/2w 18d 26h



JRBC-026
1 Dw., 2 Dr. Nightstand
27 1/2w 18d 26h



JRBC-019
1 Dw. Nightstand
22³/₄w 19³/₄d 29³/₄h



JRBC-021
3 Dw. Nightstand
22³/₄w 18d 29³/₄h

**BEST
SELLER**



available with
optional
sliding top



JRBC-022
1 Dw., 1 Dr. Nightstand
22³/₄w 18d 29³/₄h



JRBC-019-4
1 Dw. Nightstand
18¹/₄w 17¹/₂d 29³/₄h
Ru. Cherry • Burnt Umber



JRBC-021-4
3 Dw. Nightstand
18¹/₄w 16d 29³/₄h
Ru. Hickory • Golden Harvest



JRBC-056
Bev. Jewelry Mirror
26w 17¹/₄d 66¹/₄h



JRBC-022-4
1 Dw., 1 Dr. Nightstand
18¹/₄w 16d 29³/₄h
Ru. Hickory • Golden Harvest



NEW

JRBC-018
C-PAP Nightstand
24¹/₂w 18d 42³/₄h
Ru. Hickory • Almond
more info on page 8



JRBC-056-3
Bev. Cheval Mirror
26w 17¹/₄d 66¹/₄h

Boulder Creek



JRBC-044-1
 Blanket Chest w/Cedar Bottom
 50w 22½d 26h
 Br. Maple • Rich Tobacco



JRBC-044-4
 Blanket Chest w/Cedar Bottom
 36w 18d 19h
 Ru. Cherry • Burnt Umber



JRBC-044
 Blanket Chest w/Cedar Bottom
 44w 22½d 22h



JRBC-052 Chifferobe
 4 Dw., 3 Dr., 4 Shelves, 1 Adj. Rod
 53w 23½d 71h
 Dbl. dr. op. 24¾w 19d 26h



JRBC-052-1
 Sliding Door Chifferobe
 5 Dw., 2 Dr., 3 Shelves, 1 Adj. Rod
 47w 23½d 71h





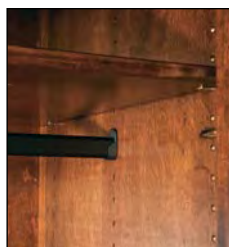
JRBC-041-3 Armoire
 3 Dw., 2 Dr., 2 Shelves
 43w 25d 71h
 Dbl. dr. op. 32½w 21d 33¾h



JRBC-041 Armoire
 2 Dw., 2 Dr., 2 Shelves
 43w 25d 71h
 Dbl. dr. op. 32½w 21d 41½h



JRBC-050 Wardrobe Armoire
 1 Dw., 2 Dr., 1 Adj. Rod & Shelf
 47w 25d 71h
 I.D.: 36½w 21d 54h



all rods are adjustable



JRBC-039 Chest Armoire
 6 Dw., 2 Dr., 1 Shelf
 43w 23½d 71h
 Dbl. dr. op. 32½w 19d 18¾h
Ru. Hickory • Golden Harvest

Boulder Creek



JRBC-050-1 Wardrobe Armoire
 2 Dw., 4 Dr., 2 Adj. Rods, 2 Shelves
 69w 25d 71h
 Dbl. dr. op. 28³/₂w 21d 52h
 Ru. Hickory • Golden Harvest



all rods are adjustable



JRBC-053 2 Piece Mule Chest
 9 Dw., 4 Dr., 6 Shelves
 69w 23¹/₂d 77¹/₄h
 Dbl. dr. op. 27³/₄w 19¹/₄d 31¹/₂h



JRBC-054 Deluxe (2 Piece) Mule Chest
 8 Dw., 4 Dr., 6 Shelves
 77w 25d 77h
 Dbl. dr. op. 31¹/₄w 23d 36¹/₂h



JRBC-054 Deluxe (2 Piece) Mule Chest
 8 Dw., 4 Dr., 6 Shelves
 77w 25d 77h
 Dbl. dr. op. 31¹/₄w 23d 36¹/₂h
 shown w/opt. glass doors
 Ru. QSWO • Asbury, burnished

Burlington – NEW

Available in oak, maple, brown maple, cherry, gray elm, hickory, quarter sawn white oak, sap cherry, rustic cherry, rustic hickory, rustic plain sawn white oak, rustic quarter sawn white oak, and rustic rough sawn brown maple.



ITBT-049 Burlington Bed, king size shown in Rustic Rough Sawn Brown Maple with Sandstone stain, #10 sheen headboard 76" tall, footboard 24½" tall



ITBT-049 Burlington Bed
Rustic Rough Sawn Brown Maple with Sandstone stain, #10 sheen and C2-12 Antarctic Fabric

Standard Features

- 1¾" solid wood tops
- ¾" solid wood side panels
- Full extension drawer slides
- Solid maple dovetailed drawer boxes
- Beveled mirrors
- Soft close door hinges on all doors
- Standard hardware: A-72



Options

- NO UPCHARGE for any hardware choices on hardware board, except for A-70 & A-71
- Choose your own hardware (upcharge)
- For nightstand options, see nightstand page of Burlington collection
- Pop-out rail secret compartment (upcharge)
- Single or double jewelry slide-outs behind mirrors (upcharge)
- Blum under-mount concealed drawer slides with soft close (upcharge)



JRBT-030 Beveled Mirror
44 $\frac{1}{2}$ w 2 $\frac{1}{2}$ d 34h

JRBT-057 9 Dw. Dresser
60 $\frac{1}{2}$ w 22 $\frac{1}{2}$ d 45 $\frac{1}{4}$ h
Ru. Rough Sawn Br. Maple • Sandstone



JRBT-046 Beveled Mirror
48w 2 $\frac{1}{2}$ d 42 $\frac{3}{4}$ h

JRBT-059 7 Dw. Dresser
60 $\frac{1}{2}$ w 22 $\frac{1}{2}$ d 35 $\frac{1}{2}$ h
Ru. Hickory • Almond



JRBT-045 Beveled Mirror
52 $\frac{1}{2}$ w 2 $\frac{1}{2}$ d 37h

JRBT-063 6 Dw. Dresser
67 $\frac{1}{2}$ w 22 $\frac{1}{2}$ d 41 $\frac{1}{2}$ h
Oak • Charwood



JRBT-052-1
Sliding Door Chifferobe
5 Dw., 2 Dr., 3 Shelves, 1 Adj. Rod
45 $\frac{1}{2}$ w 22 $\frac{1}{2}$ d 72h



JRBT-036 4 Dw. Chest
41 $\frac{1}{2}$ w 22 $\frac{1}{2}$ d 52 $\frac{1}{2}$ h
Oak • Charwood



JRBT-040 6 Dw. Chest
41 $\frac{1}{2}$ w 22 $\frac{1}{2}$ d 55 $\frac{3}{4}$ h
Ru. Rough Sawn
Br. Maple • Sandstone



JRBT-035 5 Dw. Chest
34w 22 $\frac{1}{2}$ d 55 $\frac{3}{4}$ h
Ru. Hickory • Almond

nightstand options



optional pop-out rail
secret compartment
(1 $\frac{1}{2}$ " depth)



water tray (N/A w/
sliding top security tray)



LED touch night
light (N/A on 019)



power strip
2 outlets / 2 USB



sliding top security
tray (1 $\frac{3}{4}$ " depth)



JRBT-029-3
3 Dr. Nightstand
30w 17 $\frac{3}{4}$ d 34h
Oak • Charwood



JRBT-022
1 Dw., 1 Dr.
Nightstand
23 $\frac{1}{2}$ w 17 $\frac{3}{4}$ d 31h
Ru. Hickory • Almond



JRBT-021
3 Dr. Nightstand
23 $\frac{1}{2}$ w 17 $\frac{3}{4}$ d 31h
Ru. Hickory • Almond



JRBT-019
1 Dr. Nightstand
23 $\frac{1}{2}$ w 20d 31h
Ru. Rough Sawn
Br. Maple • Sandstone

Carlisle

Available in oak, maple, brown maple, cherry, gray elm, hickory, quarter sawn white oak, sap cherry, rustic cherry, rustic hickory, rustic plain sawn white oak, and rustic quarter sawn white oak.

Carlisle



ITTM-035 Trimble Bed, queen size
shown in Oak with Earthtone stain
headboard 52" tall, footboard 20" tall



Standard Features

- 1" solid wood tops with rounded edge and corners
- Full extension drawer slides
- 3/4" solid wood sides with splayed legs
- Slightly raised flush drawer fronts
- High arched doors and base
- Beveled mirrors
- Solid maple dovetailed drawer boxes
- Soft close door hinges on all doors
- Standard hardware: A-55 1 1/2" round wood knobs



Options

- NO UPCHARGE for any hardware choices on hardware board, except for A-70 & A-71
- Choose your own hardware (upcharge)
- For nightstand options, see nightstand page of Carlisle collection
- Pop-out rail secret compartment (upcharge)
- Single or double jewelry slide-outs behind mirrors (upcharge)
- Blum under-mount concealed drawer slides with soft close (upcharge)



ITC-078 Carlisle Bed
headboard 53" tall
footboard 26" tall
Oak • Carbon

Carlisle

Carlisle



JRC-030 Bev. Crown Mirror
43½w 36¾h

JRC-066 10 Dw. Dresser
66w 22d 42¾h



JRC-048 Bev. Crown Mirror
43½w 45¾h

JRC-059 7 Dw. Dresser
59w 22d 36¾h



JRC-031 Bev. Crown Mirror
59½w 37¾h

JRC-073 9 Dw. Dresser
72w 22d 45½h



JRC-048 Bev. Crown Mirror
43½w 45¾h

JRC-072 7 Dw. Dresser
72w 22d 36¾h



JRC-031 Bev. Crown Mirror
59½w 37¾h

JRC-069 9 Dw. Mule Dresser
66w 22d 46½h



JRC-048 Bev. Crown Mirror
43½w 45¾h

JRC-068 7 Dw. Dresser
66w 22d 35½h



JRC-048
Bev. Crown Mirror
43½w 45¾h

JRC-067
7 Dw. Dresser
w/ 2 Jewelry Dw.
66w 22d 36¾h



Jewelry
Slide-out
Behind
Mirror



Jewelry Drawer



JRC-030
Bev. Crown Mirror
43½w 37¾h

JRC-057
9 Dw. Dresser
59w 22d 46½h
Oak • Earthtone





JRC-030 Bev. Crown Mirror
43½w 37¾h

JRC-058 9 Dw. Mule Dresser
59w 22d 45½h



JRC-049-1 Bev. Mirror
29¾w 2¼d 39h

JRC-061 4 Dw. Vanity Dresser
45w 17¾d 32¾h

JRC-016 Vanity Bench
16w 16d 20h
Ru. Cherry • Michael's Cherry



JRC-049-1 Bev. Mirror
29¾w 2¼d 39h

JRC-051-1 4 Dw. Dresser
50w 22d 39¾h



JRC-067-1 9 Dw. Dresser w/2 Jewelry Dw.
66w 22d 45½h



JRC-038 Beveled Mirror
36½w 22¼h



optional pop-out rail
secret compartment
(1½" depth)



JRC-051 His & Hers Chest
7 Dw., 2 Dr., 4 Shelves
50w 22d 57¾h



JRC-035 5 Dw. Chest
32½w 22d 57¾h



JRC-040 6 Dw. Chest
40w 22d 57¾h



JRC-042 7 Dw. Chest
40w 22d 60¾h

Carlisle



JRC-037
7 Dw. Chest-on-Chest
37½w 22d 60¼h



JRC-043
9 Dw. Chest
40w 22d 59½h



JRC-040-2
4 Dw. Media Chest
40w 22d 57¼h



optional pop-out rail
secret compartment
(1½" depth)



JRC-023 5 Dw. Lingerie Chest
23½w 22d 53¼h



JRC-024 6 Dw. Lingerie Chest
23½w 22d 60¾h



JRC-055 11 Dw. Double Chest
59w 22d 57¼h



JRC-032-2
4 Dw. Media Chest
40w 17¹/₄d 44h



JRC-032-1
5 Dw. Chest
40w 22d 44h



JRC-032
4 Dw. Chest
40w 22d 36³/₄h



JRC-056
Bev. Jewelry Mirror
25³/₄w 17d 66¹/₂h



JRC-044
Blanket Chest w/Cedar Bottom
44w 22d 22¹/₂h



JRC-036
4 Dw. Chest
40w 22d 53³/₄h
Oak • Earthtone



JRC-056-3
Bev. Cheval Mirror
25³/₄w 17d 66¹/₂h



JRC-062
Gentleman's Chest
6 Dw., 1 Dr., 2 Shelves
40w 22d 57¹/₄h

Carlisle

nightstand options



water tray (N/A w/
sliding top security tray)



sliding top security
tray (1¾" depth)



LED touch night
light (N/A on 019)



power strip
2 outlets / 2 USB



JRC-019 1 Dw. Nightstand
21½w 18¾d 32h



**BEST
SELLER**

JRC-021 3 Dw. Nightstand
21½w 17¾d 32h
Oak • Earthtone



JRC-022 1 Dw., 1 Dr. Nightstand
21½w 17¾d 32h



JRC-025
3 Dw. Nightstand
26w 17¾d 28¾h



JRC-026
1 Dw., 2 Dr. Nightstand
26w 17¾d 28¾h



JRC-027
3 Dw. Nightstand
26w 17¾d 32h



JRC-028
1 Dw., 2 Dr. Nightstand
26w 17¾d 32h



JRC-029
3 Dw. Nightstand
26w 17¾d 36¾h



JRC-029-2
2 Dw. Nightstand
26w 17¾d 36¾h



JRC-039 Chest Armoire
 6 Dw., 2 Dr., 1 Shelf
 43 $\frac{1}{2}$ w 23 $\frac{3}{4}$ d 74 $\frac{3}{4}$ h
 Dbl. dr. op. 32 $\frac{1}{2}$ w 18 $\frac{1}{2}$ d 18 $\frac{3}{4}$ h



JRC-052-1 Sliding Door Chifferobe
 5 Dw., 2 Dr., 3 Shelves, 1 Adj. Rod
 47 $\frac{1}{2}$ w 23 $\frac{3}{4}$ d 74 $\frac{3}{4}$ h
 Ru. QSW0 • Dark Knight



JRC-041-3 Armoire
 3 Dw., 2 Dr., 2 Shelves
 43 $\frac{1}{2}$ w 25d 74 $\frac{3}{4}$ h
 Dbl. dr. op. 32 $\frac{1}{2}$ w 20 $\frac{1}{2}$ d 33 $\frac{1}{4}$ h



JRC-041 Armoire
 2 Dw., 2 Dr., 2 Shelves
 43 $\frac{1}{2}$ w 25d 74 $\frac{3}{4}$ h
 Dbl. dr. op. 32 $\frac{1}{2}$ w 20 $\frac{1}{2}$ d 41 $\frac{1}{2}$ h

Carlisle



JRC-052 Chifferobe
4 Dw., 3 Dr., 4 Shelves, 1 Adj. Rod
53½w 23¾d 74¾h
Dbl. dr. op. 24¾w 18½d 26h



JRC-050 Wardrobe Armoire
1 Dw., 2 Dr., 1 Adj. Rod & Shelf
47½w 25¼d 74¾h
I.D.: 38½w 20½d 56h



all rods are adjustable



JRC-053
Mule Chest (2 piece)
9 Dw., 4 Dr., 6 Shelves
69½w 23¾d 80¾h
Dbl. dr. op. 27¾w 18½d 31½h



JRC-054
Deluxe Mule Chest (2 piece)
8 Dw., 4 Dr., 6 Shelves
77¾w 25¼d 80¾h
Dbl. dr. op. 31¾w 20½d 36½h

Chippewa Sleigh

Available in oak, maple, brown maple, cherry, gray elm, hickory, quarter sawn white oak, sap cherry, rustic cherry, rustic hickory, rustic plain sawn white oak, and rustic quarter sawn white oak.



Chippewa Sleigh

ITCS-026 Chippewa Sleigh Bed, queen size
shown in Oak with Vintage Antique stain
headboard 52" tall, footboard 25" tall



Standard Features

- 1" solid wood tops and side panels
- Full extension drawer slides
- All doors and drawers are flush
- Rounded top drawer fronts
- Solid maple dovetailed drawer boxes
- Beveled mirrors
- Soft close door hinges on all doors
- Standard hardware: A-53 1 3/4" wood knob and A-54 1 1/8" wood knob



Options

- NO UPCHARGE for any hardware choices on hardware board, except for A-70 & A-71
- Choose your own hardware (upcharge)
- For nightstand options, see nightstand page of Chippewa Sleigh collection
- Blum under-mount concealed drawer slides with soft close (upcharge)
- Jewelry slide-outs behind swinging mirrors NOT AVAILABLE
- Pop-out rail secret compartment NOT AVAILABLE

Chippewa Sleigh



JRO-030 Bev. Mirror
41w 37h

JRCS-058 9 Dw. Dresser
58w 21½d 42h



JRCS-048-3
Bev. Mirror w/3 Dw.
39w 8d 38h

JRCS-069 9 Dw. Dresser
65w 21½d 42h



JRCS-030-2
Bev. Mirror w/2 Dw.
31¼w 8d 38¾h

JRCS-051-1 4 Dw. Dresser
49w 21½d 33¾h



JRO-038 Bev. Mirror
38½w 20h

JRCS-051 His & Hers Chest
10 Dw., 2 Dr., 4 Shelves
49w 21½d 53½h



JRO-030-3 Mirror w/3 Dw.
38w 8d 38¾h

JRCS-059 7 Dw. Dresser
58w 21½d 33¾h



JRO-030-1 Bev. Mirror
34w 2½d 36¾h

JRCS-061 4 Dw. Vanity Dresser
44w 17¼d 30h

JRCS-016 Vanity Bench
16w 16d 20h
Ru. QSWO • Asbury



JRCS-055
11 Dw. Double Chest
58w 21½d 53½h



JRCS-068 7 Dw. Dresser
65w 21½d 33¾h



JRCS-042 7 Dw. Chest
41¹/₄w 21¹/₂d 53¹/₂h



JRCS-023 5 Dw. Lingerie Chest
22¹/₄w 21¹/₂d 53¹/₂h



JRCS-024 6 Dw. Lingerie Chest
22¹/₄w 21¹/₂d 53¹/₂h



JRCS-040 6 Dw. Chest
37³/₄w 21¹/₂d 53¹/₂h



JRCS-035 5 Dw. Chest
31¹/₄w 21¹/₂d 53¹/₂h



JRCS-062 Gentleman's Chest
7 Dw., 1 Dr., 2 Shelves
41¹/₄w 21¹/₂d 53¹/₂h



JRCS-032-2 3 Dw. Media Chest
41¹/₄w 17¹/₂d 42h



JRCS-032 5 Dw. Chest
41¹/₄w 21¹/₂d 33³/₄h



JRCS-032-1 6 Dw. Chest
41¹/₄w 21¹/₂d 42h

Chippewa Sleigh



JRCS-044
Blanket Chest w/Cedar Bottom
48³/₄w 21³/₄d 26¹/₄h

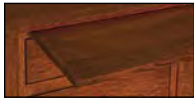


JRCS-056
Bev. Jewelry Mirror
26w 22d 61h



JRCS-056-3
Bev. Cheval Mirror
26w 22d 61h

nightstand options



water tray (N/A w/
sliding top security tray)



sliding top security
tray (1³/₄" depth)



LED touch night
light (N/A on **019**)



power strip
2 outlets / 2 USB



JRCS-028
1 Dw., 2 Dr. Nightstand
25¹/₄w 17¹/₂d 29³/₄h



JRCS-021
3 Dw. Nightstand
20¹/₂w 17¹/₂d 29³/₄h



JRCS-022
1 Dw., 1 Dr. Nightstand
20¹/₂w 17¹/₂d 29³/₄h



JRCS-019
1 Dw. Nightstand
20¹/₂w 18d 29³/₄h



JRCS-027
3 Dw. Nightstand
25¹/₄w 17¹/₂d 29³/₄h



JRCS-029-2
2 Dw. Nightstand
25¹/₄w 17¹/₂d 33³/₄h



JRCS-029
3 Dw. Nightstand
25¹/₄w 17¹/₂d 33³/₄h



JRCS-052-1
 Sliding Door Chifferobe
 5 Dw., 2 Dr., 3 Shelves, 1 Adj. Rod
 42w 21½d 76¾h
 QSW0 • Michael's Cherry



JRCS-052 Chifferobe
 4 Dw., 3 Dr., 4 Shelves, 1 Adj. Rod
 48w 21½d 73¼h
 Dbl. dr. op. 25¾w 16½d 26h

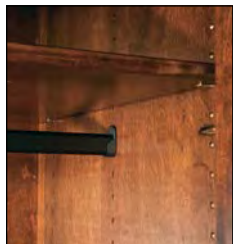


JRCS-041-3 Armoire (2 piece)
 5 Dw., 2 Dr., 2 Shelves
 37¾w 23¾d 78¼h
 Dbl. dr. op. 30½w 20d 27½h



JRCS-041 Armoire (2 Piece)
 4 Dw., 2 Dr., 2 Shelves
 41¾w 23¾d 79½h
 Dbl. dr. op. 34w 19¾d 37½h

Chippewa Sleigh



all rods are adjustable



JRCS-050 Wardrobe Armoire
2 Dr., 2 Shelves, 1 Adj. Rod
43w 22³/₄d 73¹/₄h
I.D.: 38¹/₂w 19d 64h



JRCS-039 Chest Armoire (2 piece)
5 Dw., 2 Dr., 1 Shelf
37³/₄w 22¹/₂d 70¹/₄h
Dbl. dr. op. 30¹/₂w 17³/₄d 19¹/₂h



JRCS-054 Deluxe Mule Chest (2 piece)
10 Dw., 4 Dr., 6 Shelves
73w 23³/₄d 79¹/₂h
Dbl. dr. op. 32w 19³/₄d 37h



JRCS-053 Mule Chest (2 piece)
9 Dw., 4 Dr., 6 Shelves
65w 22¹/₂d 78¹/₄h
Dbl. dr. op. 29w 17³/₄d 27³/₄h

Cottage

Available in oak, maple, brown maple, cherry, gray elm, hickory, quarter sawn white oak, sap cherry, rustic cherry, rustic hickory and rustic quarter sawn white oak.



ITCT-027 Cottage Bed, king size
shown in Oak with Old Museum stain
bed posts are 6" x 6"; headboard 76" tall, footboard 29" tall



Standard Features

- 1³/₄" solid wood tops
- 3" square posts
- Full extension drawer slides
- Beveled mirror
- Solid wood corner posts
- Solid maple dovetailed drawer boxes
- Soft close door hinges on all doors
- Standard hardware: A-20, A-50



Options

- NO UPCHARGE for any hardware choices on hardware board, except for A-70 & A-71
- Choose your own hardware (upcharge)
- For nightstand options, see nightstand page of Cottage collection
- Pop-out rail secret compartment (upcharge)
- Single or double jewelry slide-outs behind mirrors (upcharge)
- Blum under-mount concealed drawer slides with soft close (upcharge)

JRCT-030
Mirror
42½w 32¼h

JRCT-057
9 Dw. Dresser
61w 21¾d 43¾h
Oak • Old Museum



JRCT-046
Mirror
46w 38h

JRCT-059
7 Dw. Dresser
61w 21¾d 33¾h
Br. Maple • Old Museum



JRCT-040
6 Dw. Chest
42w 21¾d 54¾h
Oak • Old Museum



JRCT-035
4 Dw. Chest
34½w 21¾d 54¾h
Br. Maple • Old Museum



optional pop-out rail
secret compartment
(1½" depth)

nightstand options



water tray (N/A w/
sliding top security tray)



sliding top security
tray (1¾" depth)



LED touch night
light (N/A on 019)



power strip
2 outlets / 2 USB

JRCT-022
1 Dw.,
1 Dr. Nightstand
23½w 17d 28½h
Br. Maple •
Old Museum



JRCT-029-2
2 Dw. Nightstand
23½w 17d 31½h
Oak • Old Museum

Denver

Available in oak, maple, brown maple, cherry, gray elm, hickory, quarter sawn white oak, sap cherry, rustic cherry, rustic hickory, rustic plain sawn white oak, and rustic quarter sawn white oak.



ITDV-087 Denver Bed, queen size
shown in Rustic Hickory with Earthtone stain
headboard 60" tall, footboard 16" tall



Standard Features

- 1" solid wood tops
- 3/4" solid side panels
- Full extension drawer slides
- Solid maple dovetailed drawer boxes
- Beveled mirrors
- Soft close door hinges on all doors
- Standard hardware: A-48



Options

- **NO UPCHARGE** for any hardware choices on hardware board, except for A-70 & A-71
- Choose your own hardware (upcharge)
- For nightstand options, see nightstand page of Denver collection
- Pop-out rail secret compartment (upcharge)
- Single or double jewelry slide-outs behind mirrors (upcharge)
- Blum under-mount concealed drawer slides with soft close (upcharge)

Denver



JRDV-046 Bev. Mirror
47³/₄w 2³/₄d 39¹/₄h

JRDV-059-1 6 Dw. Dresser
59w 21³/₄d 32¹/₄h
Ru. Cherry • Burnt Umber



JRDV-030 Bev. Mirror
44¹/₄w 2³/₄d 33³/₄h

JRDV-057 9 Dw. Dresser
59w 21³/₄d 42h
Ru. Rough Sawn Br. Maple • Almond



JRDV-047-1 Bev. Mirror
30w 2³/₄d 41¹/₄h

JRDV-051-1 4 Dw. Dresser
50w 21³/₄d 34¹/₂h
Br. Maple • Briar



JRDV-030 Bev. Mirror
44¹/₄w 2³/₄d 33³/₄h

JRDV-057-4 9 Dw. Dresser
59w 17d 42h
Ru. Rough Sawn Br. Maple • Almond



JRDV-067-1
9 Dw. Dresser w/ 2 Jewelry Dw.
66w 21³/₄d 41h
Oak • Earthtone



JRDV-046 Bev. Mirror
47³/₄w 2³/₄d 39¹/₄h

JRDV-067 7 Dw. Dresser w/ 2 Jewelry Dw.
66w 21³/₄d 32¹/₄h
Oak • Earthtone



JRDV-047-2
Bev. Mirror
30w 2³/₄d 34¹/₄h

JRDV-051-3
6 Dw. Dresser
50w 21³/₄d 34¹/₂h
Ru. Hickory • Earthtone



JRDV-045
Bev. Mirror
52¹/₄w 2³/₄d 33³/₄h

JRDV-063
6 Dw. Dresser
66w 21³/₄d 38¹/₄h
Ru. Cherry • Burnt Umber



JRDV-047-2
Bev. Mirror
30w 2³/₄d 34¹/₄h

JRDV-061
4 Dw. Vanity Dresser
44w 17d 28¹/₂h

JRDV-016
Vanity Bench
16w 16d 20h
Br. Maple • Onyx



JRDV-062 Gentleman's Chest
6 Dw., 1 Dr., 2 Shelves
40w 21³/₄d 52¹/₂h
Oak • Earthtone



JRDV-040 6 Dw. Chest
40w 21³/₄d 52¹/₂h
Ru. Rough Sawn Br. Maple • Almond



JRDV-036 4 Dw. Chest
40w 21³/₄d 49h
Ru. Cherry • Burnt Umber



JRDV-040-4
6 Dw. Chest
40w 17d 52¹/₂h
Ru. Rough Sawn
Br. Maple • Almond



JRDV-032-1 5 Dw. Chest
40w 21³/₄d 39³/₄h
Ru. Hickory • Earthtone



JRDV-032-2 4 Dw. Media Chest
40w 17d 39³/₄h
Br. Maple • Briar



optional pop-out rail
secret compartment
(1¹/₂" depth)



JRDV-021
3 Dr. Nightstand
20w 17d 27¹/₂h
Br. Maple • Briar



JRDV-022
1 Dw., 1 Dr. Nightstand
20w 17d 27¹/₂h
Ru. Cherry • Burnt Umber



JRDV-019
1 Dw. Open Nightstand
21¹/₂w 18³/₄d 27¹/₂h
Ru. Hickory • Earthtone

nightstand options



water tray (N/A w/
sliding top security tray)



LED touch night
light (N/A on 019)



power strip
2 outlets / 2 USB



sliding top security
tray (1³/₄" depth)



JRDV-035 5 Dw. Chest
32¹/₂w 21³/₄d 52¹/₂h
Ru. Cherry • Burnt Umber



JRDV-027
3 Dr. Nightstand
25w 17d 27¹/₂h
Ru. Cherry • Burnt Umber



JRDV-021-1-4
3 Dr. Nightstand
20w 15d 27¹/₂h
Ru. Rough Sawn
Br. Maple • Almond



JRDV-029-2
2 Dr. Nightstand
25w 17d 30¹/₄h
Oak • Earthtone

Denver



JRDV-056
Bev. Jewelry Mirror
26w 17d 68h

JRDV-052 Chifferobe
4 Dw., 3 Dr., 4 Shelves, 1 Adj. Rod
50w 21³/₄d 68³/₄h
Dbl. dr. op. 24³/₄w 19d 26h
Ru. Cherry • Burnt Umber



JRDV-052-1
Sliding Door Chifferobe
5 Dw., 2 Dr., 3 Shelves, 1 Adj. Rod
44w 21³/₄d 68³/₄h
Ru. Hickory • Limed Oak



JRDV-056-3
Bev. Cheval Mirror
26w 17d 68h
Ru. Hickory • Asbury



JRDV-041 Armoire
2 Dw., 2 Dr., 2 Shelves
40w 23d 69h Dbl. dr. op. 32¹/₂w 20¹/₂d 41¹/₂h
Oak • Earthtone



JRDV-041-3 Armoire
3 Dw., 2 Dr., 2 Shelves
40w 23d 69h Dbl. dr. op. 32¹/₂w 20¹/₂d 33¹/₄h
Oak • Earthtone

Dumont

Available in rustic rough sawn brown maple only.



ITD-069 Dumont Bed, queen size shown in Rustic Sawn Brown Maple with Almond stain headboard is 53 $\frac{1}{4}$ " tall; footboard is 24" tall



Standard Features

- 1 $\frac{3}{4}$ " solid wood tops
- $\frac{3}{4}$ " solid side panels
- All doors and drawers are flush
- Solid maple dovetailed drawer boxes
- Bevel mirrors
- Full extension drawer slides
- Soft close hinges on all doors
- Standard hardware: A-27 & A-28



Options

- NO UPCHARGE for any hardware choices on hardware board, except for A-70 & A-71
- Choose your own hardware (upcharge)
- For nightstand options, see nightstand page
- Pop-out rail secret compartment (upcharge)
- Single or double jewelry slide-outs behind mirrors (upcharge)
- Blum under-mount concealed drawer slides with soft close (upcharge)

Dumont



JRD-030 Bev. Mirror
42¹/₂w 1³/₄d 32¹/₄h

JRD-058 9 Dw. Dresser
59w 21³/₄d 42³/₄h
Ru. Rough Sawn Br. Maple •
Almond



JRD-046 Bev. Mirror
46w 1³/₄d 37³/₄h

JRD-068 7 Dw. Dresser
66w 21³/₄d 32¹/₂h
Ru. Rough Sawn Br. Maple •
Almond



JRD-045 Bev. Mirror
50¹/₂w 1³/₄d 32¹/₄h

JRD-069 9 Dw. Dresser
66w 21³/₄d 43³/₄h
Ru. Rough Sawn Br. Maple •
Antique Slate



JRD-045 Bev. Mirror
50¹/₂w 1³/₄d 32¹/₄h

JRD-063 6 Dw. Dresser
66w 21³/₄d 40h
Ru. Rough Sawn Br. Maple • Almond



JRD-046 Bed. Mirror
46w 1³/₄d 37³/₄h

JRD-072 7 Dw. Dresser
72w 21³/₄d 34h
Ru. Rough Sawn Br. Maple • Almond



JRD-073 9 Dw. Dresser
72w 21³/₄d 42³/₄h
Ru. Rough Sawn Br. Maple • Almond



JRD-051-2
2 Dw. Media Chest
50w 17d 36¹/₂h
Ru. Rough Sawn Br. Maple • Almond



JRD-030 Bed. Mirror
42¹/₂w 1³/₄d 32¹/₄h

JRD-057 9 Dw. Dresser
59w 21³/₄d 43³/₄h
Ru. Rough Sawn Br. Maple • Almond



optional pop-out rail
secret compartment
(1¹/₂" depth)



JRD-047-1 Bed. Mirror
28¹/₄w 1³/₄d 39³/₄h

JRD-051-1 4 Dw. Dresser
50w 21³/₄d 36¹/₂h
Ru. Rough Sawn Br. Maple • Vintage Antique
2024 J&R Woodworking | **53**

Dumont



JRD-040 6 Dw. Chest
40w 21³/₄d 54¹/₂h
Ru. Rough Sawn Br. Maple • Almond

**BEST
SELLER**



JRD-035 5 Dw. Chest
32¹/₂w 21³/₄d 54¹/₂h
Ru. Rough Sawn Br. Maple • Almond



JRD-036 4 Dw. Chest
40w 21³/₄d 50³/₄h
Ru. Rough Sawn Br. Maple • Almond



JRD-044
Blanket Chest w/Cedar Bottom
44w 21³/₄d 21¹/₂h
Ru. Rough Sawn Br. Maple • Almond

**BEST
SELLER**



JRD-044-1
Blanket Chest w/Cedar Bottom
50w 21³/₄d 25¹/₂h
Ru. Rough Sawn Br. Maple • Almond



JRD-062 Gentleman's Chest
6 Dw., 1 Dr., 2 Shelves
40w 21³/₄d 54¹/₂h
Ru. Rough Sawn Br. Maple • Almond



optional pop-out rail
secret compartment
(1¹/₂" depth)



JRD-055 11 Dw. Double Chest
59w 21³/₄d 54¹/₂h
Ru. Rough Sawn Br. Maple •
Antique Slate



JRD-019 1 Dw. Nightstand
21¹/₄w 18³/₄d 29¹/₄h
Ru. Rough Sawn Br. Maple •
Vintage Antique



JRD-027 3 Dw. Nightstand
25w 17d 29¹/₄h
Ru. Rough Sawn Br. Maple • Almond



JRD-028 1 Dw. Nightstand
25w 17d 29¹/₄h
Ru. Rough Sawn Br. Maple • Almond



**BEST
SELLER**

JRD-021 3 Dw. Nightstand
20w 17d 29¹/₄h
Ru. Rough Sawn Br. Maple • Almond



JRD-022 1 Dw., 1 Dr. Nightstand
20w 17d 29¹/₄h
Ru. Rough Sawn Br. Maple • Almond



JRD-029-2 2 Dw. Nightstand
25w 17d 32¹/₂h
Ru. Rough Sawn Br. Maple •
Antique Slate



JRD-029-3 3 Dw. Nightstand
30w 17d 32¹/₂h
Ru. Rough Sawn Br. Maple • Almond

nightstand options



water tray (N/A w/
sliding top security tray)



sliding top security
tray (1³/₄" depth)



LED touch night
light (N/A on **019**)



power strip
2 outlets / 2 USB



JRD-051 His & Hers Chest
7 Dw., 2 Dr., 4 Shelves
50w 21³/₄d 54¹/₂h
Ru. Rough Sawn Br. Maple • Almond



JRD-056
Bev. Jewelry Mirror
26w 17d 66h



JRD-056-3
Bev. Cheval Mirror
26w 17d 66h

Dumont



JRD-039 Chest Armoire
6 Dw., 2 Dr., 1 Shelf
40w 21³/₄d 71h
Dbl. dr. op. 32¹/₂w 19d 18³/₄h
Ru. Rough Sawn Br. Maple •
Vintage Antique



JRD-052-1 Sliding Door Chifferobe
5 Dw., 2 Dr., 3 Shelves, 1 Adj. Rod
44w 21³/₄d 71h
Ru. Rough Sawn Br. Maple • Almond



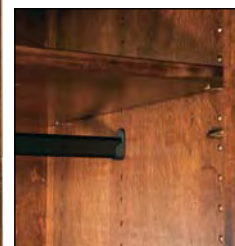
JRD-041-3 Armoire
3 Dw., 2 Dr., 2 Shelves
40w 23d 71h
Dbl. dr. op. 32¹/₂w 20¹/₂d 33¹/₄h
Ru. Rough Sawn Br. Maple • Almond



JRD-041 Armoire
2 Dw., 2 Dr., 2 Shelves
40w 23d 71h
Dbl. dr. op. 32¹/₂w 20³/₄d 41¹/₂h
Ru. Rough Sawn Br. Maple • Almond



JRD-050 Wardrobe Armoire
1 Dw., 2 Dr., 1 Adj. Rod & Shelf
44w 23d 71h
I.D.: 36¹/₂w 21d 55¹/₂h
Ru. Rough Sawn Br. Maple • Almond



all rods are adjustable

Empire

Available in oak, maple, brown maple, cherry, gray elm, hickory, quarter sawn white oak, sap cherry, rustic cherry, rustic hickory, rustic plain sawn white oak, and rustic quarter sawn white oak.

Empire



ITE-080 Empire Bed, king size shown in Brown Maple with Onyx stain headboard 70" tall; footboard 37" tall



Brown Maple or Oak

Standard Features

- 1" solid wood tops
- 3" solid wood posts
- Solid wood inset end panels
- All doors and drawers are flush
- Solid maple dovetailed drawer boxes
- Dental molding
- Beveled mirrors
- Full extension drawer slides
- Soft close door hinges on all doors
- Standard hardware: A-31 & A-32



Room setting shown with A-23 hardware

Options

- NO UPCHARGE for any hardware choices on hardware board, except for A-70 & A-71
- Choose your own hardware (upcharge)
- For nightstand options, see nightstand page of Empire collection
- Pop-out rail secret compartment (upcharge)
- Single or double jewelry slide-outs behind mirrors (upcharge)
- Blum under-mount concealed drawer slides with soft close (upcharge)

Empire

Empire



JRE-030 Bev. Square Post Crown Mirror
46½w 4d 34¾h

JRE-069 9 Dw. Mule Dresser
71w 23¾d 48h



JRE-030 Bev. Square Post Crown Mirror
46½w 4d 34¾h

JRE-057 9 Dw. Dresser
64w 23¾d 48h



JRE-046 Bev. Square Post Crown Mirror
50w 4d 40¾h

JRE-059 7 Dw. Dresser
64w 23¾d 38h



JRE-031 Bev. Square Post Crown Mirror
62½w 4d 34¾h

JRE-066 10 Dw. Dresser
71w 23¾d 44h
Br: Maple • Onyx

**BEST
SELLER**



JRE-047-1 Bev. Mirror
32¾w 4d 42¼h

JRE-051-1 4 Dw. Dresser
55w 23¾d 41h



JRE-030 Bev. Square Post Crown Mirror
46½w 4d 34¾h

JRE-058 9 Dw. Dresser
64w 23¾d 47¼h



JRE-046 Bev. Square Post Crown Mirror
50w 4d 40¾h

JRE-067 7 Dw. Dresser w/2 Jewelry Dw.
71w 23¾d 44h



JRE-031 Bev. Square Post Crown Mirror
62½w 4d 34¾h

JRE-067-1 9 Dw. Dresser w/2 Jewelry Dw.
71w 23¾d 47¼h



Jewelry
Slide-out
Behind
Mirror



Jewelry Drawer



JRE-047-2 Bev. Mirror
32¹/₄w 35¹/₄h

JRE-061 4 Dw. Vanity Dresser
50¹/₂w 19¹/₄d 31¹/₂h

JRE-016 Vanity Bench
16w 16d 20h
Br. Maple • Rich Tobacco



optional pop-out rail
secret compartment
(1¹/₂" depth)



JRE-051-2
2 Dw. Media Chest
55w 19¹/₄d 41h
Br. Maple • Rich Tobacco



JRE-040
6 Dw. Chest
45w 23³/₄d 58¹/₂h



JRE-032
4 Dw. Chest
45w 23³/₄d 38h



JRE-032-1
5 Dw. Chest
45w 23³/₄d 45³/₄h



JRE-040-2
4 Dw. Media Chest
45w 23³/₄d 58¹/₂h



JRE-032-2
4 Dw. Media Chest
45w 19¹/₄d 45³/₄h



JRE-055 11 Dw. Double Chest
64w 23³/₄d 58¹/₂h



JRE-035 5 Dw. Chest
37¹/₂w 23³/₄d 58¹/₂h



JRE-043
9 Dw. Chest
45w 23³/₄d 61h
Br. Maple • Onyx





JRE-062 Gentleman's Chest
6 Dw., 1 Dr., 2 Shelves
45w 23³/₄d 58¹/₂h



JRE-024
6 Dw. Lingerie Chest
28¹/₂w 23³/₄d 62¹/₄h



JRE-023
5 Dw. Lingerie Chest
28¹/₂w 23³/₄d 54¹/₂h



JRE-042
7 Dw. Chest
45w 23³/₄d 62¹/₄h



optional pop-out rail
secret compartment
(1¹/₂" depth)

JRE-044
Blanket Chest w/Cedar Bottom
44w 21¹/₄d 21¹/₂h



JRE-018
C-PAP Nightstand
28¹/₂w 19³/₄d 45³/₄h
Br. Maple • Earthtone
more info on page 8

NEW



JRE-019
1 Dw. Nightstand
24¹/₂w 19¹/₂d 30¹/₂h



JRE-021
3 Dw. Nightstand
27w 19¹/₄d 30¹/₂h



JRE-022
1 Dw., 1 Dr. Nightstand
27w 19¹/₄d 30¹/₂h



JRE-025
3 Dw. Nightstand
27w 19d 28h



JRE-029
3 Dw. Nightstand
27w 19¹/₄d 34³/₄h



JRE-029-2
2 Dw. Nightstand
27w 19¹/₄d 34³/₄h



JRE-029-3
3 Dw. Nightstand
30w 19¹/₄d 34³/₄h
Br. Maple • Rich Tobacco



BEST SELLER

nightstand options



water tray (N/A w/
sliding top security tray)



sliding top security
tray (1³/₄" depth)



LED touch night
light (N/A on 019)



power strip
2 outlets / 2 USB



JRE-038
Bev. Mirror
50w 4d 26h



JRE-051 His & Hers Chest
7 Dw., 2 Dr., 4 Shelves
55w 23³/₄d 58¹/₂h



JRE-056
Bev. Jewelry Mirror
26w 17d 67¹/₂h



JRE-056-3
Bev. Cheval Mirror
26w 17d 67¹/₂h
Br. Maple • Ebony



JRE-039 Chest Armoire
6 Dw., 2 Dr., 1 Shelf
48¹/₂w 25³/₄d 75¹/₄h
Dbl. dr. op. 32¹/₂w 18³/₄d 18³/₄h



optional pop-out rail
secret compartment
(1¹/₂" depth)



JRE-041 Armoire
2 Dw., 2 Dr., 2 Shelves
48¹/₂w 27d 75¹/₄h
Dbl. dr. op. 32¹/₂w 20¹/₂d 41¹/₂h



JRE-050 Wardrobe Armoire
1 Dw., 2 Dr., 1 Adj. Rod & Shelf
52¹/₂w 27d 75¹/₄h
I.D.: 38¹/₂w 20¹/₂d 56¹/₂h



all rods are adjustable



JRE-052 Chifferobe
4 Dw., 3 Dr., 4 Shelves, 1 Adj. Rod
58½w 25¾d 75¼h
Dbl. dr. op. 18½w 18½d 26h



JRE-052-1 Sliding Door Chifferobe
5 Dw., 2 Dr., 3 Shelves,
1 Adj. Rod
52½w 25¾d 75¼h
Br. Maple • Rich Tobacco



JRE-041-3 Armoire
3 Dw., 2 Dr., 2 Shelves
48½w 27d 75¼h
Dbl. dr. op. 32½w 20½d 33¼h



JRE-053 Mule Chest (2 piece),
9 Dw., 4 Dr., 6 Shelves
74½w 25¾d 80¾h
Dbl. dr. op. 27¾w 18½d 31½h



JRE-054 Deluxe Mule Chest (2 piece)
8 Dw., 4 Dr., 6 Shelves
82¾w 27d 80½h
Dbl. dr. op. 31¾w 20½d 36½h

Finland

Available in oak, maple, brown maple, cherry, gray elm, hickory, quarter sawn white oak, sap cherry, rustic cherry, rustic hickory, rustic plain sawn white oak, and rustic quarter sawn white oak.



Finland

ITFN-075 Finland Bed, queen size shown in Brown Maple with Rich Tobacco stain headboard 55½" tall; footboard 26" tall



Brown Maple or Oak

Standard Features

- 1" Solid tops
- Solid wood inset end panels
- Beveled tops
- Arched bases
- Full extension drawer slides
- All doors and drawers are flush
- Beveled mirrors
- Soft close door hinges on all doors
- Standard hardware - two color choices:



A-51 knob
Brushed Nickel



A-50 knob
Black

Options

- NO UPCHARGE for any hardware choices on hardware board, except for A-70 & A-71
- Choose your own hardware (upcharge)
- For nightstand options, see nightstand page of Finland collection
- Pop-out rail secret compartment (upcharge)
- Single or double jewelry slide-outs behind mirrors (upcharge)
- Blum under-mount concealed drawer slides with soft close (upcharge)

Finland

Finland



JRFN-031 Bev. Mirror
57¹/₂w 2¹/₂d 35h

JRFN-069 9 Dw. Mule Dresser
66w 21³/₄d 43¹/₂h
Oak • Old World Mission



JRFN-030 Bev. Mirror
41³/₄w 2¹/₂d 35h

JRFN-057 9 Dw. Dresser
59w 21³/₄d 43¹/₂h
Br. Maple • Rich Tobacco



JRFN-048 Bev. Mirror
41⁵/₈w 2¹/₂d 43h

JRFN-059 7 Dw. Dresser
59w 21³/₄d 33³/₄h
Ru. Hickory • Golden Harvest



JRFN-047-1 Bev. Mirror
27¹/₄w 2¹/₂d 43h

JRFN-051-1 4 Dw. Dresser
50w 21³/₄d 36¹/₄h
Ru. Cherry • Michael's Cherry



JRFN-030 Bev. Mirror
41³/₄w 2¹/₂d 35h

JRFN-066 10 Dw. Dresser
66w 21³/₄d 39¹/₂h
Br. Maple • New Carrington



JRFN-048 Bev. Mirror
41⁵/₈w 2¹/₂d 43h

JRFN-068 7 Dw. Dresser
66w 21³/₄d 32¹/₄h
Oak • Light Asbury

JRFN-030
Bev. Mirror
41³/₄w 2¹/₂d 35h

JRFN-067-1
9 Dw. Dresser
w/2 Jewelry Dw.
66w 21³/₄d 42¹/₂h
QSW0 • Asbury



Jewelry Slide-out Behind Mirror



Jewelry Drawer



JRFN-047-2
Bev. Mirror
27¹/₄w 36h

JRFN-061
4 Dw. Vanity Dresser
44w 17d 30h

JRFN-016
Vanity Bench
16w 16d 20h
Br. Maple • Onyx





JRFN-030 Bev. Mirror
41³/₄w 2¹/₂d 35h

JRFN-059-4 7 Dw. Dresser
59w 17d 33³/₄h
Ru. Walnut • Natural



JRFN-030 Bev. Mirror
41³/₄w 2¹/₂d 35h

JRFN-057-4 9 Dw. Dresser
59w 17d 43¹/₂h
Br. Maple • Briar



JRFN-067
7 Dw. Dresser w/2 Jewelry Dw.
66w 21³/₄d 33³/₄h
QSWO • Asbury



JRFN-058 9 Dw. Dresser
59w 21³/₄d 42¹/₂h
Ru. Hickory • Golden Harvest



JRFN-072 7 Dw. Dresser
72w 21³/₄d 33³/₄h
Ru. Hickory • Golden Harvest



JRFN-073 9 Dw. Dresser
72w 21³/₄d 42¹/₂h
Ru. Hickory • Golden Harvest

Finland



JRFN-035 5 Dw. Chest
32½w 21¾d 54¼h
Oak • Old World Mission



JRFN-040 6 Dw. Chest
40w 21¾d 54¼h
QSWO • Asbury

**BEST
SELLER**



JRFN-042 7 Dw. Chest
40w 21¾d 57¾h
QSWO • Asbury



optional pop-out rail
secret compartment
(1½" depth)



JRFN-035-1-4
4 Dw. Chest
32½w 17d 42½h
Ru. Walnut • Natural



JRFN-040-4
6 Dw. Chest
40w 17d 54¼h
Br. Maple • Briar



JRFN-051-2
2 Dw. Media Chest
50w 17d 36¼h
Ru. Walnut • Natural



JRFN-037
7 Dw. Chest-on-Chest
37½w 21¾d 57h
QSWO • Michael's Cherry



JRFN-040-2
4 Dw. Media Chest
40w 21¾d 54¼h
Br. Maple • Asbury



JRFN-043
9 Dw. Chest
40w 21¾d 56½h
Oak • Light Asbury



JRFN-055 11 Dw. Double Chest
59w 21¾d 54¼h
Ru. QSWO • Burnt Umber



JRFN-024
6 Dw. Lingerie Chest
23½w 21¾d 57¾h
Br. Maple • New Carrington



JRFN-023
5 Dw. Lingerie Chest
23½w 21¾d 50¼h
Br. Maple • New Carrington



JRFN-032-1
5 Dw. Chest
40w 21³/₄d 41h
Ru. Cherry • Michael's Cherry



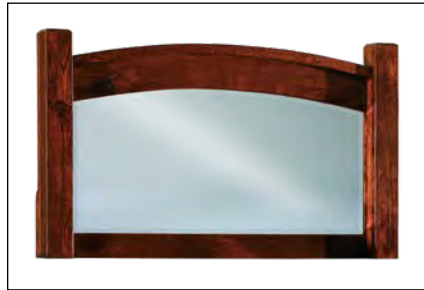
JRFN-032
4 Dw. Chest
40w 21³/₄d 33³/₄h
Ru. Cherry • Michael's Cherry



JRFN-032-2
4 Dw. Media Chest
40w 17d 41h
Ru. Hickory • Golden Harvest



optional pop-out rail
secret compartment
(1¹/₂" depth)



JRFN-038
Bev. Mirror
34³/₈w 21¹/₂d 20h



JRFN-044
Blanket Chest w/Cedar Bottom
44w 21³/₄d 21¹/₄h
Oak • Old World Mission



JRFN-051 His & Hers Chest
7 Dw., 2 Dr., 2 Shelves
50w 21³/₄d 54¹/₄h
Ru. Cherry • Michael's Cherry

nightstand options



water tray (N/A w/
sliding top security tray)



sliding top security
tray (1¾" depth)



LED touch night
light (N/A on 019)



power strip
2 outlets / 2 USB



JRFN-019
1 Dw. Nightstand
21½w 18¾d 29h
Oak • Old World Mission



available with
optional
sliding top



JRFN-021
3 Dw. Nightstand
20w 17d 29h
Ru. Hickory •
Golden Harvest



JRFN-022
1 Dw., 1 Dr. Nightstand
20w 17d 29h
Ru. Hickory • Golden Harvest



JRFN-025
3 Dw. Nightstand
25w 17d 25¼h
Br. Maple • Asbury



JRFN-026
1 Dw., 2 Dw. Nightstand
25w 17d 25¼h
Oak • Light Asbury



JRFN-027
3 Dw. Nightstand
25w 17d 29h
QSWO • Asbury



JRFN-028
1 Dw., 2 Dw. Nightstand
25w 17d 29h
Br. Maple • New Carrington



JRFN-029
3 Dw. Nightstand
25w 17d 32¼h
Br. Maple • Rich Tobacco



JRFN-029-2
2 Dw. Nightstand
25w 17d 32¼h
Br. Maple • Rich Tobacco

nightstand options



water tray (N/A w/
sliding top security tray)



sliding top security
tray (1¾" depth)



LED touch
night light



power strip
2 outlets / 2 USB



JRFN-021-4
3 Dw. Nightstand
15½w 15d 29h
Br. Maple • Briar



JRFN-022-4
1 Dw., 1 Dr. Nightstand
15½w 15d 29h
Br. Maple • Briar



JRFN-056
Bev. Jewelry Mirror
26w 17d 65½h



JRFN-056-3
Bev. Cheval Mirror
26w 17d 65½h
Br. Maple • Briar



JRFN-052-1
Sliding Door Chifferobe
5 Dw., 2 Dr., 3 Shelves, 1 Adj. Rod
45w 22¾d 70¾h
Br. Maple • Kona/Glacier





JRFN-062 Gentleman's Chest
6 Dw., 1 Dr., 2 Shelves
40w 21³/₄d 54¹/₄h
Br. Maple • Rich Tobacco



optional pop-out rail
secret compartment
(1¹/₂" depth)



JRFN-039 Chest Armoire
6 Dw., 2 Dr., 1 Shelf
41w 22³/₄d 72h
Ru. Hickory • Golden Harvest



JRFN-041 Armoire
2 Dw., 2 Dr., 2 Shelves
41w 24d 70³/₄h
Dbl. dr. op. 32¹/₂w 20³/₄d 41¹/₂h
Ru. Hickory • Golden Harvest



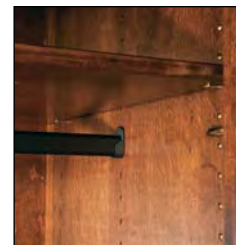
JRFN-041-3 Armoire
3 Dw., 2 Dr., 2 Shelves
41w 24d 70³/₄h
Dbl. dr. op. 32¹/₂w 20³/₄d 33¹/₄h
Ru. Hickory • Golden Harvest



JRFN-052 Chifferobe
4 Dw., 3 Dr., 4 Shelves, 1 Adj. Rod
51w 22³/₄d 70³/₄h
Dbl. dr. op. 24¹⁵/₁₆w 19d 26h
QSWO • Michael's Cherry



JRFN-050 Wardrobe Armoire
1 Dw., 1 Dr., 1 Adj. Rod & Shelf
45w 24d 70³/₄h
Dbl. dr. op. 36¹/₂w 21d 52¹/₂h
Br. Maple • Asbury



all rods are adjustable



JRFN-053 Mule Chest
9 Dw., 4 Dr., 6 Shelves
67w 22³/₄d 76¹/₄h
Dbl. dr. op. 27³/₄w 19d 31¹/₂h
Br. Maple • New Carrington



JRFN-054 Deluxe Mule Chest (2 piece)
8 Dw., 4 Dr., 6 Shelves
75¹/₄w 24d 76¹/₄h
Dbl. dr. op. 31¹/₄w 20³/₄d 36¹/₂h
Ru. QSWO • Burnt Umber

Flush Mission

Available in oak, maple, brown maple, cherry, gray elm, hickory, quarter sawn white oak, sap cherry, rustic cherry, rustic hickory, rustic plain sawn white oak, and rustic quarter sawn white oak.



ITF-077 Flush Mission Bed, queen size
shown in Brown Maple with Almond stain
headboard 48" tall; footboard 24" tall



Standard Features

- 1" solid wood tops
- Full extension drawer slides
- Solid wood inset end panels
- All doors and drawers are flush
- Solid maple dovetailed drawer boxes
- Beveled mirrors
- Soft close door hinges on all doors
- Standard hardware - two color choices:



A-11 & A-12



A-13 & A-14

Options

- NO UPCHARGE for any hardware choices on hardware board, except for A-70 & A-71
- Choose your own hardware (upcharge)
- For nightstand options, see nightstand page of Flush Mission collection
- Pop-out rail secret compartment (upcharge)
- Single or double jewelry slide-outs behind mirrors (upcharge)
- Blum under-mount concealed drawer slides with soft close (upcharge)

Flush Mission



JRF-047-1
Bev. Mirror
28¹/₄w 41h

JRF-051-1
4 Dw. Dresser
50w 21³/₄d 36¹/₄h
Br. Maple • Rich Tobacco



JRF-030
Bev. Mirror
42¹/₂w 33¹/₂h

JRF-057
9 Dw. Dresser
59w 21³/₄d 43¹/₂h
QSWO • Golden Brown

**BEST
SELLER**



Jewelry
Slide-out
Behind
Mirror



JRF-046
Bev. Mirror
46w 39h

JRF-068
7 Dw. Dresser
66w 21³/₄d 32¹/₄h
Ru. QSWO • Lite Asbury



JRF-031
Bev. Mirror
58¹/₂w 33¹/₂h

JRF-069
9 Dw. Dresser
66w 21³/₄d 43¹/₂h
Ru. Cherry •
New Carrington



JRF-067
7 Dw. Dresser w/2 Jewelry Dw.
66w 21³/₄d 33³/₄h



Jewelry Drawer



JRF-067-1
9 Dw. Dresser w/2 Jewelry Dw.
66w 21³/₄d 42¹/₂h



JRF-047-2 Bev. Mirror
28³/₄w 34h

JRF-061 4 Dw. Vanity Dresser
44w 17d 30h

JRF-016 Vanity Bench
16w 16d 20h
Br. Maple • Onyx



JRF-066 10 Dw. Dresser
66w 21³/₄d 39¹/₂h



JRF-059 7 Dw. Dresser
59w 21³/₄d 33³/₄h



JRF-072 7 Dw. Dresser
72w 21³/₄d 33³/₄h



JRF-058 9 Dw. Dresser
59w 21³/₄d 42¹/₂h



JRF-073 9 Dw. Dresser
72w 21³/₄d 42¹/₂h

Flush Mission



JRF-042
7 Dw. Chest
40w 21³/₄d 57³/₄h
Ru. QSWO • Lite Asbury



optional pop-out rail
secret compartment
(1¹/₂" depth)



JRF-043
9 Dw. Chest
40w 21³/₄d 56¹/₂h



JRF-035
5 Dw. Chest
32¹/₂w 21³/₄d 54¹/₄h



JRF-062
Gentleman's Chest
6 Dw., 1 Dr., 2 Shelves
40w 21³/₄d 54¹/₄h



JRF-037
7 Dw. Chest-on-Chest
37¹/₂w 21³/₄d 57h



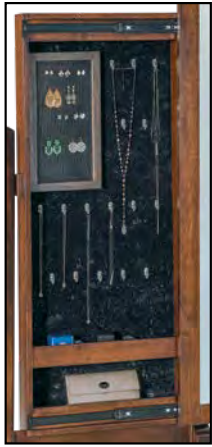
JRF-032-2
4 Dw. Media Chest
open media space above
JRF-032 4 Dw. Chest
40w 17d 41h



JRF-032 4 Dw. Chest
40w 21³/₄d 33³/₄h



JRF-032-1 5 Dw. Chest
40w 21³/₄d 41h



JRF-056
Bev. Jewelry Mirror
26w 17d 65³/₄h



JRF-056-3
Bev. Cheval Mirror
26w 17d 65³/₄h
Oak • Earthtone



JRF-051 His & Hers Chest
7 Dw., 2 Dr., 4 Shelves
50w 21³/₄d 54h



JRF-040 6 Dw. Chest
40w 21³/₄d 54¹/₄h
Br. Maple • Rich Tobacco



JRF-055
11 Dw. Double Chest
59w 21³/₄d 54¹/₄h



JRF-040-2
4 Dw. Media Chest
open media space replaces
top 2 drawers of JRF-040
40w 21³/₄d 54¹/₄h



JRF-044 Blanket Chest w/Cedar Bottom
44w 21³/₄d 21¹/₄h



JRF-023 5 Dw. Lingerie Chest
23¹/₂w 21³/₄d 50¹/₄h



JRF-024 6 Dw. Lingerie Chest
23¹/₂w 21³/₄d 57³/₄h

Flush Mission

nightstand options



water tray (N/A w/
sliding top security tray)



sliding top
security tray (1¾"d)



LED touch night
light (N/A on **019**)



power strip
2 outlets / 2 USB



JRF-019
1 Dw. Nightstand
21½w 18¾d 29h



JRF-021
3 Dw. Nightstand
20w 17d 29h
Ru. Cherry • New Carrington

**BEST
SELLER**



JRF-022
1 Dw., 1 Dr. Nightstand
20w 17d 29h
QSWO • Golden Brown



JRF-018
C-PAP Nightstand
22w 17d 42½h
more info on page 8

NEW



JRF-025
3 Dw. Nightstand
25w 17d 25¼h
Br. Maple • Rich Tobacco



JRF-026
1 Dw., 2 Dr. Nightstand
25w 17d 25¼h



JRF-027
3 Dw. Nightstand
25w 17d 29h
Ru. QSWO • Lite Asbury



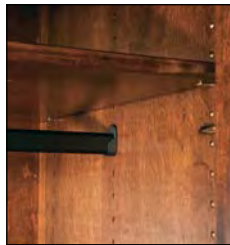
JRF-028
1 Dw., 2 Dr. Nightstand
25w 17d 29h



JRF-029
3 Dw. Nightstand
25w 17d 32¼h



JRF-029-2
2 Dw. Nightstand
25w 17d 32¼h



all rods are adjustable

JRF-050 Wardrobe Armoire
 1 Dw., 2 Dr., 1 Adj. Rod & Shelf
 44w 23d 70³/₄h
 I.D.: 36¹/₂w 21d 55¹/₂h
 Ru. Cherry • New Carrington



optional pop-out rail
 secret compartment
 (1¹/₂" depth)

JRF-039 Chest Armoire
 6 Dw., 2 Dr., 1 Shelf
 40w 21³/₄d 70³/₄h
 Dbl. dr. op. 32¹/₂w 19d 18³/₄h
 QSW0 • Golden Brown



JRF-041 Armoire
 2 Dw., 2 Dr., 2 Shelves
 40w 23d 70³/₄h
 Dbl. dr. op. 32¹/₂w 21d 41¹/₂h



JRF-041-3 Armoire (1 piece)
 3 Dw., 2 Dr., 2 Shelves
 40w 23d 70³/₄h
 Dbl. dr. op. 32¹/₂w 20³/₄d 33¹/₄h

Flush Mission



JRF-052 Chifferobe
4 Dw., 3 Dr., 4 Shelves, 1 Adj. Rod
50w 21³/₄d 70³/₄h
Dbl. dr. op. 24⁷/₈w 19d 26h



JRF-052-1
Sliding Door Chifferobe
5 Dw., 2 Dr., 3 Shelves, 1 Adj. Rod
44w 21³/₄d 70³/₄h
Br. Maple • Michael's Cherry



JRF-053 Mule Chest (2 piece)
9 Dw., 4 Dr., 6 Shelves
66w 21³/₄d 76¹/₄h
Dbl. dr. op. 27³/₄w 19d 31¹/₂h



JRF-054 Deluxe Mule Chest (2 piece)
8 Dw., 4 Dr., 6 Shelves
74w 23d 76¹/₄h
Dbl. dr. op. 31¹/₄w 20³/₄d 36¹/₂h

Heidi

Available in oak, maple, brown maple, cherry, gray elm, hickory, quarter sawn white oak, sap cherry, rustic cherry, rustic hickory, rustic plain sawn white oak, and rustic quarter sawn white oak.



ITHI-079 Heidi Bed, king size
shown in Sap Cherry with Old Museum stain
headboard is 64 $\frac{3}{4}$ " tall; footboard is 33" tall



Standard Features

- 1 $\frac{3}{4}$ " solid tops
- 3" solid wood posts
- Solid wood inset side panels
- All doors and drawers are flush
- Solid maple dovetailed drawer boxes
- Beveled mirrors
- Full extension drawer slides
- Soft close door hinges on all doors
- Standard hardware: A-25 & A-26



Options

- **NO UPCHARGE** for any hardware choices on hardware board, except for A-70 & A-71
- Choose your own hardware (upcharge)
- For nightstand options, see nightstand page
- Pop-out rail secret compartment (upcharge)
- Single or double jewelry slide-outs behind mirrors (upcharge)
- Blum under-mount concealed drawer slides with soft close (upcharge)

*In memory of our daughter, Heidi Ann Miller, d. September 14, 2007
Dedicated to our first grandchild, Heidi Ann Lehman, b. January 20, 2014*

Heidi



JRHI-030 Bev. Mirror
42½w 2½d 32¼h

JRHI-063 6 Dw. Dresser
69w 22½d 40¾h
Ru. QSWO • Light Asbury



JRHI-045 Bev. Mirror
50½w 2½d 32¼h

JRHI-066 10 Dw. Dresser
69w 22½d 40¾h
Ru. Walnut • Almond



Jewelry Drawer

Jewelry
Slide-out
Behind
Mirror



JRHI-045 Bev. Mirror
50½w 2½d 32¼h

JRHI-069 9 Dw. Dresser
69w 22½d 44¾h
Ru. Cherry • Burnt Umber



JRHI-045 Bev. Mirror
50½w 2½d 32¼h

JRHI-067-1 9 Dw. Dresser w/2 Jewelry Dw.
69w 22½d 43¾h
Ru. Hickory • Golden Pecan



JRHI-046 Bev. Mirror
46w 2½d 37¾h

JRHI-068 7 Dw. Dresser
69w 22½d 33¾h
Ru. Cherry • Michael's Cherry



JRHI-046 Bev. Mirror
46w 2½d 37¾h

JRHI-059 7 Dw. Dresser
62w 22½d 34¾h
Br. Maple • Earthtone

JRHI-030 Bev. Mirror
42½w 2½d 32¾h

JRHI-058 9 Dw. Dresser
62w 22½d 43¾h
Oak • Earthtone



JRHI-030 Bev. Mirror
42½w 2½d 32¾h

JRHI-057 9 Dw. Dresser
62w 22½d 44¾h
Ru. QSWO • Asbury



JRHI-047-2 Bev. Mirror
28¾w 2½d 32¾h

JRHI-061 4 Dw. Vanity Dresser
48½w 18d 29½h

JRHI-016 Vanity Bench
16w 16d 20h
Ru. Hickory • Golden Pecan



JRHI-047-1 Bev. Mirror
28¾w 2½d 39¾h

JRHI-051-1 4 Dw. Dresser
53w 22½d 37h
Br. Maple • Briar

Heidi



JRHI-067 7 Dw. Dresser
w/2 Jewelry Dw.
69w 22¹/₂d 34³/₄h
Ru. Hickory • Golden Pecan



Jewelry Drawer



optional pop-out rail
secret compartment
(1¹/₂" depth)



JRHI-042 7 Dw. Chest
43w 22¹/₂d 58¹/₂h
Ru. Cherry • Burnt Umber



JRHI-040 6 Dw. Chest
43w 22¹/₂d 55¹/₄h
Ru. QSWO • Asbury



JRHI-036 4 Dw. Chest
43w 22¹/₂d 51³/₄h
Ru. QSWO • Light Asbury



JRHI-035-4 5 Dw. Chest
35¹/₂w 18d 55¹/₄h
Br. Maple • Briar



JRHI-062 Gentleman's Chest
6 Dw., 1 Dr., 2 Shelves
43w 22¹/₂d 55¹/₄h
Br. Maple • Earthtone



JRHI-035 5 Dw. Chest
35¹/₂w 22¹/₂d 55¹/₄h
Br. Maple • Briar



JRHI-055 11 Dw. Double Chest
62w 22 $\frac{1}{2}$ d 55 $\frac{1}{4}$ h
Ru. Walnut • Almond



JRHI-051 His & Hers Chest
7 Dw., 2 Dr., 4 Shelves
53w 22 $\frac{1}{2}$ d 55 $\frac{1}{4}$ h
Ru. Cherry • Michael's Cherry



JRHI-024 6 Dw. Lingerie Chest
26 $\frac{1}{2}$ w 22 $\frac{1}{2}$ d 58 $\frac{1}{2}$ h
Ru. Hickory • Golden Pecan



JRHI-023 5 Dw. Lingerie Chest
26 $\frac{1}{2}$ w 22 $\frac{1}{2}$ d 51 $\frac{1}{4}$ h
Ru. Hickory • Golden Pecan



JRHI-051-2 2 Dw. Media Chest
53w 18d 37h
Br. Maple • Briar



JRHI-032-1 5 Dw. Chest
43w 22 $\frac{1}{2}$ d 42h
Oak • Golden Pecan



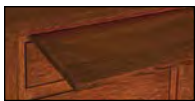
JRHI-032-2 4 Dw. Media Chest
43w 18d 42h
Br. Maple • Tavern



JRHI-032 4 Dw. Chest
43w 22 $\frac{1}{2}$ d 34 $\frac{3}{4}$ h
Oak • Golden Pecan

Heidi

nightstand options



water tray (N/A w/
sliding top security tray)



sliding top security
tray (1 $\frac{3}{4}$ " depth)



LED touch night
light (N/A on **019**)



power strip
2 outlets / 2 USB



JRHI-019-4
1 Dw. Nightstand
20w 18 $\frac{1}{4}$ d 28 $\frac{1}{2}$ h
Br. Maple • Briar



JRHI-044
Blanket Chest w/cedar bottom
44w 22 $\frac{1}{2}$ d 22 $\frac{1}{4}$ h
Ru. QSWO • Light Asbury



JRHI-056
Bev. Jewelry Mirror
26w 17d 66h



JRHI-056-3
Bev. Cheval Mirror
26w 17d 66h
Ru. Hickory • Burnt Umber



JRHI-019
1 Dw. Nightstand
22 $\frac{1}{4}$ w 20 $\frac{1}{4}$ d 28 $\frac{1}{2}$ h
Br. Maple • Earthtone



JRHI-021
3 Dw. Nightstand
24 $\frac{3}{4}$ w 18d 28 $\frac{1}{2}$ h
Ru. QSWO • Light Asbury



JRHI-021-4
3 Dw. Nightstand
20w 16d 28 $\frac{1}{2}$ h
Ru. QSWO • Asbury



JRHI-027
3 Dw. Nightstand
29 $\frac{1}{2}$ w 18d 28 $\frac{1}{2}$ h
Ru. Walnut • Almond



JRHI-022
1 Dw., 1 Dr. Nightstand
24 $\frac{3}{4}$ w 18d 28 $\frac{1}{2}$ h
Oak • Earthtone



JRHI-028
1 Dw., 2 Dr. Nightstand
29 $\frac{1}{2}$ w 18d 28 $\frac{1}{2}$ h
Ru. Hickory • Golden Pecan



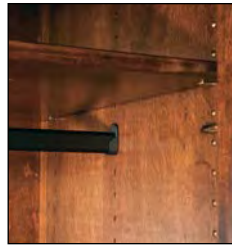
JRHI-029-2
2 Dw. Nightstand
24 $\frac{3}{4}$ w 18d 31 $\frac{1}{2}$ h
Ru. Cherry • Burnt Umber



JRHI-029-3
3 Dw. Nightstand
29 $\frac{1}{2}$ w 18d 31 $\frac{1}{2}$ h
Sap Cherry • Old Museum



optional pop-out rail
secret compartment
(1½" depth)



all rods are adjustable

JRHI-039 Chest Armoire
6 Dw., 2 Dr., 1 Shelf
44½w 23¼d 71¾h
Dbl. dr. op. 32½w 18¾d 18¾h
Oak • Earthtone



JRHI-050 Wardrobe Armoire
1 Dw., 2 Dr., 1 Adj. Rod & Shelf
48½w 24¾d 71¾h
I.D.: 38½w 20½d 54h
Ru. Cherry • Burnt Umber



JRHI-041-3 Armoire
3 Dw., 2 Dr., 2 Shelves
44½w 24¾d 71¾h
Dbl. dr. op. 32½w 20½d 33¾h
Ru. Hickory • Golden Pecan



JRHI-041 Armoire
2 Dw., 2 Dr., 2 Shelves
44½w 24¾d 71¾h
Dbl. dr. op. 32½w 20½d 41½h
Ru. Hickory • Golden Pecan



JRHI-052 Chifferobe
4 Dw., 3 Dr., 4 Shelves, 1 Adj. Rod
54 $\frac{1}{2}$ w 23 $\frac{1}{4}$ d 71 $\frac{3}{4}$ h
Dbl. dr. op. 18 $\frac{1}{2}$ w 18 $\frac{1}{2}$ d 26h
Ru. QSWO • Asbury



JRHI-052-1
Sliding Door Chifferobe
5 Dw., 2 Dr., 3 Shelves, 1 Adj. Rod
48 $\frac{1}{2}$ w 23 $\frac{1}{4}$ d 71 $\frac{3}{4}$ h
Oak • Asbury Brown



JRHI-054 Deluxe Mule Chest (2 piece)
8 Dw., 4 Dr., 6 Shelves
78 $\frac{3}{4}$ w 24 $\frac{3}{4}$ d 77 $\frac{3}{4}$ h
Dbl. dr. op. 31 $\frac{3}{8}$ w 20 $\frac{1}{2}$ d 36 $\frac{1}{2}$ h
Ru. Walnut • Almond



JRHI-053 Mule Chest (2 piece)
9 Dw., 4 Dr., 6 Shelves
70 $\frac{1}{2}$ w 23 $\frac{1}{4}$ d 77 $\frac{3}{4}$ h
Dbl. dr. op. 27 $\frac{3}{4}$ w 18 $\frac{1}{2}$ d 31 $\frac{1}{2}$ h
Oak • Briar

Heritage

Available in oak, maple, brown maple, cherry, gray elm, hickory, quarter sawn white oak, sap cherry, rustic cherry, rustic hickory, rustic plain sawn white oak, and rustic quarter sawn white oak.



ITNW-090 Non-Wrap Bed, queen size
shown in Oak with Lite Asbury stain
headboard 52" tall; footboard 36" tall



Standard Features

- $\frac{3}{4}$ " Solid wood tops and side panels
- Full extension drawer slides
- Thumbnail edge on tops
- Cathedral raised panel doors and drawer fronts
- Unique Heritage style feet
- Beveled mirrors
- Solid maple dovetailed drawer boxes
- Soft close door hinges on all doors
- Standard hardware: A-43, A-44



Options

- NO UPCHARGE for any hardware choices on hardware board, except for A-70 & A-71
- Choose your own hardware (upcharge)
- For nightstand options, see nightstand page of Heritage collection
- Single or double jewelry slide-outs behind mirrors* (upcharge)
- *Jewelry slide-outs are NOT AVAILABLE on tri-view mirrors
- Blum under-mount concealed drawer slides with soft close (upcharge)
- Pop-out rail secret compartment NOT AVAILABLE

Heritage



JRH-049 Bev. Tri-view Mirror
52w 47¹/₂h

JRH-066 10 Dw. Dresser
66w 21³/₄d 39¹/₂h



JRS-048 Shaker Bev. Mirror
42w 42h

JRH-059 7 Dw. Dresser
59w 21³/₄d 33³/₄h



JRH-049-2 Bev. Tri-view Mirror
52w 40¹/₂h

JRH-057 9 Dw. Dresser
59w 21³/₄d 43¹/₂h



Jewelry
Slide-out
Behind
Mirror, *not
available
on tri-view
mirrors*



JRS-033 Shaker Bev. Mirror
42w 37h

JRH-058 9 Dw. Dresser
59w 21³/₄d 42¹/₂h



JRH-049-1 Bev. Mirror
28³/₄w 1⁵/₈d 40¹/₂h

JRH-061 4 Dw. Vanity Dresser
44w 16¹/₂d 30h

JRH-016 Vanity Bench
16w 16d 20h
Oak • Autumn Oak



JRH-049-1 Bev. Mirror
28³/₄w 1⁵/₈d 40¹/₂h

JRH-051-1 4 Dw. Dresser
50w 21³/₄d 36¹/₄h



JRH-049 Bev. Tri-View Mirror
52w 47¹/₂h

JRH-069 9 Dw. Dresser
66w 21³/₄d 43¹/₂h



JRH-048 Bev. Mirror
46w 42h



JRH-031 Bev. Mirror
58¹/₂w 36¹/₂h



JRH-038 Bev. Mirror
46w 28h



JRH-030 Bev. Mirror
42¹/₂w 36¹/₂h



JRH-042
7 Dw. Chest
40w 21³/₄d 57¹/₂h



JRH-043
9 Dw. Chest
40w 21³/₄d 56¹/₄h

Heritage



JRH-067-1
9 Dw. Dresser w/2 Jewelry Dw.
66w 21³/₄d 42¹/₂h



JRH-067
7 Dw. Dresser w/2 Jewelry Dw.
66w 21³/₄d 33³/₄h



Jewelry Drawer



JRH-068 7 Dw. Dresser
66w 21³/₄d 32¹/₄h



JRH-072 7 Dw. Dresser
72w 21³/₄d 33³/₄h



JRH-073 9 Dw. Dresser
72w 21³/₄d 42¹/₂h



JRH-055 11 Dw. Double Chest
59w 21³/₄d 54h



JRH-037
7 Dw. Chest-on-Chest
37½w 21¾d 57h



JRH-040
6 Dw. Chest
40w 21¾d 54h

**BEST
SELLER**



JRH-040-2 4 Dw. Media Chest
open media space replaces
top 2 drawers of JRH-040
40w 21¾d 54h



JRH-032-2 4 Dw. Media Chest
open media space above
JRH-032 4 Dw. Chest
40w 16½d 41h



JRH-044 Blanket Chest
w/False Drawer Fronts & Cedar Bottom
44w 21d 22h



JRH-032-1
5 Dw. Chest
40w 21¾d 41h



JRH-032
4 Dw. Chest
40w 21¾d 33¾h



JRH-056
Bev. Jewelry Mirror
25¾w 17d 65h



JRH-056-3
Bev. Cheval Mirror
25¾w 17d 65h
Oak • Michael's Cherry



JRH-024
6 Dw. Lingerie Chest
23½w 21¾d 57½h



JRH-023
5 Dw. Lingerie Chest
23½w 21¾d 50h



JRH-035
5 Dw. Chest
32½w 21¾d 54h

Heritage



JRH-019
1 Dw. Nightstand
21¼w 18d 29h



JRH-062 Gentleman's Chest
6 Dw., 1 Dr., 2 Shelves
40w 21¾d 54h



JRH-051 His & Hers Chest
7 Dw., 2 Dr., 4 Shelves
50w 21¾d 54h

nightstand options



water tray (N/A w/
sliding top security tray)



sliding top security
tray (1¾" depth)



LED touch night
light (N/A on **019**)



power strip
2 outlets / 2 USB



JRH-021
3 Dw. Nightstand
20w 16½d 29h

**BEST
SELLER**



JRH-022
1 Dw., 1 Dr. Nightstand
20w 16½d 29h



JRH-025
3 Dw. Nightstand
25w 16½d 25¼h



JRH-026
1 Dw., 2 Dr. Nightstand
25w 16½d 25¼h



JRH-028
1 Dw., 2 Dr. Nightstand
25w 16½d 29h



JRH-027
3 Dw. Nightstand
25w 16½d 29h



JRH-029
3 Dw. Nightstand
25w 16½d 32¼h



JRH-029-2
2 Dw. Nightstand
25w 16½d 31¾h



JRH-052-1 Sliding Door Chifferobe
 5 Dw., 2 Dr., 3 Shelves, 1 Adj. Rod
 45w 22d 71³/₄h
 Oak • Kona



JRH-052 Chifferobe
 4 Dw., 3 Dr., 4 Shelves, 1 Adj. Rod
 51w 22d 71³/₄h
 Dbl. dr. op. 24⁷/₈w 19d 26h

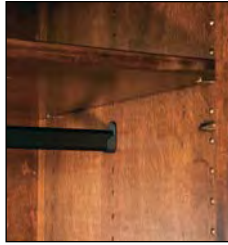


JRH-039 Chest Armoire
 6 Dw., 2 Dr., 1 Shelf
 41w 22d 71³/₄h
 Dbl. dr. op. 32¹/₂w 19d 18³/₄h



JRH-041 Armoire
 2 Dw., 2 Dr., 2 Shelves
 41w 23³/₈d 72h
 Dbl. dr. op. 32¹/₂w 21d 41¹/₂h

Heritage



all rods are adjustable

JRH-050 Wardrobe Armoire
1 Dw., 2 Dr.,
1 Adj. & Shelf
45w 23³/₄d 72h
I.D.: 39¹/₂w 21d 55¹/₂h



JRH-041-3 Armoire
3 Dw., 2 Dr.,
2 Shelves
41w 23³/₄d 72h
Dbl. dr. op.
32¹/₂w 21d 33³/₄h



JRH-053 Mule Chest (2 piece)
9 Dw., 4 Dr., 6 Shelves
67w 22d 77³/₄h
Dbl. dr. op. 27³/₄w 19d 31¹/₂h



JRH-054 Deluxe Mule Chest (2 piece)
8 Dw., 6 Shelves
75¹/₄w 23³/₄d 77³/₄h
Dbl. dr. op. 31¹/₄w 21d 36¹/₂h

Houston

Available in rustic sawn brown maple only.

Houston



ITHU-088-76 Houston Bed, king size shown in Rustic Sawn Brown Maple with Almond stain bed posts are 6" x 6"; headboard is 76½" tall; footboard is 32½" tall



NOTE: On bed and mirror, all top & bottom cross beams go through post and are fastened with 1" wood pins all the way through (exposing both sides)



Rustic Rough Sawn Brown Maple ONLY

Standard Features

- 1¾" solid wood tops
- 3½" solid wood posts
- ¾" solid side panels
- Solid maple dovetailed drawer boxes
- Full extension drawer slides
- Soft close door hinges
- Beveled mirrors
- Standard hardware: A-46 & A-47



Options

- NO UPCHARGE for any hardware choices on hardware board, except for A-70 & A-71
- Choose your own hardware (upcharge)
- For nightstand options, see nightstand page of Houston collection
- Pop-out rail secret compartment (upcharge)
- Single or double jewelry slide-outs behind mirrors (upcharge)
- Blum under-mount concealed drawer slides with soft close (upcharge)

Houston

Houston



JRHU-031 Bev. Mirror
61³/₄w 3¹/₂d 36¹/₂h

JRHU-074 9 Dw. Dresser
77w 23³/₄d 47¹/₂h
Ru. Sawn Br. Maple • Almond



JRHU-045 Bev. Mirror
54w 3¹/₂d 36¹/₂h

JRHU-069 9 Dw. Dresser
71w 23³/₄d 47¹/₂h
Ru. Sawn Br. Maple • Tavern



Jewelry
Slide-out
Behind
Mirror



JRHU-045 Bev. Mirror
54w 3¹/₂d 36¹/₂h

JRHU-067-1 9 Dw. Dresser
w/2 Jewelry Dw.
71w 23³/₄d 46¹/₂h
Ru. Sawn Br. Maple • Earth Tone



JRHU-045 Bev. Mirror
54w 3¹/₂d 36¹/₂h

JRHU-063 6 Dw. Dresser
71w 23³/₄d 43³/₄h
Ru. Sawn Br. Maple • Vintage Antique

**BEST
SELLER**





JRHU-030 Bev. Mirror
46w 3 $\frac{1}{2}$ d 36 $\frac{1}{2}$ h

JRHU-057 9 Dw. Dresser
64w 23 $\frac{3}{4}$ d 47 $\frac{1}{2}$ h
Ru. Rough Sawn Br. Maple • Tavern



JRHU-046 Bev. Mirror
49 $\frac{1}{4}$ w 3 $\frac{1}{2}$ d 42h

JRHU-068 7 Dw. Dresser
71w 23 $\frac{3}{4}$ d 36 $\frac{1}{4}$ h
Ru. Rough Sawn Br. Maple • Almond



JRHU-030 Bev. Mirror
46w 3 $\frac{1}{2}$ d 36 $\frac{1}{2}$ h

JRHU-058 9 Dw. Dresser
64w 23 $\frac{3}{4}$ d 46 $\frac{1}{2}$ h
Ru. Rough Sawn Br. Maple • Antique Slate



JRHU-047-1 Bev. Mirror
31 $\frac{1}{2}$ w 3 $\frac{1}{2}$ d 44h

JRHU-051-1-4 4 Dw. Dresser
55w 19 $\frac{1}{4}$ d 40 $\frac{1}{4}$ h
Ru. Rough Sawn Br. Maple • Almond

Houston



Jewelry
Slide-out
Behind
Mirror



JRHU-047-2 Bev. Mirror
31½w 3½d 37h

JRHU-047-1 Bev. Mirror
31½w 3½d 44h

JRHU-056-8 Wall Mirror
38¾w 3½d 78½h
Ru. Rough Sawn Br. Maple • Almond

JRHU-061 4 Dw. Vanity Dresser
51w 19¼d 32¾h

JRHU-051-1 4 Dw. Dresser
55w 23¾d 40¾h
Ru. Rough Sawn Br. Maple • Almond

JRHU-016 Vanity Bench
16w 16d 20h
Ru. Rough Sawn Br. Maple • Driftwood



optional pop-out rail
secret compartment
(1½" depth)



**BEST
SELLER**

JRHU-036 4 Dw. Chest
45w 23¾d 54¾h
*Ru. Rough Sawn
Br. Maple • Vintage Antique*



available with
optional
pop-out rail

JRHU-040 6 Dw. Chest
45w 23¾d 58h
Ru. Rough Sawn Br. Maple • Tavern

JRHU-035 5 Dw. Chest
37½w 23¾d 58h
Ru. Rough Sawn Br. Maple • Almond



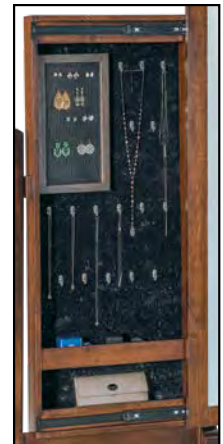
JRHU-055 11 Dw. Double Chest
64w 23³/₄d 58h
Ru. Rough Sawn Br. Maple • Almond



JRHU-062 Gentleman's Chest
6 Dw., 1 Dr., 2 Shelves
45w 23³/₄d 58h
Ru. Rough Sawn Br. Maple • Tavern



JRHU-035-4
5 Dw. Chest
37¹/₂w 19¹/₄d 58h
Ru. Rough Sawn Br. Maple • Almond



JRHU-056
Bev. Jewelry Mirror
26w 17d 68h

JRHU-056-3
Bev. Cheval Mirror
26w 17d 68h
Ru. Rough Sawn Br. Maple • Vintage Antique



JRHU-051-2 2 Dw. Media Chest
55w 19¹/₄d 40¹/₄h
Ru. Rough Sawn Br. Maple • Almond



JRHU-044
Blanket Chest w/cedar bottom
44w 21¹/₄d 23h
Ru. Rough Sawn Br. Maple • Almond
2024 J&R Woodworking | **101**

Houston



JRHU-019
1 Dw. Nightstand
27w 21½d 31½h
Ru. Rough Sawn Br. Maple • Vintage Antique



JRHU-019-3
1 Dw. Nightstand
30w 21½d 31½h
Ru. Rough Sawn Br. Maple • Earth Tone



JRHU-019-4
1 Dw. Nightstand
22¼w 19½d 31½h
Ru. Rough Sawn Br. Maple • Almond



QUICK SHIP
of Indiana
EST. 2015
available with optional sliding top

BEST SELLER

JRHU-021
3 Dw. Nightstand
27w 19¾d 31½h
Ru. Rough Sawn Br. Maple • Tavern



JRHU-021-3
3 Dw. Nightstand
30w 19¾d 31½h
Ru. Rough Sawn Br. Maple • Almond



JRHU-021-4
3 Dw. Nightstand
22¼w 17¾d 31½h
Ru. Rough Sawn Br. Maple • Antique Slate



JRHU-022
1 Dw., 1 Dr. Nightstand
27w 19¾d 31½h
Ru. Rough Sawn Br. Maple • Vintage Antique

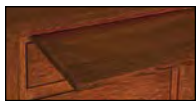


JRHU-022-3
1 Dw., 1 Dr. Nightstand
30w 19¾d 31½h
Ru. Rough Sawn Br. Maple • Earth Tone



JRHU-022-4
1 Dw., 1 Dr. Nightstand
22¼w 17¾d 31½h
Ru. Rough Sawn Br. Maple • Almond

nightstand options



water tray (N/A w/ sliding top security tray)



sliding top security tray (1¾" depth)



LED touch night light (N/A on 019)



power strip 2 outlets / 2 USB



JRHU-029-2
2 Dw. Nightstand
27w 19¾d 34½h
Ru. Rough Sawn Br. Maple • Tavern



JRHU-029-3
3 Dw. Nightstand
30w 19¾d 34½h
Ru. Rough Sawn Br. Maple • Tavern





JRHU-052 Chifferobe
 4 Dw., 3 Dr., 4 Shelves, 1 Adj. Rod
 55w 23³/₄d 74¹/₂h
 Dbl. dr. op. 18¹/₂w 18¹/₂d 26h
 Ru. Rough Sawn Br. Maple •
 Almond



JRHU-052-1 Sliding Door Chifferobe
 5 Dw., 2 Dr., 3 Shelves, 1 Adj. Rod
 49w 23³/₄d 74¹/₂h
 Ru. Rough Sawn Br. Maple •
 Vintage Antique



JRHU-041-3 Armoire
 3 Dw., 2 Dr., 2 Shelves
 45w 25¹/₄d 74¹/₂h
 Dbl. dr. op. 32¹/₂w 20³/₄d 33³/₄h
 Ru. Rough Sawn Br. Maple • Antique Slate



JRHU-041 Armoire
 2 Dw., 2 Dr., 2 Shelves
 45w 25¹/₄d 74¹/₂h
 Dbl. dr. op. 32¹/₂w 20³/₄d 41¹/₂h
 Ru. Rough Sawn Br. Maple • Antique Slate
 2024 J&R Woodworking | **103**

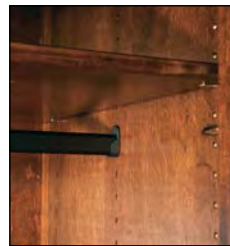
Houston



JRHU-039 Chest Armoire
6 Dw., 2 Dr., 1 Shelf
45w 23³/₄d 74¹/₂h
Dbl. dr. op. 32¹/₂w 19d 18³/₄h
Ru. Rough Sawn Br. Maple •
Earth Tone



optional pop-out rail
secret compartment
(1¹/₂" depth)



all rods are adjustable



JRHU-050 Wardrobe Armoire
1 Dw., 2 Dr., 1 Adj. Rod & Shelf
49w 25¹/₄d 74¹/₂h
I.D.: 37w 20³/₄d 54¹/₄h
Ru. Rough Sawn Br. Maple •
Vintage Antique



JRHU-053 Mule Chest (2 piece)
9 Dw., 4 Dr., 6 Shelves
71w 23³/₄d 80³/₄h
Dbl. dr. op. 27³/₄w 18³/₄d 31¹/₂h
Ru. Rough Sawn Br. Maple • Almond



JRHU-054 Deluxe Mule Chest (2 piece)
8 Dw., 4 Dr., 6 Shelves
79w 25¹/₄d 80³/₄h
Dbl. dr. op. 31³/₄w 20³/₄d 36¹/₂h
Ru. Rough Sawn Br. Maple • Antique Slate

Imperial

Available in oak, maple, brown maple, cherry, gray elm, hickory, quarter sawn white oak, sap cherry, rustic cherry, rustic hickory, rustic plain sawn white oak, and rustic quarter sawn white oak.



ITIM-052 Imperial Bed, queen size with tall posts
shown in Rustic Hickory with Almond stain
bed posts are 3" x 3" x 82"; headboard is 52" tall; footboard is 30½" tall



Standard Features

- 1" solid wood tops
- ¾" solid wood side panels
- All doors and drawers are flush
- Solid maple dovetailed drawer boxes
- Bevel mirrors
- Full extension drawer slides
- Standard hardware: A-48



Options

- NO UPCHARGE for any hardware choices on hardware board, except for A-70 & A-71
- Choose your own hardware (upcharge)
- For nightstand options, see nightstand page of Imperial collection
- Pop-out rail secret compartment NOT AVAILABLE
- Single or double jewelry slide-outs behind mirrors (upcharge)
- Blum under-mount concealed drawer slides with soft close (upcharge)

Imperial

Imperial

Imperial



Jewelry
Slide-out
Behind
Mirror



JRIM-030 Bev. Mirror
40¹/₄w 1³/₄d 34¹/₂h

**BEST
SELLER**

JRIM-057 9 Dw. Dresser
59w 23¹/₄d 43¹/₂h
Red Oak • Briar



JRIM-045 Bev. Mirror
48³/₄w 1³/₄d 34¹/₂h

JRIM-069 9 Dw. Dresser
66¹/₄w 23¹/₄d 43¹/₂h
Ru. Cherry • Michael's Cherry



JRIM-047-1 Bev. Mirror
25³/₄w 1³/₄d 42¹/₄h

JRIM-051-1 4 Dw. Dresser
50w 23¹/₄d 37h
Br. Maple • Earthtone



JRIM-046 Bev. Mirror
43¹/₂w 1³/₄d 40¹/₄h

JRIM-068 7 Dw. Dresser
66¹/₄w 23¹/₄d 33h
Br. Maple • Onyx



JRIM-045 Bev. Mirror
48³/₄w 1³/₄d 34¹/₂h

JRIM-063 6 Dw. Dresser
66¹/₄w 23¹/₄d 40³/₄h
Ru. Hickory • Earthtone



JRIM-030 Bev. Mirror
40¹/₄w 1³/₄d 34¹/₂h

JRIM-058 9 Dw. Dresser
59w 23¹/₄d 42³/₄h
Ru. Cherry • Manchester



JRIM-046 Bev. Mirror
43¹/₂w 1³/₄d 40¹/₄h

JRIM-059 7 Dw. Dresser
59w 23¹/₄d 34³/₄h
Ru. Cherry • Burnt Umber



JRIM-047-2 Bev. Mirror
25³/₄w 1³/₄d 35¹/₄h

JRIM-061 4 Dw. Vanity Dresser
44w 18¹/₄d 30h

JRIM-016 Vanity Bench
16w 16d 20h
Oak • Mineral (body) / Briar (top)



JRIM-044
Blanket Chest
w/cedar bottom
44¹/₂w 21¹/₂d 25¹/₄h
Red Oak • Briar



BEST SELLER

JRIM-062 Gentleman's Chest
6 Dw., 1 Dr., 2 Shelves
40w 23³/₄d 53³/₄h
Br. Maple • Onyx



BEST SELLER

JRIM-040
6 Dw. Chest
39¹/₂w 23³/₄d 53³/₄h
Red Oak • Briar



JRIM-036
4 Dw. Chest
40w 23³/₄d 50³/₄h
Ru. Hickory • Earthtone



JRIM-024
6 Dw. Lingerie Chest
23³/₄w 23³/₄d 55³/₄h
Ru. Cherry • Burnt Umber



JRIM-023
5 Dw. Lingerie Chest
23³/₄w 23³/₄d 49¹/₄h
Ru. Cherry • Burnt Umber



water tray (N/A w/
sliding top security tray)



sliding top security
tray (1³/₄" depth)



LED touch night
light (N/A on **019**)



power strip
2 outlets / 2 USB

nightstand options



JRIM-019
1 Dw. Nightstand
21¹/₂w 19d 30h
Br. Maple • Earthtone



BEST SELLER

JRIM-021
3 Dw. Nightstand
21¹/₂w 18¹/₄d 30h
Red Oak • Briar



JRIM-021-4
3 Dw. Nightstand
16³/₄w 16¹/₄d 30h
Ru. Cherry • Burnt Umber



JRIM-022
1 Dw., 1 Dr. Nightstand
21¹/₂w 18¹/₄d 30h
Ru. Cherry • Michael's Cherry



JRIM-027 3 Dw. Nightstand
26w 18¹/₄d 30h
Ru. Hickory • Earthtone



JRIM-028 1 Dw., 2 Dr. Nightstand
26w 18¹/₄d 30h
Ru. Cherry • Burnt Umber



JRIM-029-2 2 Dw. Nightstand
26w 18¹/₄d 32¹/₄h
Br. Maple • Onyx

Imperial



JRIM-035
5 Dw. Chest
32½w 23½d 53¼h
Br. Maple • Earthtone



JRIM-052-1
Sliding Door Chifferobe
5 Dw., 2 Dr., 3 Shelves, 1 Adj. Rod
43½w 23½d 74¼h
Br. Maple • Driftwood



JRIM-041-3
Armoire
3 Dw., 2 Dr., 2 Adj Shelves
40½w 24¾d 73¼h
Dbl. dr. op. 33½w 21d 32¾h
Ru. Hickory • Earthtone



JRIM-056-3
Bev. Cheval Mirror
26w 17d 68½h
Ru. Hickory • Earthtone



JRIM-056
Bev. Jewelry Mirror
26w 17d 68½h



JRIM-039
Chest Armoire
6 Dw., 2 Dr., 1 Shelf
40½w 23½d 73¼h
Dbl. dr. op. 33½w 19d 21h
Ru. Cherry • Michael's Cherry



JRIM-041
Armoire
2 Dw., 2 Dr., 2 Adj Shelves
40½w 24¾d 73¼h
Dbl. dr. op. 33½w 21d 42¾h
Ru. Hickory • Earthtone

Ironwood

Available in rustic rough sawn brown maple only.

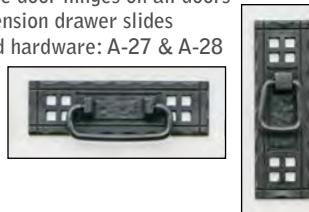


ITI-085 Ironwood Bed, king size
shown in Rustic Rough Sawn Brown Maple with Harvest stain
headboard is 70" tall; footboard is 32" tall



Standard Features

- 1 $\frac{3}{4}$ " solid wood tops
- Solid wood inset end panels
- Metal accents
- All doors and drawers are flush
- Solid maple dovetailed drawer boxes
- Bevel mirrors
- Soft close door hinges on all doors
- Full extension drawer slides
- Standard hardware: A-27 & A-28



Options

- NO UPCHARGE for any hardware choices on hardware board, except for A-70 & A-71
- Choose your own hardware (upcharge)
- For nightstand options, see nightstand page of Ironwood collection
- Pop-out rail secret compartment (upcharge)
- Single or double jewelry slide-outs behind mirrors (upcharge)
- Blum under-mount concealed drawer slides with soft close (upcharge)

Ironwood



JRI-045 Bev. Mirror
50 $\frac{1}{2}$ w 2 $\frac{1}{2}$ d 39 $\frac{1}{2}$ h

JRI-069 9 Dw. Dresser
66w 21 $\frac{3}{4}$ d 43 $\frac{3}{4}$ h
Ru. Rough Sawn Br. Maple • Vintage Antique



JRI-045 Bev. Mirror
50 $\frac{1}{2}$ w 2 $\frac{1}{2}$ d 39 $\frac{1}{2}$ h

JRI-063 6 Dw. Dresser
66w 21 $\frac{3}{4}$ d 40h
Ru. Rough Sawn Br. Maple • Almond



JRI-047-1 Bev. Mirror
28 $\frac{1}{4}$ w 2 $\frac{1}{2}$ d 47h

JRI-051-1 4 Dw. Dresser
50w 21 $\frac{3}{4}$ d 36 $\frac{1}{2}$ h
Ru. Rough Sawn Br. Maple • Antique Slate



JRI-030 Bev. Mirror
42 $\frac{1}{2}$ w 2 $\frac{1}{2}$ d 39 $\frac{1}{2}$ h

JRI-057 9 Dw. Dresser
59w 21 $\frac{3}{4}$ d 43 $\frac{3}{4}$ h
Ru. Rough Sawn Br. Maple • Almond



JRI-030 Bev. Mirror
42 $\frac{1}{2}$ w 2 $\frac{1}{2}$ d 39 $\frac{1}{2}$ h

JRI-058 9 Dw. Dresser
59w 21 $\frac{3}{4}$ d 42 $\frac{3}{4}$ h
Ru. Rough Sawn Br. Maple • Almond

JRI-040 6 Dw. Chest
40w 21 $\frac{3}{4}$ d 54 $\frac{1}{2}$ h
Ru. Rough Sawn Br. Maple • Almond



optional pop-out rail
secret compartment
(1 $\frac{1}{2}$ " depth)



JRI-036 4 Dw. Chest
40w 21 $\frac{3}{4}$ d 50 $\frac{3}{4}$ h
Ru. Rough Sawn Br. Maple • Almond





JRI-056
Bev. Jewelry Mirror
26w 17d 72h

JRI-056-3
Bev. Cheval Mirror
26w 17d 72h
Ru. Rough Sawn Br. Maple •
Rich Tobacco (top) and
Pewter Glaze (body)



JRI-019 1 Dw. Nightstand
21½w 18¾d 29¼h
Ru. Rough Sawn Br. Maple •
Antique Slate



JRI-044
Blanket Chest w/cedar bottom
44w 21¾d 21½h
Ru. Rough Sawn Br. Maple • Almond



JRI-021 3 Dw. Nightstand
20w 17d 29¼h
Ru. Rough Sawn Br. Maple •
Almond



JRI-022 1 Dw., 1 Dr. Nightstand
20w 17d 29¼h
Ru. Rough Sawn Br. Maple •
Almond



JRI-029-2 2 Dw. Nightstand
25w 17d 32½h
Ru. Rough Sawn Br. Maple •
Vintage Antique



JRI-029-3 3 Dw. Nightstand
30w 17d 32½h
Ru. Rough Sawn Br. Maple •
Almond



JRI-062 Gentleman's Chest
6 Dw., 1 Dr., 2 Shelves
40w 21¾d 54½h
Ru. Rough Sawn Br. Maple • Almond



JRI-055
11 Dw. Double Chest
59w 21¾d 54½h
Ru. Rough Sawn Br. Maple • Vintage Antique

nightstand options



water tray (N/A w/
sliding top security tray)



LED touch night
light (N/A on **019**)



power strip
2 outlets / 2 USB



sliding top security
tray (1¾" depth)

Ironwood



JRI-039 Chest Armoire
6 Dw., 2 Dr., 1 Shelf
40w 21³/₄d 71h
Dbl. dr. op. 32¹/₂w 19d 18³/₄h
Ru. Rough Sawn Br. Maple • Antique Slate



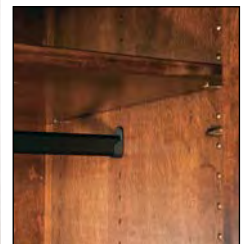
JRI-052-1 Sliding Door Chifferobe
5 Dw., 2 Dr., 3 Shelves, 1 Adj. Rod
44w 21³/₄d 71h
Ru. Rough Sawn Br. Maple •
Rich Tobacco (top) and
Pewter Glaze (body)



JRI-041 Armoire
2 Dw., 2 Dr., 2 Shelves
40w 23d 71h
Dbl. dr. op. 32¹/₂w 20³/₄d 41¹/₂h
Ru. Rough Sawn Br. Maple • Almond



JRI-041-3 Armoire
3 Dw., 2 Dr., 2 Shelves
40w 23d 71h
Dbl. dr. op. 32¹/₂w 20³/₄d 33¹/₄h
Ru. Rough Sawn Br. Maple • Almond



all rods are adjustable

JRI-050 Wardrobe Armoire
1 Dw., 2 Dr.,
1 Adj. Rod & Shelf
44w 23d 71h
I.D.: 37w 20³/₄d 54¹/₄h
Ru. Rough Sawn Br. Maple •
Almond

Kascade

Available in oak, maple, brown maple, cherry, gray elm, hickory, quarter sawn white oak, sap cherry, rustic cherry, rustic hickory, rustic plain sawn white oak, and rustic quarter sawn white oak.



ITF-076, Queen Bed

shown in Brown Maple with Manchester stain
headboard is 57" tall; footboard is 29" tall



Standard Features

- 1" solid wood tops
- Full extension drawer slides
- 1 $\frac{3}{4}$ " x 1 $\frac{3}{4}$ " square post on 4 corners
- All drawers and doors are flush
- Solid maple dovetailed drawer boxes
- Beveled mirror
- Arched front base and half arched doors
- Soft close door hinges on all doors
- Standard hardware: A-57
1 $\frac{3}{4}$ " painted black sq. knob



Options

- NO UPCHARGE for any hardware choices on hardware board, except for A-70 & A-71
- Choose your own hardware (upcharge)
- For nightstand options, see nightstand page of Kascade collection
- Single or double jewelry slide-outs behind mirrors (upcharge)
- Blum under-mount concealed drawer slides with soft close (upcharge)
- Pop-out rail secret compartment NOT AVAILABLE

Kascade



JRK-031
Bev. Crown Mirror
57³/₄w 5¹/₄d 37³/₄h
JRK-073 9 Dw. Dresser
71w 21³/₄d 37³/₄h



JRK-030
Bev. Crown Mirror
41³/₄w 5¹/₄d 37³/₄h
JRK-057 9 Dw. Dresser
58w 21³/₄d 38³/₄h



Jewelry
Slide-out
Behind
Mirror



JRK-049-1
Bev. Mirror
27¹/₂w 2¹/₄d 45³/₄h
JRK-051-1
4 Dw. Dresser
49w 21³/₄d 32¹/₄h



JRK-048
Bev. Mirror
41³/₄w 5¹/₄d 45³/₄h

JRK-049-2
Bev. Mirror
27¹/₂w 38³/₄h
JRK-061
4 Dw. Vanity Dresser
43¹/₄w 17d 30h
JRK-016
Vanity Bench
16w 16d 20h
Sap Cherry •
New Carrington



JRK-059
7 Dw. Dresser
58w 21³/₄d 33³/₄h



JRK-072
7 Dw. Dresser
71w 21³/₄d 33³/₄h



JRK-066
10 Dw. Dresser
65w 21³/₄d 34³/₄h



JRK-058
9 Dw. Dresser
58w 21³/₄d 37³/₄h



JRK-045
Bev. Mirror
49³/₄w 5¹/₄d 37³/₄h



JRK-069
9 Dw. Mule Dresser
65w 21³/₄d 38³/₄h
Br. Maple • Manchester



JRK-055
11 Dw. Double Chest
58w 21³/₄d 48¹/₂h

Kascade



JRK-040
6 Dw. Chest
39w 21³/₄d 48¹/₂h

**BEST
SELLER**



JRK-032
4 Dw. Chest
39w 21³/₄d 34¹/₄h



JRK-032-1
5 Dw. Chest
39w 21³/₄d 40³/₄h



JRK-040-2
4 Dw. Media Chest
open media space replaces
top 2 drawers of JRK-040
39w 21³/₄d 48¹/₂h



JRK-032-2
4 Dw. Media Chest
open media space above
JRK-032 4 Dw. Chest
39w 17d 40³/₄h



JRK-024
6 Dw. Lingerie Chest
22¹/₂w 21³/₄d 50³/₄h



JRK-023
5 Dw. Lingerie Chest
22¹/₂w 21³/₄d 44¹/₄h



JRK-035
5 Dw. Chest
31¹/₂w 21³/₄d 48¹/₂h



JRK-037
7 Dw. Chest-on-Chest
37w 21d 51h
Br. Maple • Manchester



JRK-043 9 Dw. Chest
39w 21³/₄d 49¹/₂h



JRK-044
Blanket Chest w/Cedar Bottom
44w 21³/₄d 21¹/₄h



JRK-038
Bev. Mirror
34³/₄w 5¹/₄d 22h



JRK-042 7 Dw. Chest
39w 21³/₄d 50³/₄h



JRK-051 His & Hers Chest
7 Dw., 2 Dr., 4 Shelves
49w 21³/₄d 48¹/₂h

Kascade

nightstand options



water tray (N/A w/
sliding top security tray)



sliding top security
tray (1¾" depth)



LED touch night
light (N/A on 019)



power strip
2 outlets / 2 USB



JRK-019
1 Dw. Nightstand
21w 18d 28¾h



JRK-021
3 Dw. Nightstand
21w 17d 28¾h



JRK-022
1 Dw., 1 Dr. Nightstand
21w 17d 28¾h



JRK-025
3 Dw. Nightstand
25w 17d 25h



JRK-026
1 Dw., 2 Dr. Nightstand
25w 17d 25h



JRK-027
3 Dw. Nightstand
25w 17d 28¾h



JRK-028
1 Dw., 2 Dr. Nightstand
25w 17d 28¾h



JRK-029
3 Dw. Nightstand
25w 17d 32½h



JRK-029-2
2 Dw. Nightstand
25w 17d 32½h



JRK-062
Gentleman's Chest
6 Dw., 1 Dr., 2 Shelves
39w 21³/₄d 51³/₄h



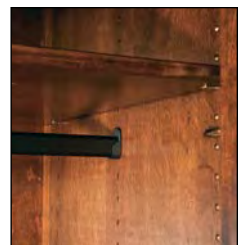
JRK-039
Chest Armoire (2 piece)
6 Dw., 2 Dr., 1 Shelf
41w 24¹/₂d 71¹/₂h
Dbl. dr. op. 30¹/₂w 18¹/₄d 22³/₄h



JRK-052 Chifferobe
4 Dw., 3 Dr., 4 Shelves, 1 Adj. Rod
53w 24¹/₂d 72h
Dbl. dr. op. 25³/₄w 18³/₄d 30¹/₂h



JRK-050 Wardrobe Armoire
1 Dw., 2 Dr., 1 Adj. Rod & Shelf
48¹/₄w 25³/₄d 72h
I.D.: 37¹/₂w 21d 57³/₈h



all rods are adjustable

Kascade



JRK-041-3
 Armoire (2 piece)
 2 Piece, 3 Dw., 2 Dr., 2 Shelves
 41w 25³/₄d 72h
 Dbl. dr. op. 30¹/₂w 20³/₄d 34⁵/₈h



JRK-041
 Armoire (2 piece)
 2 Dw., 2 Dr., 2 Shelves
 41w 25³/₄d 72h
 Dbl. dr. op. 30¹/₂w 20³/₄d 43⁵/₈h



JRK-053
 Mule Chest (2 piece)
 9 Dw., 4 Dr., 6 Shelves
 67w 24¹/₂d 78h
 Dbl. dr. op. 28³/₄w 18³/₄d 37³/₄h



JRK-054
 Deluxe Mule Chest (2 piece)
 8 Dw., 4 Dr., 6 Shelves
 75¹/₂w 25³/₄d 77³/₄h
 Dbl. dr. op. 32¹/₄w 20³/₄d 40⁵/₈h

Lexington

Available in oak, maple, brown maple, cherry, gray elm, hickory, quarter sawn white oak, sap cherry, rustic cherry, rustic hickory, rustic plain sawn white oak, and rustic quarter sawn white oak.



ITL-082 Lexington Bed, queen size shown in Brown Maple with Old Museum stain headboard is 67" tall; footboard is 35" tall



Brown Maple ONLY

Standard Features

- 1" solid wood tops with 1" radius on three edges
- 3" solid posts with raised panels
- Arched raised panel sides and doors
- Slightly raised flush door fronts
- Solid maple dovetailed drawer boxes
- Beveled mirrors
- Full extension drawer slides
- Soft close door hinges on all doors
- Standard hardware - two color choices:



A-11 & A-12



A-13 & A-14

Options

- NO UPCHARGE for any hardware choices on hardware board, except for A-70 & A-71
- Choose your own hardware (upcharge)
- Omit raised panels in posts
- For nightstand options, see nightstand page of Lexington collection
- Pop-out rail secret compartment (upcharge)
- Single or double jewelry slide-outs behind mirrors (upcharge)
- Blum under-mount concealed drawer slides with soft close (upcharge)

Lexington



JRL-030 Bev. Mirror
48w 4d 36³/₄h

JRL-057 9 Dw. Dresser
63w 23¹/₂d 45³/₄h



JRL-047-1 Bev. Mirror
33³/₄w 4d 45h

JRL-051-1 4 Dw. Dresser
54w 23¹/₂d 38¹/₂h



JRL-048 Bev. Mirror
48w 4d 44¹/₂h

JRL-068 7 Dw. Dresser
70w 23¹/₂d 34¹/₄h



JRL-031 Bev. Mirror
64w 4d 36³/₄h

JRL-073 9 Dw. Dresser
76w 23¹/₂d 44³/₄h



JRL-030 Bev. Mirror
48w 4d 36³/₄h

JRL-058 9 Dw. Dresser
63w 23¹/₂d 44³/₄h



JRL-047-2 Bev. Mirror
33³/₄w 4d 38h

JRL-061 4 Dw. Vanity Dresser
49w 18¹/₂d 31¹/₄h

JRL-016 Vanity Bench
16w 16d 20h
Ru. Cherry • Michael's Cherry



Jewelry
Slide-out
Behind
Mirror



Jewelry Drawer

JRL-030 Bev. Mirror
48w 4d 36³/₄h

JRL-067-1
9 Dw. Dresser w/2 Jewelry Dw.
70w 23¹/₂d 44³/₄h

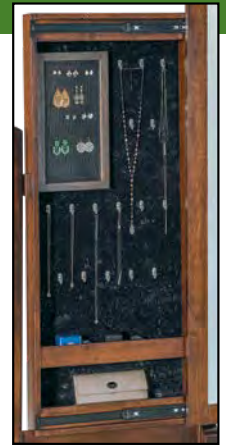


JRL-067
7 Dw. Dresser w/2 Jewelry Dw.
70w 23¹/₂d 35¹/₄h



JRL-045 Bev. Mirror
56w 4d 36¾h

JRL-063 6 Dw. Dresser
70w 23½d 41½h
Br. Maple • Rich Tobacco



JRL-056
Bev. Jewelry Mirror
26w 17d 66½h

JRL-056-3
Bev. Cheval Mirror
26w 17d 66½h
Br. Maple • Rich Tobacco



JRL-059
7 Dw. Dresser
63w 23½d 35¾h



JRL-072
7 Dw. Dresser
76w 23½d 35¾h

**BEST
SELLER**



JRL-030
Bev. Mirror
48w 4d 36¾h

JRL-069 9 Dw. Dresser
70w 23½d 45¾h
Br. Maple • Old Museum



JRL-066
10 Dw. Dresser
70w 23½d 41¾h

Lexington



JRL-032
4 Dw. Chest
44w 23½d 35¾h



JRL-032-1
5 Dw. Chest
44w 23½d 43¾h



JRL-040-2
4 Dw. Media Chest
44w 23½d 56h



JRL-032-2
4 Dw. Media Chest
44w 18½d 43¾h



JRL-040 6 Dw. Chest
44w 23½d 56h



JRL-062 Gentleman's Chest
6 Dw., 1 Dr., 2 Shelves
44w 23½d 56h



JRL-035
5 Dw. Chest
36w 23½d 56h



JRL-036 4 Dw. Chest
44w 23½d 52¼h
Br. Maple • Rich Tobacco



BEST SELLER

JRL-042
7 Dw. Chest
44w 23½d 59½h
Br. Maple • Old Museum



JRL-051-2
2 Dw. Media Chest
54w 18½d 38½h
Br. Maple • Rich Tobacco



optional pop-out rail
secret compartment
(1½" depth)



JRL-055
11 Dw. Double Chest
63w 23½d 56h



JRL-051 His & Hers Chest
7 Dw., 2 Dr., 4 Shelves
54w 23½d 56h

Lexington

nightstand options



water tray (N/A w/
sliding top security tray)



sliding top security
tray (1 3/4" depth)



LED touch night
light (N/A on 019)



power strip
2 outlets / 2 USB



JRL-044
Blanket Chest w/Cedar Bottom
46w 23 1/2d 21 1/2h



JRL-024
6 Dw. Lingerie Chest
27 1/2w 23 1/2d 59 1/2h



JRL-023
5 Dw. Lingerie Chest
27 1/2w 23 1/2d 52h



JRL-019
1 Dw. Nightstand
23 1/4w 20 1/2d 30h



JRL-021
3 Dw. Nightstand
25 1/2w 18 1/2d 30 3/4h



available with
optional
sliding top



JRL-021-4
3 Dw. Nightstand
21w 16 3/2d 30 3/4h
Br. Maple • Rich Tobacco



JRL-022
1 Dw., 1 Dr. Nightstand
25 1/2w 18 1/2d 30 3/4h



JRL-029
3 Dw. Nightstand
25 1/2w 18 1/2d 33 1/4h



JRL-029-2
2 Dw. Nightstand
25 1/2w 18 1/2d 33 1/4h



JRL-029-3
3 Dw. Nightstand
30w 18 1/2d 33 1/4h
Br. Maple • Old Museum



JRL-052-1 Chifferobe
 5 Dw., 2 Dr., 3 Shelves, 1 Adj. Rod
 50w 24¹/₄d 72³/₄h
 Br. Maple • Rich Tobacco



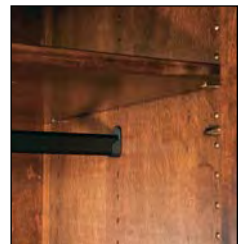
JRL-039 Chest Armoire
 6 Dw., 2 Dr., 1 Shelf
 46w 24¹/₄d 72³/₄h
 Dbl. dr. op. 32¹/₂w 18¹/₂d 18³/₄h



JRL-052 Chifferobe
 4 Dw., 3 Dr., 4 Shelves, 1 Adj. Rod
 56w 24¹/₄d 72³/₄h
 Dbl. dr. op. 24³/₄w 18¹/₂d 26h



JRL-050 Wardrobe Armoire
 1 Dw., 2 Dr., 1 Adj. Rod & Shelf
 50w 25¹/₂d 72³/₄h
 I.D.: 38¹/₂w 20¹/₂d 54h



all rods are adjustable

Lexington



JRL-041-3 Armoire
3 Dw., 2 Dr., 2 Shelves
46w 25¹/₂d 72³/₄h
Dbl. dr. op. 32¹/₂w 20¹/₂" d 33¹/₄h



JRL-053 Mule Chest (2 piece)
9 Dw., 4 Dr., 6 Shelves
72w 24¹/₄d 78¹/₂h
Dbl. dr. op. 27³/₄w 18¹/₂d 31¹/₂h
Br. Maple • Rich Tobacco



JRL-041 Armoire
2 Dw., 2 Dr., 2 Shelves
46w 25¹/₂d 72³/₄h
Dbl. dr. op. 32¹/₂w 20¹/₂" d 41¹/₂h



JRL-054 Deluxe Mule Chest (2 piece)
8 Dw., 4 Dr., 6 Shelves
80w 25¹/₂d 78³/₄h
Dbl. dr. op. 31¹/₄w 20¹/₂d 36¹/₂h
Br. Maple • Rich Tobacco

Liberty

Available in oak, rustic plain sawn white oak, and brown maple only.

Liberty



ITLB-034 Liberty Bed, queen size shown in Brown Maple with FC-48015 Sandstone stain headboard is 48" tall; footboard is 15 $\frac{1}{8}$ " tall



Standard Features

- $\frac{3}{4}$ " solid wood tops
- $\frac{3}{4}$ " solid wood panel sides
- All doors and drawers are flush
- Solid maple dovetailed drawer boxes
- Beveled mirrors
- Full extension drawer slides
- Standard hardware: A-51



Options

- NO UPCHARGE for any hardware choices on hardware board, except for A-70 & A-71
- Choose your own hardware (upcharge)
- For nightstand options, see nightstand page of Liberty collection
- Pop-out rail secret compartment NOT AVAILABLE
- Single or double jewelry slide-outs behind mirrors (upcharge)
- Blum under-mount concealed drawer slides with soft close (upcharge)



JRLB-045-1 Bev. Mirror
50 $\frac{1}{2}$ w 3 $\frac{3}{4}$ d 25 $\frac{1}{4}$ h
shown as wall
mirror option

JRLB-063
6 Dw. Dresser
62 $\frac{1}{2}$ w 19 $\frac{1}{2}$ d 39 $\frac{3}{4}$ h
Br. Maple • Almond



JRLB-045 Bev. Mirror
50 $\frac{1}{2}$ w 3 $\frac{3}{4}$ d 34 $\frac{1}{2}$ h

JRLB-057-1 6 Dw. Dresser
55 $\frac{1}{2}$ w 19 $\frac{1}{2}$ d 39 $\frac{3}{4}$ h
Br. Maple • Sandstone



JRLB-036 4 Dw. Chest
36 $\frac{1}{4}$ w 19 $\frac{1}{2}$ d 49 $\frac{3}{4}$ h
Br. Maple • Almond



JRLB-036-2 4 Dw. Chest
22 $\frac{3}{4}$ w 19 $\frac{1}{2}$ d 49 $\frac{3}{4}$ h
Br. Maple • Manchester



JRLB-036-1 4 Dw. Chest
28 $\frac{3}{4}$ w 19 $\frac{1}{2}$ d 49 $\frac{3}{4}$ h
Br. Maple • Sandstone



JRLB-027-2
1 Dw. Nightstand
22 $\frac{3}{4}$ w 17d 26 $\frac{1}{2}$ h
Br. Maple • Manchester



JRLB-027-1
2 Dw. Nightstand
22 $\frac{3}{4}$ w 17d 29 $\frac{3}{4}$ h
Br. Maple • Dark Knight Gold Base

nightstand options



LED touch
night light



JRLB-032-2
2 Dw. Media Chest
36 $\frac{1}{4}$ w 17d 36 $\frac{1}{4}$ h
Br. Maple • Manchester

Lincoln

Available in oak, maple, brown maple, cherry, gray elm, hickory, quarter sawn white oak, sap cherry, rustic cherry, rustic hickory, rustic plain sawn white oak, and rustic quarter sawn white oak.



ITLN-062 Lincoln Bed, queen size
shown in Sap Cherry with Burnt Umber stain
headboard 53½" tall, footboard 19" tall



Standard Features

- ¾" solid wood tops
- ¾" solid wood panel sides
- All doors and drawers are flush
- Solid maple dovetailed drawer boxes
- Beveled mirrors
- Full extension drawer slides
- Standard hardware: A-66 & A-67



Options

- **NO UPCHARGE** for any hardware choices on hardware board, except for A-70 & A-71
- Choose your own hardware (upcharge)
- For nightstand options, see nightstand page of Lincoln collection
- Single or double jewelry slide-outs behind mirrors (upcharge)
- Pop-out rail secret compartment (upcharge)



JRLN-048 Bev. Mirror
41w 1d 45³/₄h
JRLN-072 7 Dw. Dresser
72¹/₂w 22¹/₂d 34h
Sap Cherry • Manchester



JRLN-048 Bev. Mirror
41w 1d 45³/₄h
JRLN-068 7 Dw. Dresser
66¹/₂w 22¹/₂d 32¹/₂h
Ru. Hickory • Manchester (top)
Limed Oak (body)



JRLN-045
Bev. Mirror
49w 1d 37³/₄h
JRLN-063
6 Dw. Dresser
66¹/₂w 22¹/₂d 40h
Oak • Earthtone



JRLN-030 Bev. Mirror
41w 1d 37³/₄h
JRLN-069 9 Dw. Dresser
66¹/₂w 22¹/₂d 43³/₄h
Sap Cherry • Burnt Umber



JRLN-058
9 Dw. Dresser
59¹/₂w 22¹/₂d 43h
Sap Cherry • Manchester



JRLN-030
Bev. Mirror
41w 1d 37³/₄h
JRLN-057
9 Dw. Dresser
59¹/₂w 22¹/₂d 43³/₄h
Sap Cherry •
Burnt Umber



JRLN-048
Bev. Mirror
41w 1d 45³/₄h
JRLN-059
7 Dw. Dresser
59¹/₂w 22¹/₂d 34h
Sap Cherry •
Manchester



JRLN-047-1
 Bev. Mirror
 26³/₄w 1d 46h

JRLN-051-1
 4 Dw. Dresser
 50¹/₂w 22¹/₂d 36¹/₂h
 Br. Maple •
 Antique Slate



optional pop-out rail
 secret compartment
 (1¹/₂" depth)



JRLN-074 9 Dw. Dresser
 72¹/₂w 22¹/₂d 43³/₄h
 Sap Cherry • Burnt Umber



JRLN-032
 4 Dw. Chest
 40¹/₂w 22¹/₂d 34h
 Br. Maple • Antique Slate



JRLN-032-1
 5 Dw. Chest
 40¹/₂w 22¹/₂d 41¹/₂h
 Br. Maple • Antique Slate



JRLN-040 6 Dw. Chest
 40¹/₂w 22¹/₂d 54³/₄h
 Ru. Hickory • Manchester (top) Limed Oak (body)



JRLN-036 4 Dw. Chest
 40¹/₂w 22¹/₂d 51h
 Oak • Earthtone



JRLN-035 5 Dw. Chest
 33w 22¹/₂d 54³/₄h
 Sap Cherry • Manchester

Lincoln



JRLN-019 1 Dw. Nightstand
23w 20¹/₂d 29¹/₄h
Br. Maple • Antique Slate



JRLN-021 3 Dw. Nightstand
21³/₄w 17³/₄d 29¹/₄h
Ru. Hickory • Manchester • Limed Oak



JRLN-021 3 Dw. Nightstand
21³/₄w 17³/₄d 29¹/₄h
Sap Cherry • Burnt Umber



JRLN-022
1 Dw. 1 Dr.
Nightstand
21³/₄w 17³/₄d 29¹/₄h
Sap Cherry • Manchester



JRLN-025-2
2 Dw. Nightstand
26¹/₂w 17³/₄d 26h
Br. Maple • Antique Slate



JRLN-029-3
3 Dw. Nightstand
30w 17³/₄d 32¹/₂h
Oak • Earthtone



JRLN-052-1
Sliding Door Chifferobe
5 Dw., 2 Dr., 3 Shelves, 1 Adj. Rod
44¹/₂w 22¹/₂d 71h
Sap Cherry • Manchester

nightstand options



water tray (N/A w/
sliding top security tray)



sliding top security
tray (1³/₄" depth)



LED touch night
light (N/A on 019)



power strip
2 outlets / 2 USB



JRLN-044
Blanket Chest w/ Cedar Bottom
44w 21¹/₂d 21h
Br. Maple • Antique Slate

Live Wood

Available in cherry, rustic cherry, walnut and rustic walnut.



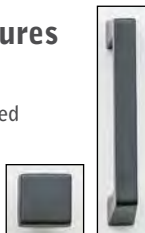
ITLW-068 Live Wood Bed, king size
shown in Rustic Cherry with Vintage Antuque stain
headboard 53" tall, footboard 26" tall



ITLW-068 Live Wood Bed, queen size
shown in Rustic Walnut with Bel Air stain
headboard 53" tall, footboard 26" tall

Standard Features

- 1 $\frac{1}{4}$ " solid wood tops
- $\frac{3}{4}$ " solid side panels
- Solid maple dovetailed drawer boxes
- Beveled mirrors
- Standard hardware: A-63 & A-64



Options

- NO UPCHARGE for any hardware choices on hardware board, except for A-70 & A-71
- Choose your own hardware (upcharge)
- For nightstand options, see nightstand page of Live Wood collection
- Blum under-mount concealed drawer slides with soft close (upcharge)
- Single or double jewelry slide-outs behind mirrors (upcharge)
- Pop-out rail secret compartment (upcharge)

Live Wood

Live Wood



JRW-046 Bev. Mirror
46w 2½d 39¾h
JRW-068 7 Dw. Dresser
66w 21¾d 31h
Ru. Walnut • BelAir



JRW-030 Bev. Mirror
42½w 2½d 33¾h
JRW-057 9 Dw. Dresser
59w 21¾d 42¾h
Ru. Cherry • Vintage Antique

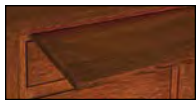


JRW-040 6 Dw. Chest
40w 21¾d 52¾h
Ru. Cherry • Vintage Antique



JRW-035 5 Dw. Chest
32½w 21¾d 52¾h
Ru. Walnut • BelAir

nightstand options



water tray (N/A w/
sliding top security tray)



sliding top security
tray (1¾" depth)



LED touch night
light (N/A on 019)



power strip
2 outlets / 2 USB

JRW-021
3 Dw. Nightstand
20w 17d 27¾h
Ru. Cherry •
Vintage Antique



JRW-029-2
2 Dw. Nightstand
25w 17d 30½h
Ru. Walnut • BelAir

J&R Matison

Available in oak, maple, brown maple, cherry, gray elm, hickory, quarter sawn white oak, sap cherry, rustic cherry, rustic hickory, rustic plain sawn white oak, and rustic quarter sawn white oak.



ITMT-067 Matison Bed, queen size
shown in Rustic Hickory with Charwood stain
headboard is 55" tall; footboard is 30" tall



Standard Features

- 1" solid tops
- Solid wood 3" x 1½" corner posts
- Solid wood side panels
- Soft close door hinges on all doors
- Full extension drawer slides
- Beveled mirrors
- Standard hardware: A-52 – 1" black round knob



Options

- NO UPCHARGE for any hardware choices on hardware board, except for A-70 & A-71
- Choose your own hardware (upcharge)
- For nightstand options, see nightstand page of Matison collection
- Pop-out rail secret compartment (upcharge)
- Single or double jewelry slide-outs behind mirrors (upcharge)
- Blum under-mount concealed drawer slides with soft close (upcharge)

Matson



JRMT-031 Bev. Mirror
62w 32h
JRMT-072 7 Dw. Dresser
74½w 22d 33¾h
Oak • Autumn Oak



JRMT-030 Bev. Mirror
46w 32h
JRMT-069 9 Dw. Mule Dresser
68½w 22d 43½h
Br. Maple • Rich Tobacco



Jewelry
Slide-out
Behind
Mirror



Jewelry Drawer



JRMT-031 Bev. Mirror
62w 32h
JRMT-073 9 Dw. Dresser
74½w 22d 42h
Ru. Hickory • Golden Harvest



JRMT-030 Bev. Mirror
46w 32h
JRMT-067-1
9 Dw. Dresser w/2 Jewelry Dw.
68½w 22d 42h
Br. Maple • Golden Brown



JRMT-030 Bev. Mirror
46w 32h

JRMT-066 10 Dw. Dresser
68 $\frac{1}{2}$ w 22d 39 $\frac{1}{2}$ h
Ru. Cherry • New Carrington



JRMT-047-2 Bev. Mirror
31 $\frac{3}{4}$ w 32 $\frac{1}{2}$ h

JRMT-061 4 Dw. Vanity Dresser
48w 17 $\frac{1}{2}$ d 29 $\frac{3}{4}$ h

JRMT-016 Vanity Bench
16w 16d 20h
Br. Maple • Onyx

JRMT-046
Bev. Mirror
49 $\frac{1}{2}$ w 37 $\frac{1}{2}$ h

JRMT-068
7 Dw. Dresser
68 $\frac{1}{2}$ w 22d 32 $\frac{1}{4}$ h
Ru. QSW0 • Lite Asbury



JRMT-047-1
Bev. Mirror
31 $\frac{3}{4}$ w 39 $\frac{1}{2}$ h

JRMT-051-1
4 Dw. Dresser
52 $\frac{1}{2}$ w 22d 36h
QSW0 • Golden Brown



JRMT-030
Bev. Mirror
46w 32h

JRMT-057
9 Dw. Dresser
61 $\frac{1}{2}$ w 22d 43 $\frac{1}{2}$ h
Ru. QSW0 • Lite Asbury

**BEST
SELLER**



JRMT-030
Bev. Mirror
46w 32h

JRMT-058
9 Dw. Dresser
61 $\frac{1}{2}$ w 22d 42h
Sap Cherry •
Burnt Umber



Matson



JRMT-067 7 Dw. Dresser
w/2 Jewelry Dw.
68 $\frac{1}{2}$ w 22d 33 $\frac{3}{4}$ h
Br. Maple • Golden Brown



JRMT-059 7 Dw. Dresser
61 $\frac{1}{2}$ w 22d 33 $\frac{3}{4}$ h
Sap Cherry • Burnt Umber



JRMT-040-2 4 Dw. Media Chest
42 $\frac{1}{2}$ w 22d 54h
Br. Maple • Golden Brown



JRMT-040 6 Dw. Chest
42 $\frac{1}{2}$ w 22d 54h
Ru. QSWO • Lite Asbury

**BEST
SELLER**



JRMT-035 5 Dw. Chest
35w 22d 54h
Ru. Hickory • Golden Harvest



JRMT-042
7 Dw. Chest
42 $\frac{1}{2}$ w 22d 57 $\frac{1}{4}$ h
Ru. Hickory • Golden Harvest



JRMT-043
9 Dw. Chest
42 $\frac{1}{2}$ w 22d 56h
Ru. QSWO • Lite Asbury



JRMT-062 Gentleman's Chest
6 Dw., 1 Door, 2 Shelves
42 $\frac{1}{2}$ w 22d 54h
Oak • Autumn Oak



JRMT-051-8 6 Dw. Chest
52½w 22d 54h
Ru. Cherry • New Carrington



JRMT-055
11 Dw. Double Chest
61½w 22d 54h
Br. Maple • Rich Tobacco



JRMT-024 6 Dw. Lingerie Chest
26w 22d 57¼h
Sap Cherry • Burnt Umber



JRMT-023 5 Dw. Lingerie Chest
26w 22d 50h
Sap Cherry • Burnt Umber



optional pop-out rail
secret compartment
(1½" depth)



JRMT-044 Blanket Chest w/Cedar Bottom
44w 21d 22h
Ru. QSWO • Lite Asbury



JRMT-032-2 4 Dw. Media Chest
42½w 17½d 41h
QSWO • Golden Brown

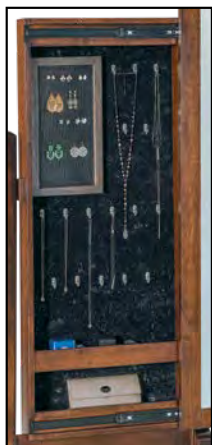


JRMT-032-1 5 Dw. Chest
42½w 22d 41h
QSWO • Golden Brown



JRMT-032 4 Dw. Chest
42½w 22d 33¾h
QSWO • Golden Brown

Matison



JRMT-056
Bev. Jewelry Mirror
26w 17d 65½h



JRMT-056-3
Bev. Cheval Mirror
26w 17d 65½h
Br. Maple • Briar

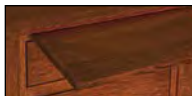


JRMT-051 His & Hers Chest
7 Dw., 2 Dr., 4 Shelves
52½w 22d 54h
QSWO • Golden Brown



JRMT-019
1 Dw. Nightstand
24½w 19d 29h
QSWO • Golden Brown

nightstand options



water tray (N/A w/
sliding top security tray)



sliding top security
tray (1¾" depth)



LED touch night
light (N/A on 019)



power strip
2 outlets / 2 USB



JRMT-021
3 Dw. Nightstand
24½w 17½d 29h
Ru. QSWO • Lite Asbury



JRMT-022
1 Dw., 1 Dr. Nightstand
24½w 17½d 29h
Oak • Autumn Oak



JRMT-025
3 Dw. Nightstand
29w 17½d 25h
Br. Maple • Rich Tobacco



JRMT-026
1 Dw., 2 Dr. Nightstand
29w 17½d 25h
Ru. QSWO • Lite Asbury



JRMT-027
3 Dw. Nightstand
29w 17½d 29h
Sap Cherry • Burnt Umber



JRMT-028
1 Dw., 2 Dr. Nightstand
29w 17½d 29h
Ru. Cherry • New Carrington



JRMT-029
3 Dw. Nightstand
29w 17½d 32¾h
Br. Maple • Golden Brown



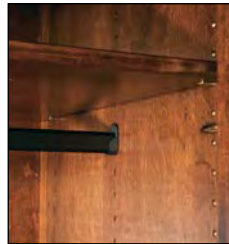
JRMT-029-2
2 Dw. Nightstand
29w 17½d 32¾h
Ru. Hickory • Golden Harvest



JRMT-039 Chest Armoire
 6 Dw., 2 Dr., 1 Shelf
 43¹/₂w 22¹/₂d 70³/₄h
 Dbl. dr. op. 32¹/₂w 19d 18³/₄h
Sap Cherry • Burnt Umber



optional pop-out rail
 secret compartment
 (1¹/₂" depth)



all rods are adjustable



JRMT-050 Wardrobe Armoire
 1 Dw., 2 Dr., 1 Adj. Rod, 1 Shelf
 47¹/₂w 24d 70³/₄h
 I.D.: 36¹/₂w 21d 52¹/₂h
Oak • Autumn Oak



JRMT-041 Armoire
 2 Dw., 2 Dr., 2 Shelves
 43¹/₂w 24d 70³/₄h
 Dbl. dr. op. 32¹/₂w 21d 41¹/₂h
Br. Maple • Rich Tobacco



JRMT-041-3 Armoire
 3 Dw., 2 Dr., 2 Shelves
 43¹/₂w 24d 70³/₄h
 Dbl. dr. op. 32¹/₂w 21d 33³/₄h
Br. Maple • Rich Tobacco

Matison



JRMT-052 Chifferobe
4 Dw., 3 Dr., 4 Shelves, 1 Adj. Rod
53¹/₂w 22¹/₂d 70³/₄h
Dbl. dr. op. 24¹⁵/₁₆w 19d 26h
Ru. QSWO • Lite Asbury



JRMT-052-1 Sliding Door Chifferobe
5 Dw., 2 Dr., 3 Shelves, 1 Adj. Rod
47¹/₂"w 22d 70³/₄h
Ru. Cherry • Natural



JRMT-053 Mule Chest (2 piece)
9 Dw., 4 Dr., 6 Shelves
69¹/₂w 22¹/₂d 76¹/₄h
Dbl. dr. op. 27⁷/₈w 19d 31¹/₂h
Ru. Cherry • New Carrington



JRMT-054 Deluxe Mule Chest (2 piece)
8 Dw., 4 Dr., 6 Shelves
77³/₄w 24d 76h
Dbl. dr. op. 31¹/₄w 21d 36¹/₂h
Br. Maple • Golden Brown

Monarch

Available in oak, maple, brown maple, cherry, gray elm, hickory, quarter sawn white oak, sap cherry, rustic cherry, rustic hickory, rustic plain sawn white oak, and rustic quarter sawn white oak.

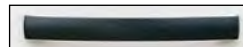


ITM0-033 Monarch Bed, queen size
shown in Oak with Sandstone stain
headboard 50" tall, footboard 19½" tall



Standard Features

- 1¼" solid wood tops
- Blum under-mount concealed drawer slide with soft close
- Solid maple dovetailed drawer boxes
- Beveled mirrors
- Soft close door hinges on all doors
- Standard hardware: A-72 & A-73



Options

- NO UPCHARGE for any hardware choices on hardware board, except for A-70 & A-71
- Choose your own hardware (upcharge)
- For nightstand options, see nightstand page of Monarch collection
- Pop-out rail secret compartment NOT AVAILABLE
- Single or double jewelry slide-outs behind mirrors (upcharge)

Monarch



JRM0-046
Bev. Mirror
50½w 2½d 39½h

JRM0-068
7 Dw. Dresser
66½w 22d 35h
Red Oak • Sandstone



JRM0-045 Bev. Mirror
55w 2½d 34h

JRM0-069 9 Dw. Dresser
66½w 22d 43½h
Br. Maple • Sandstone



JRM0-040-3
5 Dw. Chest
40½w 22d 51¼h
Br. Maple • Sandstone



JRM0-035
5 Dw. Chest
33w 22d 51¼h
Red Oak • Sandstone



JRM0-051
His & Hers Chest
7 Dw., 2 Dr., 4 Shelves
50½w 22d 51¼h
Red Oak • Mineral

nightstand options



water tray (N/A w/
sliding top security tray)



sliding top security
tray (1¾" depth)



LED touch
night light



power strip
2 outlets / 2 USB



JRM0-021
3 Dw. Nightstand
22½w 17½d 31h
Br. Maple • Sandstone



JRM0-027
3 Dw. Nightstand
27w 17½d 31h
Br. Maple • Sandstone



JRM0-28-1
1 Dw., 1 Dr. Nightstand
27w 17½d 31h
Red Oak • Sandstone



JRM0-44
Blanket Chest w/Cedar Bottom
44w 21d 22h
Br. Maple • Sandstone

Old Classic Sleigh

Available in oak, maple, brown maple, cherry, gray elm, hickory, quarter sawn white oak, sap cherry, rustic cherry, rustic hickory, rustic plain sawn white oak, and rustic quarter sawn white oak.

Old Classic Sleigh



IT0-023 Old Classic Sleigh Bed, queen bed
shown in Quarter Sawn White Oak with Asbury stain
headboard is 58" tall; footboard is 35" tall



Standard Features

- 1" solid wood tops and side panels
- Full extension drawer slides
- All doors and drawers are flush
- Rounded top drawer fronts
- Solid maple dovetailed drawer boxes
- Beveled mirrors
- Soft close door hinges on all doors
- Standard hardware: A-53 1 3/4" wood knob and A-54 1 1/8" wood knob



Options

- NO UPCHARGE for any hardware choices on hardware board, except for A-70 & A-71
- Choose your own hardware (upcharge)
- For nightstand options, see nightstand page of Old Classic Sleigh collection
- Blum under-mount concealed drawer slides with soft close (upcharge)
- Jewelry slide-outs behind swinging mirrors NOT AVAILABLE
- Pop-out rail secret compartment NOT AVAILABLE

Old Classic Sleigh

Old Classic Sleigh

**BEST
SELLER**



JRO-030-3
Bev. Swinging Mirror w/ 3 Dw.
38w 8d 38³/₄h

JRO-058
9 Dw. Dresser
58w 21¹/₂d 42h



JRO-048
Bev. Swinging Mirror
38¹/₂w 37h

JRO-068 7 Dw. Dresser
65w 21¹/₂d 33³/₄h

JRO-030
Bev. Swinging Mirror
41w 37h

JRO-059
7 Dw. Dresser
58w 21¹/₂d 33³/₄h



JRO-038
Small Swinging Mirror
38¹/₂w 20h

JRO-051
His & Hers Chest
10 Dw., 2 Dr., 4 Shelves
49w 21¹/₂d 53¹/₂h



JRO-030-1
Bev. Swinging Mirror
34w 2¹/₂d 36³/₄h

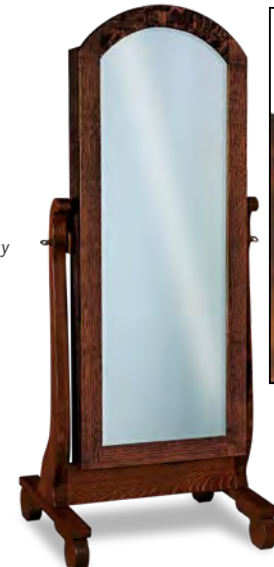
JRO-051-1
4 Dw. Dresser
49w 21¹/₂d 33³/₄h



JRO-030-1
Bev. Swinging Mirror
34w 2¹/₂d 36³/₄h

JRO-061
4 Dw. Vanity Dresser
43w 17¹/₄d 30h

JRO-016
Vanity Bench
16w 16d 20h
QSWO • Michael's Cherry



JRO-056
Bev. Jewelry Mirror
26w 22d 63¹/₂h

JRO-056-3
Bev. Cheval Mirror
26w 22d 63¹/₂h



JRO-069 9 Dw. Mule Dresser
65w 21½d 42h



JRO-055 11 Dw. Double Chest
58w 21½d 53½h



JRO-035 5 Dw. Chest
31¼w 21½d 53½h



JRO-040 6 Dw. Chest
37¾w 21½d 53½h

**BEST
SELLER**



JRO-042 7 Dw. Chest
41¼w 21½d 53½h



JRO-032-2
3 Dw. Media Chest
top 3 drawers as open media space above
JRO-032-1 6 Dw. Chest
41¼w 17½d 42h



JRO-044
Blanket Chest w/Cedar Bottom
48¾w 21¼d 26¼h



JRO-032
5 Dw. Chest
41¼w 21½d 33¾h



JRO-032-1
6 Dw. Chest
41¼w 21½d 42h

Old Classic Sleigh



JRO-024
6 Dw. Lingerie Chest
22 $\frac{1}{4}$ w 21 $\frac{1}{2}$ d 53 $\frac{1}{2}$ h



JRO-023
5 Dw. Lingerie Chest
22 $\frac{1}{4}$ w 21 $\frac{1}{2}$ d 53 $\frac{1}{2}$ h



JRO-062 Gentleman's Chest
7 Dw., 1 Dr., 2 Shelves
41 $\frac{1}{4}$ w 21 $\frac{1}{2}$ d 53 $\frac{1}{2}$ h



JRO-019
1 Dw. Nightstand
20 $\frac{1}{2}$ w 18d 29 $\frac{1}{4}$ h



JRO-021
3 Dw. Nightstand
20 $\frac{1}{2}$ w 17 $\frac{1}{2}$ d 29 $\frac{1}{4}$ h

**BEST
SELLER**



JRO-022
1 Dw., 1 Dr. Nightstand
20 $\frac{1}{2}$ w 17 $\frac{1}{2}$ d 29 $\frac{1}{4}$ h

nightstand options



water tray (N/A w/
sliding top security tray)



sliding top security
tray (1 $\frac{3}{4}$ " depth)



LED touch night
light (N/A on 019)



power strip
2 outlets / 2 USB



JRO-027
3 Dw. Nightstand
25 $\frac{1}{4}$ w 17 $\frac{1}{2}$ d 29 $\frac{1}{4}$ h



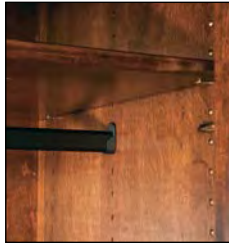
JRO-028
1 Dw., 2 Dr. Nightstand
25 $\frac{1}{4}$ w 17 $\frac{1}{2}$ d 29 $\frac{1}{4}$ h



JRO-029
3 Dw. Nightstand
25 $\frac{1}{4}$ w 17 $\frac{1}{2}$ d 33 $\frac{3}{4}$ h



JRO-029-2
2 Dw. Nightstand
25 $\frac{1}{4}$ w 17 $\frac{1}{2}$ d 33 $\frac{3}{4}$ h



all rods are adjustable

JR0-050 Wardrobe Armoire
2 Dr., 2 Shelves, 1 Adj. Rod
43w 22³/₄d 73¹/₄h
I.D.: 38¹/₂w 19d 64h



JR0-039
Chest Armoire (2 piece)
5 Dw., 2 Dr., 1 Shelf
37³/₄w 22¹/₂d 70¹/₄h
Dbl. dr. op. 30¹/₂w 17³/₄d 19¹/₂h



JR0-041-3 Armoire (2 piece)
5 Dw., 2 Dr., 2 Shelves
37³/₄w 23³/₄d 78¹/₄h
Dbl. dr. op. 30¹/₂w 19³/₄d 27¹/₂h



JR0-041 Armoire (2 Piece)
4 Dw., 2 Dr., 2 Shelves
41¹/₄w 23³/₄d 79¹/₂h
Dbl. dr. op. 34w 19³/₄d 37¹/₂h

Old Classic Sleigh



JR0-052 Chifferobe
4 Dw., 3 Dr., 4 Shelves, 1 Adj. Rod
48w 21½d 73¼h
Dbl. dr. op. 25¾w 16½d 26h



JR0-052-1
Sliding Door Chifferobe
5 Dw., 2 Dr., 3 Shelves, 1 Adj. Rod
42w 21½d 76¾h
QSW0 • Michael's Cherry



JR0-053 Mule Chest (2 piece)
9 Dw., 4 Dr., 6 Shelves
65w 22½d 78¼h
Dbl. dr. op. 29w 17¾d 27¾h



JR0-054 Deluxe Mule Chest (2 piece)
10 Dw., 4 Dr., 6 Shelves
73w 23¾d 79½h
Dbl. dr. op. 32w 19¾d 37h

Orewood

Available in oak, maple, brown maple, cherry, gray elm, hickory, quarter sawn white oak, sap cherry, rustic cherry, rustic hickory, rustic plain sawn white oak, rustic quarter sawn white oak, and rustic rough sawn brown maple.



Orewood

ITOW-083 Orewood Bed, queen size
shown in Oak with Tavern stain
headboard 62" tall, footboard 28" tall



Standard Features

- 1 $\frac{3}{4}$ " solid wood tops
- Solid wood inset end panels
- Metal accents
- Full extension drawer slides
- Solid maple dovetailed drawer boxes
- Soft close hinges on all doors
- Beveled mirrors
- Standard hardware:
A-70 & A-71



Options

- NO UPCHARGE for any hardware choices on hardware board
- Choose your own hardware (upcharge)
- For nightstand options, see nightstand page of Orewood collection
- Pop-out rail secret compartment (upcharge)
- Single or double jewelry slide-outs behind mirrors (upcharge)
- Blum under-mount concealed drawer slides with soft close (upcharge)
- Omit metal accents (deduct)

Orewood

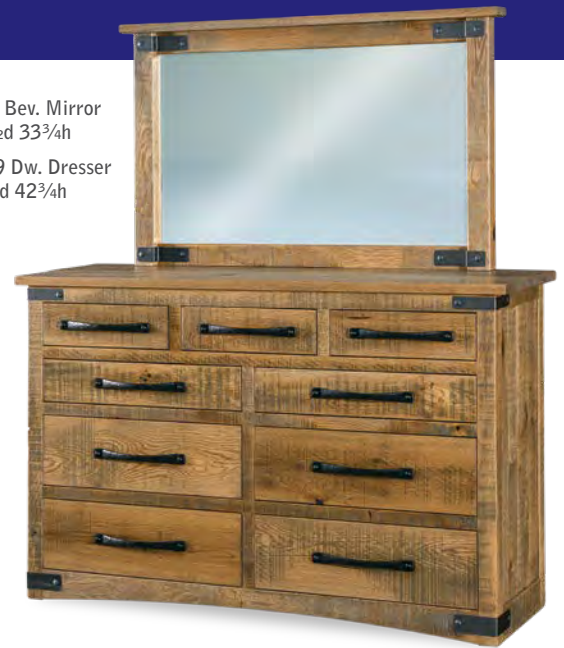
JROW-030 Bev. Mirror
42¹/₂w 2¹/₂d 33³/₄h

JROW-057 9 Dw. Dresser
59w 21³/₄d 42³/₄h
Oak • Tavern



JROW-045 Bev. Mirror
50¹/₂w 2¹/₂d 33³/₄h

JROW-069 9 Dw. Dresser
66w 21³/₄d 42³/₄h



Orewood

JROW-047-1 Bev. Mirror
28³/₄w 2¹/₂d 41¹/₄h

JROW-051-1 4 Dw. Dresser
50w 21³/₄d 35¹/₂h



JROW-030 Bev. Mirror
42¹/₂w 2¹/₂d 33³/₄h

JROW-058 9 Dw. Dresser
59w 21³/₄d 42h
Ru. Sawn Br. Maple • Standstone



JROW-046 Bev. Mirror
46w 2¹/₂d 39¹/₄h

JROW-059 7 Dw. Dresser
59w 21³/₄d 33h
Br. Maple • Almond

JROW-046 Bev. Mirror
46w 2¹/₂d 39¹/₄h

JROW-068 7 Dw. Dresser
66w 21³/₄d 31¹/₂h
Ru. Hickory • Golden Harvest



**BEST
SELLER**

JROW-045 Bev. Mirror
50¹/₂w 2¹/₂d 33³/₄h

JROW-063 6 Dw. Dresser
66w 21³/₄d 39h
Ru. Rough Sawn Br. Maple • Almond





JROW-035 5 Dw. Chest
32 $\frac{1}{2}$ w 21 $\frac{3}{4}$ d 53 $\frac{1}{4}$ h
Br. Maple • Almond



JROW-040 6 Dw. Chest
40w 21 $\frac{3}{4}$ d 53 $\frac{1}{4}$ h
Oak • Tavern



JROW-036 4 Dw. Chest
40w 21 $\frac{3}{4}$ d 50h
Ru. Rough Sawn Br. Maple • Almond

**BEST
SELLER**



JROW-044
Blanket Chest w/Cedar Bottom
44w 21 $\frac{3}{4}$ d 21 $\frac{1}{2}$ h
Oak • Tavern



JROW-044-1
Blanket Chest w/Cedar Bottom
50w 21 $\frac{3}{4}$ d 25 $\frac{1}{2}$ h
standard metal accents removed



JROW-044-4
Blanket Chest w/Cedar Bottom
36w 17d 18 $\frac{1}{2}$ h



JROW-062 Gentlemans Chest
6 Dw. 1 Dr. 2 Shelves
40w 21 $\frac{3}{4}$ d 53 $\frac{1}{4}$ h
Ru. Hickory • Golden Harvest



optional pop-out rail
secret compartment
(1 $\frac{1}{2}$ " depth)



JROW-055 11 Dw. Double Chest
59w 21 $\frac{3}{4}$ d 53 $\frac{1}{4}$ h
standard metal accents removed

Orewood



JROW-025 3 Dw. Nightstand
25w 17d 24¹/₂h
Ru. Hickory • Golden Harvest



JROW-029-3 3 Dw. Nightstand
30w 17d 31¹/₂h
Ru. Sawn Br. Maple • Sandstone



JROW-019 1 Dw. Nightstand
21¹/₂w 18³/₄d 29¹/₄h
Br. Maple • Almond



JROW-018 C-PAP Nightstand
22w 17d 42¹/₄h
Ru. Hickory • Lite Asbury
more info on page 8

NEW



JROW-029-2 2 Dw. Nightstand
25w 17d 30³/₄h
Ru. Rough Sawn Br. Maple • Almond

BEST SELLER



JROW-027 3 Dw. Nightstand
25w 17d 28¹/₄h
standard metal accents removed



JROW-022
1 Dw., 1 Dr. Nightstand
20w 17d 28¹/₄h



JROW-021 3 Dw. Nightstand
20w 17d 28¹/₄h
Oak • Tavern

nightstand options



water tray (N/A w/
sliding top security tray)



LED touch night
light (N/A on 019)



power strip
2 outlets / 2 USB



sliding top security
tray (1³/₄" depth)



all rods are adjustable



JROW-050 Wardrobe Armoire
1 Dw., 1 Dr., 1 Adj. Rod & Shelf
44w 23d 69³/₄h
I.D.: 36¹/₂w 21d 55¹/₂h
Ru. Sawn Br. Maple • Sandstone



JROW-052-1 Sliding Door Chifferobe
5 Dw., 2 Dr., 3 Shelves, 1 Adj. Rod
44w 21³/₄d 69³/₄h



Reno

Available in oak, maple, brown maple, cherry, gray elm, hickory, quarter sawn white oak, sap cherry, rustic cherry, rustic hickory, rustic plain sawn white oak, and rustic quarter sawn white oak.



ITR-086 Reno Bed, queen size
shown in Rustic Hickory with Tavern stain
bed posts are 4½" x 4½";
headboard is 64½" tall; footboard is 31½" tall



Standard Features

- 1" solid wood tops
- 3" solid wood posts
- Arched raised panel sides and doors
- Solid maple dovetailed drawer boxes
- Beveled mirrors
- Full extension drawer slides
- Soft close door hinges on all doors
- Standard hardware: A-39 & A-40



Options

- NO UPCHARGE for any hardware choices on hardware board, except for A-70 & A-71
- Choose your own hardware (upcharge)
- For nightstand options, see nightstand page of Reno collection
- Pop-out rail secret compartment (upcharge)
- Single or double jewelry slide-outs behind mirrors (upcharge)
- Blum under-mount concealed drawer slides with soft close (upcharge)

JRR-030
Bev. Mirror
42³/₄w 35³/₄h

JRR-057
9 Dw. Dresser
61w 22¹/₂d 44¹/₄h
Ru. Hickory • Tavern



JRR-045
Bev. Mirror
50³/₄w 35³/₄h

JRR-069
9 Dw. Dresser
68w 22¹/₂d 44¹/₄h
Br. Maple • Briar



JRR-040
6 Dw. Chest
42w 22¹/₂d 54³/₄h
Ru. Hickory • Tavern



JRR-062 Gentleman's Chest
6 Dw., 1 Dr., 2 Shelves
42w 22¹/₂d 54³/₄h
Br. Maple • Briar



optional pop-out rail
secret compartment
(1¹/₂" depth)

nightstand options



water tray (N/A w/
sliding top security tray)



sliding top security
tray (1³/₄" depth)



LED touch night
light (N/A on **019**)



power strip
2 outlets / 2 USB

JRR-021
3 Dw. Nightstand
24w 18d 29³/₄h
Ru. Hickory • Tavern



JRR-022
1 Dw., 1 Dr.
Nightstand
24w 18d 29³/₄h
Br. Maple • Briar



Sequoyah

Available in oak, maple, brown maple, cherry, gray elm, hickory, quarter sawn white oak, sap cherry, rustic cherry, rustic hickory, rustic plain sawn white oak, and rustic quarter sawn white oak.



ITSQ-084 Sequoyah Bed, queen size
shown in Oak with Carbon stain
headboard is 64" tall; footboard is 39" tall



Standard Features

- 1" solid wood tops
- 3" solid wood posts
- Solid wood inset side panels
- All doors and drawers are flush
- Solid maple dovetailed drawer boxes
- Beveled mirrors
- Full extension drawer slides
- Soft close door hinges on all doors
- Standard hardware: A-29 & A-30



Options

- NO UPCHARGE for any hardware choices on hardware board, except for A-70 & A-71
- Choose your own hardware (upcharge)
- For nightstand options, see nightstand page of Sequoyah collection
- Single or double jewelry slide-outs behind mirrors (upcharge)
- Blum under-mount concealed drawer slides with soft close (upcharge)
- Pop-out rail secret compartment NOT AVAILABLE

Sequoyah



JRSQ-046 Bev. Mirror
47¹/₂w 3³/₄d 45¹/₂h

JRSQ-068 7 Dw. Dresser
67³/₄w 22³/₄d 36¹/₄h



JRSQ-030 Bev. Mirror
44w 3³/₄d 40h

JRSQ-058 9 Dw. Dresser
60¹/₂w 22³/₄d 43³/₄h



Jewelry
Slide-out
Behind
Mirror

JRSQ-030 Bev. Mirror
44w 3³/₄d 40h
JRSQ-066 10 Dw. Dresser
67³/₄w 22³/₄d 40³/₄h



JRSQ-030 Bev. Mirror
44w 3³/₄d 40h
JRSQ-057 9 Dw. Dresser
60¹/₂w 22³/₄d 44³/₄h



JRSQ-030
Bev. Mirror
44w 3³/₄d 40h
JRSQ-069
9 Dw. Dresser
67³/₄w 22³/₄d 44³/₄h



JRSQ-047-2
Bev. Mirror
29³/₄w 3³/₄d 40¹/₂h
JRSQ-061
4 Dw. Vanity Dresser
46¹/₄w 18¹/₄d 30h
JRSQ-016
Vanity Bench
16w 16d 20h
Ru. QSWO • Lite Asbury



JRSQ-047-1 Bev. Mirror
29³/₄w 3³/₄d 47¹/₂h
JRSQ-051-1 4 Dw. Dresser
51¹/₂w 22³/₄d 38¹/₄h



JRSQ-056
Bev. Jewelry Mirror
26w 17d 68h

JRSQ-056-3
Bev. Cheval Mirror
26w 17d 68h
QSWO • Golden Brown



JRSQ-059
7 Dw. Dresser
60¹/₂w 22³/₄d 35³/₄h



JRSQ-040-2 4 Dw. Media Chest
open media space replaces
top 2 drawers of JRSQ-040
41¹/₂w 22³/₄d 54³/₄h



JRSQ-035 5 Dw. Chest
34w 22³/₄d 54¹/₄h



JRSQ-042
7 Dw. Chest
41¹/₂w 22³/₄d 56³/₄h



JRSQ-040
6 Dw. Chest
41¹/₂w 22³/₄d 54³/₄h

Sequoah

nightstand options



water tray (N/A w/
sliding top security tray)



LED touch night
light (N/A on 019)



power strip
2 outlets / 2 USB



sliding top security
tray (1 3/4" depth)



JRSQ-055
11 Dw. Double Chest
60 1/2w 22 3/4d 54 3/4h



JRSQ-024
6 Dw. Lingerie Chest
25w 22 3/4d 56 3/4h



JRSQ-023
5 Dw. Lingerie Chest
25w 22 3/4d 50 1/4h

JRSQ-032-2
4 Dw. Media Chest
open media space above
JRSQ-032 4 Dw. Chest
41 1/2w 18 1/4d 42h



JRSQ-019
1 Dw. Nightstand
20 3/4w 19 1/4d 30h



JRSQ-032
4 Dw. Chest
41 1/2w 22 3/4d 35 3/4h



JRSQ-032-1
5 Dw. Chest
41 1/2w 22 3/4d 42h



JRSQ-021
3 Dw. Nightstand
23 1/2w 18 1/4d 30h



JRSQ-022
1 Dw., 1 Dr. Nightstand
23 1/2w 18 1/4d 30h



JRSQ-029
3 Dw. Nightstand
23 1/2w 18 1/4d 32 3/4h



JRSQ-029-2
2 Dw. Nightstand
22 3/2w 18 1/4d 32 3/4h

**BEST
SELLER**



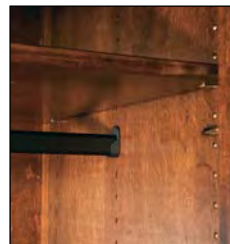
JRSQ-062 Gentleman's Chest
6 Dw., 1 Dr., 2 Shelves,
41¹/₂w 22³/₄d 54¹/₄h



JRSQ-051 His & Hers Chest
7 Dw., 2 Dr., 4 Shelves
51¹/₂w 22³/₄d 54¹/₄h



JRSQ-050 Wardrobe Armoire
1 Dw., 2 Dr., 1 Adj. Rod & Shelf
47¹/₂w 25¹/₄d 72¹/₂h
I.D.: 37¹/₂w 20¹/₂d 54¹/₂h



all rods are adjustable



JRSQ-039 Chest Armoire
6 Dw., 2 Dr., 1 Shelf
43¹/₂w 23³/₄d 72¹/₂h
Dbl. dr. op. 33¹/₂w 18¹/₂d 20¹/₂h

Sequoiah



JRSQ-041-3 Armoire
3 Dw., 2 Dr., 2 Shelves
43¹/₂w 25¹/₄d 72¹/₂h
Dbl. dr. op. 33¹/₂w 20¹/₂d 33¹/₄h



JRSQ-052-1
Sliding Door Chifferobe
5 Dw., 2 Dr., 3 Shelves, 1 Adj. Rod
46¹/₂w 23³/₄d 73³/₄h
QSWO • Golden Brown



JRSQ-041
Armoire
2 Dw., 2 Dr.,
2 Shelves
43¹/₂w 25¹/₄d 72¹/₂h
Dbl. dr. op. 33¹/₂w 20¹/₂d 41¹/₂h



JRSQ-052 Chifferobe
4 Dw., 3 Dr., 4 Shelves, 1 Adj. Rod
53¹/₂w 23³/₄d 72¹/₂h
Dbl. dr. op. 25³/₄w 18¹/₂d 28h

Shaker

Available in oak, maple, brown maple, cherry, gray elm, hickory, quarter sawn white oak, sap cherry, rustic cherry, rustic hickory, rustic plain sawn white oak, and rustic quarter sawn white oak.



ITS-072 Shaker Bed, queen size
shown in Oak with Storm Grey stain
headboard is 48" tall; footboard is 24" tall



Standard Features

- $\frac{3}{4}$ " solid wood tops and side panels
- Full extension drawer slides
- $\frac{3}{4}$ " thick full overlay doors and drawers
- Solid maple dovetailed drawer boxes
- Beveled mirrors
- Tapered legs
- Soft close door hinges on all doors
- Standard hardware: A-55 $1\frac{1}{2}$ " round wood knobs



Options

- NO UPCHARGE for any hardware choices on hardware board, except for A-70 & A-71
- Choose your own hardware (upcharge)
- For nightstand options, see nightstand page of Shaker collection
- Single or double jewelry slide-outs behind mirrors (upcharge)
- Blum under-mount concealed drawer slides with soft close (upcharge)
- Pop-out rail secret compartment NOT AVAILABLE

Shaker



JRS-045
Bev. Mirror
52½w 34h

JRS-066
10 Dw. Dresser
66w 21½d 39¼h
Oak • Storm Grey



JRS-030
Bev. Mirror
44½w 34h

JRS-058
9 Dw. Dresser
59w 21½d 42¼h



Jewelry
Slide-out
Behind
Mirror



JRS-034
Bev. Mirror
58½w 38¾h

JRS-073
9 Dw. Dresser
72w 21½d 42¼h



JRS-033
Bev. Mirror
42w 37h

JRS-069
9 Dw. Dresser
66w 21½d 43¼h

**BEST
SELLER**



JRS-046
Bev. Mirror
48w 39½h

JRS-067
7 Dw. Dresser w/2 Jewelry Dw.
66w 21½d 33½h



Jewelry Drawer



JRS-067-1
9 Dw. Dresser w/2 Jewelry Dw.
66w 21½d 42¼h



JRS-047-2 Bev. Mirror
30³/₄w 34¹/₂h

JRS-061 4 Dw. Vanity Dresser
44w 16¹/₂d 30h

JRS-016 Vanity Bench
16w 16d 20h
Br. Maple • Burnt Umber



JRS-047-1 Bev. Mirror
30³/₄w 41¹/₂h

JRS-051-1
4 Dw. Dresser
50w 21¹/₂d 36h



JRS-068
7 Dw. Dresser
66w 21¹/₂d 32h



JRS-057
9 Dw. Dresser
59w 21¹/₂d 43¹/₄h



JRS-072
7 Dw. Dresser
72w 21¹/₂d 33¹/₂h



JRS-059
7 Dw. Dresser
59w 21¹/₂d 33¹/₂h

Shaker



JRS-040
6 Dw. Chest
40w 21½d 54h

**BEST
SELLER**



JRS-040-2
4 Dw. Media Chest
40w 21½d 54h



JRS-042
7 Dw. Chest
40w 21½d 57½h



JRS-037
7 Dw. Chest-on-Chest
37½w 21½d 56¾h



JRS-043
9 Dw. Chest
40w 21½d 56¾h



JRS-035
5 Dw. Chest
32½w 21½d 54h
Oak • Storm Grey



JRS-055
11 Dw. Double Chest
59w 21½d 54h



JRS-024
6 Dw. Lingerie Chest
23½w 21½d 57½h



JRS-023
5 Dw. Lingerie Chest
23½w 21½d 50h



JRS-044
Blanket Chest w/Cedar Bottom
and False Drawer Fronts
44w 21d 21¼h



JRS-032-2
4 Dw. Media Chest
open media space above
JRS-032 4 Dw. Chest
40w 16½d 40¾h



JRS-062 Gentleman's Chest
6 Dw., 1 Dr., 2 Shelves
40w 21½d 54h



JRS-032-1
5 Dw. Chest
40w 21½d 40¾h



JRS-032
4 Dw. Chest
40w 21½d 33½h

Shaker



JRS-038
Bev. Mirror
42w 28½h

JRS-056-3
Bev. Cheval Mirror
26w 17d 66h
Br. Maple • Lite Asbury



JRS-056
Bev. Jewelry Mirror
26w 17d 66h



JRS-051 His & Hers Chest
7 Dw., 2 Dr., 4 Shelves
50w 21½d 54h



JRS-019
1 Dw. Nightstand
21¼w 18d 28¾h



JRS-021
3 Dw. Nightstand
20w 16½d 28¾h

**BEST
SELLER**



JRS-022
1 Dw., 1 Dr. Nightstand
20w 16½d 28¾h
Oak • Storm Grey



JRS-025
3 Dw. Nightstand
25w 16½d 25h



JRS-026
1 Dw., 2 Dr. Nightstand
25w 16½d 25h

nightstand options



water tray (N/A w/
sliding top security tray)



sliding top security
tray (1¾" depth)



LED touch night
light (N/A on 019)



power strip
2 outlets / 2 USB



JRS-027
Taller 3 Dw. Nightstand
25w 16½d 28¾h



JRS-028
Taller 1 Dw., 2 Dr. Nightstand
25w 16½d 28¾h



JRS-029
3 Dw. Nightstand
25w 16½d 32h



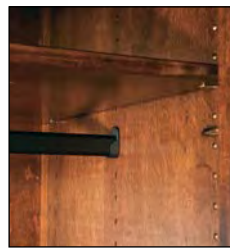
JRS-029-2
2 Dw. Nightstand
25w 16½d 32h



JRS-052 Chifforobe
 4 Dw., 3 Dr., 4 Shelves, 1 Adj. Rod
 51w 22d 71³/₄h
 Dbl. dr. op. 24⁷/₈w 19d 26h



JRS-052-1
 Sliding Door Chifforobe
 5 Dw., 2 Dr., 3 Shelves, 1 Adj. Rod
 45w 22d 71³/₄h
 Br. Maple • Lite Asbury



all rods are adjustable

JRS-050 Wardrobe Armoire
 1 Dw., 2 Dr., 1 Adj. Rod & Shelf
 45w 23¹/₂d 71³/₄h
 I.D.: 39¹/₂w 21d 55¹/₂h



JRS-041 Armoire
 2 Dw., 2 Dr., 2 Shelves
 41w 23¹/₂d 71³/₄h
 Dbl. dr. op. 32¹/₂w 21d 41¹/₂h

Shaker



JRS-039 Chest Armoire
6 Dw., 2 Dr., 1 Shelf
41w 22d 71³/₄h
Dbl. dr. op. 32¹/₂w 19d 18³/₄h



JRS-041-3 Armoire
3 Dw., 2 Dr., 2 Shelves
41w 23¹/₂d 71³/₄h
Dbl. dr. op. 32¹/₂w 21d 33¹/₄h



JRS-054 Deluxe Mule Chest (2 piece)
8 Dw., 4 Dr., 6 Shelves
75w 23¹/₂d 77¹/₄h
Dbl. dr. op. 31¹/₄w 21d 36¹/₂h



JRS-053 Mule Chest (2 piece)
9 Dw., 4 Dr., 6 Shelves
67w 22d 77¹/₂h
Dbl. dr. op. 27³/₄w 19d 31¹/₂h

Simplicity – NEW

Available in oak, brown maple, rough sawn brown maple, and rustic hickory ONLY.

Simplicity



ITD0-041 Dover Bed, queen size shown in Rustic Hickory with Almond stain headboard is 54½" tall; footboard is 15½" tall



Standard Features

- ¾" solid tops
- ¾" solid wood
- 7/8 extension drawer slides
- NO bevel on mirrors
- Standard hardware: A-52



Options

- No options available, except hardware choice
- Choose any hardware choice on hardware board (for upcharge, see hardware pricelist)
- Choose your own hardware NOT AVAILABLE

JRDO-130
Mirror
41½w 30h

JRDO-157
9 Dw. Dresser
58w 18½d 45h
Ru. Hickory • Almond



JRDO-146
Mirror
41½w 38¾h

JRDO-159
7 Dw. Dresser
58w 18½d 36h
Oak • Shadow



JRDO-140
5 Dw. Chest
39w 18½d 54h
Ru. Hickory • Almond



JRDO-132
4 Dw. Chest
39w 18½d 45h
Oak • Shadow



JRDO-121
3 Dw. Nightstand
20½w 14¾d 28¾h
Ru. Hickory • Almond



JRDO-122
1 Dw. Nightstand
20½w 14¾d 28¾h
Oak • Shadow



ITFT-042 Flint Bed, queen size
shown in Oak with Sandstone stain
headboard is 53" tall; footboard is 16¼" tall



Standard Features

- ¾" solid tops
- ¾" solid wood
- 7/8 extension drawer slides
- NO bevel on mirrors
- Standard hardware: A-52



Options

- No options available, except hardware choice
- Choose any hardware choice on hardware board (for upcharge, see hardware pricelist)
- Choose your own hardware NOT AVAILABLE

JRFT-130

Mirror
41½w 30h

JRFT-157

9 Dw. Dresser
58w 18½d 45h
Oak • Sandstone



JRFT-146

Mirror
41½w 38¾h

JRFT-159

7 Dw. Dresser
58w 18½d 36h
Ru. Rough Sawn
Br. Maple • Almond



JRFT-140

5 Dw. Chest
39w 18½d 54h
Oak • Sandstone



JRFT-132

4 Dw. Chest
39w 18½d 45h
Ru. Rough Sawn
Br. Maple • Almond



JRFT-121

3 Dw. Nightstand
20½w 14¾d 28¾h
Oak • Sandstone



JRFT-122

1 Dw. Nightstand
20½w 14¾d 28¾h
Ru. Rough Sawn
Br. Maple • Almond



ITTY-043 Troy Bed, queen size
shown in Rustic Rough Sawn Brown Maple with Harvest stain, 10 sheen
headboard is 52" tall; footboard is 15½" tall



Standard Features

- ¾" solid tops
- ¾" solid wood
- 7/8 extension drawer slides
- NO bevel on mirrors
- Standard hardware: A-52



Options

- No options available, except hardware choice
- Choose any hardware choice on hardware board (for upcharge, see hardware pricelist)
- Choose your own hardware NOT AVAILABLE

JRTY-130

Mirror
41½w 30h

JRTY-157

9 Dw. Dresser
58w 18½d 45h
Ru. Hickory • Tavern



JRTY-146

Mirror
41½w 38¾h

JRTY-159

7 Dw. Dresser
58w 18½d 36h
*Ru. Rough Sawn
Br. Maple • Harvest*



JRTY-140

5 Dw. Chest
39w 18½d 54h
Ru. Hickory • Tavern



JRTY-132

4 Dw. Chest
39w 18½d 45h
*Ru. Rough Sawn
Br. Maple • Harvest*



JRTY-121

3 Dw. Nightstand
20½w 14¾d 28¾h
Ru. Hickory • Tavern



JRTY-122

1 Dw. Nightstand
20½w 14¾d 28¾h
*Ru. Rough Sawn
Br. Maple • Harvest*

Stick Mission

Available in oak, maple, brown maple, cherry, gray elm, hickory, quarter sawn white oak, sap cherry, rustic cherry, rustic hickory, rustic plain sawn white oak, and rustic quarter sawn white oak.



ITSM-070 Stick Mission Bed, queen size
shown in Oak with Charwood stain
headboard is 48" tall; footboard is 24" tall



Standard Features

- 1" Solid tops
- Full extension drawer slides
- Corbels on end
- Beveled mirrors
- Soft close door hinges on all doors
- Standard hardware: A-33 & A-34



Options

- NO UPCHARGE for any hardware choices on hardware board, except for A-70 & A-71
- NO UPCHARGE for solid wood inset end panels
- Choose your own hardware (upcharge)
- For nightstand options, see nightstand page of Stick Mission collection
- Pop-out rail secret compartment (upcharge)
- Single or double jewelry slide-outs behind mirrors (upcharge)
- Blum under-mount concealed drawer slides with soft close (upcharge)

Stick Mission

Stick Mission



JRSM-030
Bev. Mirror
41w 1½d 32h

JRSM-069
9 Dw. Mule Dresser
67w 21½d 43½h
Ru. Cherry •
Michael's Cherry



JRSM-046
Bev. Mirror
44½w 1½d 37½h

JRSM-067
7 Dw. Dresser
w/2 Jewelry Dw.
67w 21½d 33¾h
Oak • Vintage Antique



JRSM-030
Bev. Mirror
41w 1½d 32h

JRSM-057
9 Dw. Dresser
60w 21½d 43½h
Ru. Cherry •
Michael's Cherry

**BEST
SELLER**



JRSM-031
Bev. Mirror
57w 1½d 32h

JRSM-073
9 Dw. Dresser
73w 21½d 42½h
Br. Maple •
Michael's Cherry



JRSM-047-1
Bev. Mirror
26¾w 1½d 39½h

JRSM-051-1
4 Dw. Dresser
51w 21½d 36¾h
QSWO •
Michael's Cherry



JRS-031
Bev. Mirror
60¾w 34h

JRS-048
Bev. Mirror
42w 42h

JRSM-047-2 Bev. Mirror
26¾w 1½d 32½h

JRSM-061 4 Dw. Dresser
46w 17d 30h

JRSM-016 Vanity Bench
16w 16d 20h
Br. Maple • Rich Tobacco



JRSM-067-1
9 Dw. Dresser w/2 Jewelry Dw.
67w 21½d 42¾h
Oak • Vintage Antique



JRSM-058 9 Dw. Dresser
60w 21½d 42¾h
Br. Maple • Michael's Cherry



JRSM-059 7 Dw. Dresser
60w 21½d 33¾h
Br. Maple • Michael's Cherry



JRSM-072 7 Dw. Dresser
73w 21½d 33¾h
Br. Maple • Michael's Cherry

Jewelry
Slide-out
Behind
Mirror



Jewelry Drawer



optional pop-out rail
secret compartment
(1½" depth)



JRSM-055
11 Dw. Double Chest
60w 21½d 54¾h
Oak • Vintage Antique



JRSM-035 5 Dw. Chest
33½w 21½d 54¾h
QSWO • Michael's Cherry



JRSM-040 6 Dw. Chest
41w 21½d 54¾h
Ru. Cherry • Michael's Cherry



Stick Mission

nightstand options



water tray (N/A w/
sliding top security tray)



sliding top security
tray (1 3/4" depth)



LED touch night
light (N/A on 019)



power strip
2 outlets / 2 USB



JRSM-019
1 Dw. Nightstand
23 1/2w 18 3/4d 29h
QSWO • Michael's Cherry



JRSM-021
3 Dw. Nightstand
22 1/2w 17d 29h
Ru. Cherry • Michael's Cherry

**BEST
SELLER**



JRSM-027
3 Dw. Nightstand
27w 17d 29h
Oak • Vintage Antique



JRSM-029-2
2 Dw. Nighstand
27w 17d 32 1/4h
Br. Maple • Michael's Cherry



JRSM-041 Armoire
2 Dw., 2 Dr., 2 Shelves
41w 23d 70 3/4h
Dbl. dr. op. 32 1/2w 20 3/4d 41 1/2h
Br. Maple • Michael's Cherry



JRSM-041-3 Armoire
3 Dw., 2 Dr., 2 Shelves
41w 23d 70 3/4h
Dbl. dr. op. 32 1/2w 20 3/4d 33 1/4h
Br. Maple • Michael's Cherry

Timbra

Available in oak, maple, brown maple, cherry, gray elm, hickory, quarter sawn white oak, sap cherry, rustic cherry, rustic hickory, rustic plain sawn white oak, and rustic quarter sawn white oak.



ITT-093-1 Timbra Bed, king size shown in Rustic Cherry with Earthtone stain posts 6" x 6"; headboard is 78 $\frac{1}{4}$ " tall; footboard is 30" tall Upholstered and shorter headboard also available



Standard Features

- 1 $\frac{3}{4}$ " solid wood tops
- $\frac{3}{4}$ " solid side panels with grooves
- 3" solid wood posts
- Full extension drawer slides
- Beveled mirrors
- Solid maple dovetailed drawer boxes
- Soft close door hinges on all doors
- Standard hardware:



A-9 & A-10



A-13 & A-14

Options

- NO UPCHARGE for any hardware choices on hardware board, except for A-70 & A-71
- Choose your own hardware (upcharge)
- For nightstand options, see nightstand page of Timbra collection
- Pop-out rail secret compartment (upcharge)
- Single or double jewelry slide-outs behind mirrors (upcharge)
- Blum under-mount concealed drawer slides with soft close (upcharge)

Timbra

Timbra



JRT-045 Bev. Mirror
52³/₄w 3d 36¹/₂h

JRT-069 9 Dw. Dresser
69w 22¹/₂d 43¹/₂h
Ru. Cherry • Asbury



JRT-030 Bev. Mirror
44³/₄w 3d 36¹/₂h

JRT-057 9 Dw. Dresser
62w 22¹/₂d 43¹/₂h
Br. Maple • Earthtone



JRT-045 Bev. Mirror
52³/₄w 3d 36¹/₂h

JRT-063 6 Dw. Dresser
69w 22¹/₂d 39³/₄h
Br. Maple • Burnt Umber

**BEST
SELLER**



JRT-048 Bev. Mirror
44³/₄w 3d 44¹/₂h

JRT-067 7 Dw. Dresser
w/2 Jewelry Dw.
69w 22¹/₂d 33³/₄h
Oak • Tavern



Jewelry Drawer



JRT-030 Bev. Mirror
44³/₄w 3d 36¹/₂h

JRT-058 9 Dw. Dresser
62w 22¹/₂d 42³/₄h
Ru. Hickory • Tavern



JRT-045 Bev. Mirror
52³/₄w 3d 36¹/₂h

JRT-073 9 Dw. Dresser
75w 22¹/₂d 42³/₄h
Br. Maple • Asbury



Jewelry
Slide-out
Behind
Mirror



JRT-048 Bev. Mirror
44³/₄w 3d 44¹/₂h

JRT-072 7 Dw. Dresser
75w 22¹/₂d 33³/₄h
Ru. Hickory • Driftwood



JRT-047-1 Bev. Mirror
30¹/₂w 3d 44³/₄h

JRT-051-1 4 Dw. Dresser
53w 22¹/₂d 36¹/₄h
Ru. QSWO • Asbury



JRT-067-1
9 Dw. Dresser w/2 Jewelry Dw.
69w 22¹/₂d 42³/₄h
Oak • Tavern



optional pop-out rail
secret compartment
(1¹/₂" depth)



JRT-059 7 Dw. Dresser
62w 22¹/₂d 33³/₄h
Ru. Hickory • Tavern



JRT-036 4 Dw. Chest
43w 22¹/₂d 50³/₄h
Ru. QSWO • Asbury



JRT-040 6 Dw. Chest
43w 22¹/₂d 54¹/₄h
Br. Maple • Earthtone



JRT-035 5 Dw. Chest
35¹/₂w 22¹/₂d 54¹/₄h
Oak • Tavern



JRT-044
Blanket Chest
w/Cedar Bottom
44w 21d 22³/₄h
Ru. QSWO • Asbury



JRT-044-1
Blanket Chest w/Cedar Bottom
50w 21d 26¹/₄h
Br. Maple • Asbury



JRT-044-4
Blanket Chest
w/Cedar Bottom
36w 18d 19³/₄h
Ru. Hickory • Rich Tobacco



JRT-019
1 Dw. Nightstand
22¹/₂w 20d 28¹/₂h
Ru. QSWO • Asbury



JRT-019-3
1 Dw. Nightstand
30w 20d 31¹/₂h
Br. Maple • Asbury



JRT-021
3 Dw. Nightstand
25w 18d 28¹/₂h
Br. Maple • Earthtone

**BEST
SELLER**



JRT-018
C-PAP Nightstand
26¹/₂w 18d 42h
Br. Maple • Earthtone
more info on page 8

NEW

nightstand options



water tray (N/A w/
sliding top security tray)



sliding top security
tray (1³/₄" depth)



LED touch night
light (N/A on 019)



power strip
2 outlets / 2 USB



JRT-021-4
3 Dw. Nightstand
20³/₄w 16d 28¹/₂h
Oak • Tavern



JRT-022
1 Dw., 1 Dr. Nightstand
25w 18d 28¹/₂h
Br. Maple • Burnt Umber



JRT-022-4
1 Dw., 1 Dr. Nightstand
20³/₄w 16d 28¹/₂h
Ru. Hickory • Driftwood



JRT-029-2
2 Dw. Nightstand
25w 18d 31¹/₂h
Br. Maple • Briar



JRT-029-3
3 Dw. Nightstand
30w 18d 31¹/₂h
Ru. Cherry • Asbury



JRT-055
 11 Dw. Double Chest
 62w 22½d 54¼h
 Ru. Hickory • Tavern



JRT-062 Gentleman's Chest
 6 Dw., 1 Dr., 2 Shelves
 43w 22½d 54¼h
 Br. Maple • Briar



optional pop-out rail
 secret compartment
 (1½" depth)



JRT-051 His & Hers Chest
 7 Dw., 2 Dr., 4 Shelves
 53w 22½d 54¼h
 Ru. Hickory • Driftwood



JRT-052-1
 Sliding Door Chifferobe
 5 Dw., 2 Dr., 3 Shelves, 1 Adj. Rod
 49w 23½d 70½h
 Ru. Hickory • Driftwood

Timbra



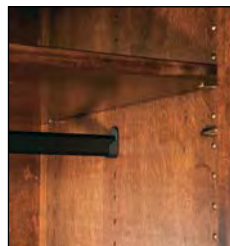
JRT-041-3
Armoire
3 Dw., 2 Dr.,
2 Shelves
45w 25d 70½h
Dbl. dr. op.
32½w 20d 33¼h
Br. Maple • Asbury



JRT-039
Chest Armoire
6 Dw., 2 Dr.,
1 Shelf
45w 23½d 70½h
Ru. Cherry • Asbury



JRT-050 Wardrobe Armoire
1 Dw., 2 Dr., 1 Adj. Rod & Shelf
49w 25d 70½h
Br. Maple • Burnt Umber



all rods are adjustable



JRT-041 Armoire
2 Dw., 2 Dr., 2 Shelves
45w 25d 70½h
Dbl. dr. op. 32½w 20d 41½h
Br. Maple • Asbury

Vandella

Available in rustic rough sawn brown maple only.



ITV-092-1 Vandella Bed, king size
shown in Rustic Rough Sawn Brown Maple with Almond stain
headboard is 72" tall; footboard is 32" tall



Standard Features

- 1 $\frac{3}{4}$ " solid wood tops
- $\frac{3}{4}$ " solid vertical boards on sides
- All doors and drawers are flush
- Solid maple dovetailed drawer boxes
- NO bevel on mirrors
- Full extension drawer slides
- Soft close door hinges on all doors
- Standard hardware: A-46 & A-47



Options

- NO UPCHARGE for any hardware choices on hardware board, except for A-70 & A-71
- Choose your own hardware (upcharge)
- For nightstand options, see nightstand page of Vandella collection
- Pop-out rail secret compartment (upcharge)
- Single or double jewelry slide-outs behind mirrors (upcharge)
- Blum under-mount concealed drawer slides with soft close (upcharge)

Vandella



JRV-030 Mirror
43¹/₂w 1³/₄d 36h

JRV-058 9 Dw. Dresser
64w 23³/₄d 46¹/₂h
Ru. Rough Sawn Br. Maple • Antique Slate



JRV-045 Mirror
51¹/₂w 2¹/₂d 36h

JRV-063 6 Dw. Dresser
71w 23³/₄d 43³/₄h
Ru. Rough Sawn Br. Maple • Vintage Antique

BEST SELLER



JRV-069 9 Dw. Dresser
71w 23³/₄d 47¹/₂h
Ru. Rough Sawn Br. Maple • Tavern



JRV-057 9 Dw. Dresser
64w 23³/₄d 47¹/₂h
Ru. Rough Sawn Br. Maple • Tavern



JRV-040 6 Dw. Chest
45w 23³/₄d 58h
Ru. Rough Sawn Br. Maple • Tavern



JRV-036 4 Dw. Chest
45w 23³/₄d 54³/₄h
Ru. Rough Sawn Br. Maple • Vintage Antique

BEST SELLER



JRV-047-1 Mirror
29¹/₄w 2¹/₂d 43¹/₂h

JRV-051-1 4 Dw. Dresser
55w 23³/₄d 40¹/₄h
Ru. Rough Sawn Br. Maple • Almond

nightstand options



water tray (N/A w/
sliding top security tray)



sliding top security
tray (1 3/4" depth)



LED touch night
light (N/A on 019)



power strip
2 outlets / 2 USB



JRV-019 1 Dw. Nightstand
27w 21 1/2d 31 1/2h
Ru. Rough Sawn Br. Maple •
Vintage Antique



JRV-021 3 Dw. Nightstand
27w 19 1/4d 31 1/2h
Ru. Rough Sawn Br. Maple • Tavern

**BEST
SELLER**



JRV-044 Blanket Chest w/cedar bottom
44w 21 1/4d 23h
Ru. Rough Sawn Br. Maple • Almond



JRV-022 1 Dw., 1 Dr. Nightstand
27w 19 1/4d 31 1/2h
Ru. Rough Sawn Br. Maple •
Vintage Antique



JRV-029-2 2 Dw. Nightstand
27w 19 1/4d 34 1/2h
Ru. Rough Sawn Br. Maple • Tavern



JRV-029-3 3 Dw. Nightstand
30w 19 1/4d 34 1/2h
Ru. Rough Sawn Br. Maple • Tavern



JRV-055 11 Dw. Double Chest
64w 23 3/4d 58h
Ru. Rough Sawn Br. Maple • Almond



JRV-062 Gentleman's Chest
6 Dw., 1 Dr., 2 Shelves
45w 23 3/4d 58h

Ru. Rough Sawn Br. Maple • Tavern

Vandella



JRV-039 Chest Armoire
6 Dw., 2 Dr., 1 Shelf
45w 23³/₄d 74¹/₂h
Dbl. dr. op. 32¹/₂w 19d 18³/₄h
Ru. Rough Sawn Br. Maple •
Earth Tone



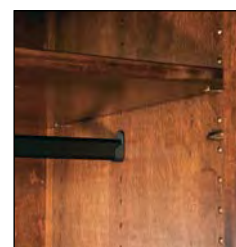
JRV-041-3 Armoire
3 Dw., 2 Dr., 2 Shelves
45w 25¹/₄d 74¹/₂h
Dbl. dr. op. 32¹/₂w 20³/₄d 33¹/₄h
Ru. Rough Sawn Br. Maple • Antique Slate



JRV-041 Armoire
2 Dw., 2 Dr.,
2 Shelves
45w 25¹/₄d 74¹/₂h
Dbl. dr. op. 36¹/₂w 20³/₄d 41¹/₂h
Ru. Rough Sawn Br. Maple • Antique Slate



JRV-050 Wardrobe Armoire
1 Dw., 2 Dr., 1 Adj. Rod & Shelf
49w 25¹/₄d 74¹/₂h
I.D.: 37w 20³/₄d 54¹/₄h
Ru. Rough Sawn Br. Maple • Vintage Antique



all rods are adjustable

Vogen

Available in oak, maple, brown maple, cherry, gray elm, hickory, quarter sawn white oak, sap cherry, rustic cherry, rustic hickory, rustic quarter sawn white oak, and rustic rough sawn brown maple.



ITVG-094 Vogen Bed, king size

shown in Rustic Rough Sawn Brown Maple with Harvest stain
bed posts are 6" x 6"; headboard is 78½" tall, footboard is 33" tall
NOTE: yoke and wheel are optional

Standard Features

- 1¾" solid wood tops
- 3½" solid wood posts
- ¾" solid side panels
- All doors and drawers are flush
- Solid maple dovetailed drawer boxes
- Beveled mirrors
- Full extension drawer slides
- Soft close door hinges on all doors
- Standard hardware:
A-70 & A-71



Options

- NO UPCHARGE for any hardware choices on hardware board
- Choose your own hardware (upcharge)
- For nightstand options, see nightstand page of Vogen collection
- Pop-out rail secret compartment (upcharge)
- Single or double jewelry slide-outs behind mirrors (upcharge)
- Blum under-mount concealed drawer slides with soft close (upcharge)

JRVG-030
Mirror
42½w 36½h

JRVG-057
9 Dw. Dresser
64w 23¾d 45½h
Oak • Carbon



JRVG-045
Mirror
50½w 36½h

JRVG-063
6 Dw. Dresser
71w 23¾d 41¾h
Ru. Rough Sawn
Br. Maple • Harvest



optional pop-out rail
secret compartment
(1½" depth)



JRVG-040
6 Dw. Chest
45w 23¾d 56h
Oak • Carbon



JRVG-036
4 Dw. Chest
45w 23¾d 52¾h
Ru. Rough Sawn Br. Maple • Harvest

nightstand options



water tray (N/A w/
sliding top security tray)



sliding top security
tray (1¾" depth)



LED touch night
light (N/A on **019**)



power strip
2 outlets / 2 USB

JRVG-021
3 Dw. Nightstand
27w 19¾d 30½h
Oak • Carbon



JRVG-029-3
3 Dw. Nightstand
30w 19¾d 33½h
Ru. Rough Sawn
Br. Maple • Harvest



Cheval Mirrors



JRA-056-3
Artesa
27w 18½d 66¾h



JRBC-056-3
Boulder Creek
26w 17¾d 66¾h



JRC-056-3
Carlisle
25¾w 17d 66½h



JRCS-056-3
Chippewa Sleigh
26w 22d 61h



JRDV-056-3
Denver
26w 17d 68h



JRD-056-3
Dumont
26w 17d 66h



JRE-056-3
Empire
26w 17d 67½h



JRFN-056-3
Finland
26w 17d 65½h



JRF-056-3
Flush Mission
26w 17d 65¾h



JRHI-056-3
Heidi
26w 17d 66h



JRH-056-3
Heritage
25¾w 17d 65h



JRHU-056-3
Houston
26w 17d 68h



JRIM-056-3
Imperial
26w 17d 68½h



JRI-056-3
Ironwood
26w 17d 72h



JRL-056-3
Lexington
26w 17d 66½h



JRMT-056-3
Matison
26w 17d 65½h



JRO-056-3
Old Classic Sleigh
26w 22d 63½h



JRSQ-056-3
Sequoyah
26w 17d 68h



JRS-056-3
Shaker
26w 17d 66h

NOTE: All cheval mirrors are available with jewelry storage behind mirror. Change ID# from **056-3** to **056**. Details on individual collection pages.

Hardware Board

Hardware



Hardware Board

A-9: 4424-G10	A-33: D-529-A	A-55: K-40-C
A-10: 4425-G10	A-34: D-527-A	A-56: 972-L-SN
A-11: 4424-WI	A-35: 595-96-SN	A-57: K-53-BL
A-12: 4425-WI	A-36: 595-SN	A-58: D524-BI
A-13: 4424-ORB	A-37: 595-96-BNBDL	A-59: K-558-BL
A-14: 4425-ORB	A-38: 595-BNBDL	A-60: K-58-BL
A-15: 449-96-BNBDL	A-39: 595-96-DBAC	A-62: 36907-ORB
A-16: 449-BNBDL	A-40: 595-DBAC	A-63: 55276-BBR
A-17: 449-96-DBAC	A-41: D-521-W	A-64: 55271-BBR
A-18: 449-DBAC	A-42: D-570-W	A-66: 3910-SN
A-20: 549-96-MB	A-43: K-152-AE	A-67: 449-96-SN
A-23: 53031-G10	A-44: A76209-AE	A-68: 449-SN
A-24: 53029-G10	A-46: K-558-SI	*A-70: 9464305900
A-25: 549-96-BNBDL	A-47: K-58-SI	*A-71: 9464128900
A-26: K3915-BNBDL	A-48: K-2029-LAP	A-72: 549-128-MB
A-27: K-8005	A-49: K-2335-WN	A-73: 549-192-MB
A-28: K-8006	A-50: BP-9041900	A-74: 55368-MB
A-29: BP-81092-BORB	A-51: BP-9041195	
A-30: 81091-BORB	A-52: PA-1217-MB	
A-31: 53031-ORB	A-53: 17-LP	
A-32: 53029-ORB	A-54: 11-LP	

Choose any hardware above at no upcharge. For more styles & color selections, see Buckeye Hardware Catalog.

***NOTE: upcharge when using A-70 & A-71 hardware on any style other than Orewood or Vogen**

J&R

Bedroom Furniture by J&R Woodworking
Beds by Indian Trail Furniture
©2024 J&R Woodworking • 03/11/2024

**QUICK
SHIP**
of Indiana



Boulder Creek
(Rustic Hickory or Oak)



Empire
(Brown Maple or Oak)



Finland
(Brown Maple or Oak)



Houston
(Rus. R-Sawn Br. Maple)



Lexington
(Brown Maple)

