

TROYER

Design
COMPANY



— 2 0 2 6 —

Our goal at Troyer Design Company is to build high quality dining room tables that last a lifetime. All table tops are manufactured in house, giving us the ability to move orders through production much quicker and keeping our lead times down.

This also means that custom size table tops are no problem! We add interlocking glue joints on our 1½" – 1¾" solid tops. Any solid tops that are thicker than 1½" include a v-stabilizer bar, shown on page 3.

Our leaf tables feature high quality wooden slides to make adding leaves a one person job, shown on page 3.

WE BUILD CUSTOM SIZES & PIECES including:

Dining Tables | Butcher Block Tops
Coffee Tables | Decorative Beams
End Tables | Wooden Countertops
Benches | Open Shelving
Bed Frames | Sliding Barn Doors
Fireplace Mantles | Stair Treads
...and Much More!

Wood is a natural commodity and, consequently, may act in ways outside our control. Every piece of wood has unique characteristics and variations, giving each piece of furniture a distinctive look. The building process may be the same, but each item is, (like a fingerprint,) one-of-a-kind.

All knots on rustic furniture will be filled unless there is a request for open knots. All furniture is available in our standard species. Call for other species.

The open grain of most hardwoods will result in some expanding and contracting upon exposure to changes in temperature as well as humidity, even with a protective finish. These fluxuations may cause the wood to crack or have surface checks.

This is a normal reaction and is not considered a flaw.

To minimize its effects of on hardwood furniture, humidity should be in the 35-40% range. Heating/cooling effects on wood can be controlled by keeping it away from any source of heating/cooling. NOTE: Do not store in attic/basement or in direct sunlight/fluorescent light.

Your business is appreciated and we look forward to working with you soon! – Matt Troyer, owner



1611 3rd Rd.
Bremen, IN 46506
ph: 574-209-1312
f: 574-248-0802
matt@troyerdesignco.com

What sets Troyer Design Co apart?

Troyer Design Company is about both "design" and "detail."

We INVITE you to look at the DETAILS!



Our tables with 1½" - 1¾" solid tops have an interlocking glue joint providing a stronger table top.



Live Edge – every piece has its own natural/unique look.



V-Stabilizer bars on all solid tops 1½" and thicker.



Get that rustic look and feel with our Rough Sawn Rustic (real saw marks) – available on most furniture. Our Rough Sawn specie is Brown Maple.



On our leaf tables, we use very high quality wooden table slides with a bigger gear that slide easier than any others on the market. There is no need to have a person at each end to pull the table apart when inserting leaves.

Standard wood species: Rustic Oak, Rustic Cherry, Wormy Maple, Oak, Sap Cherry, Rustic Hickory, Brown Maple, Cherry, Hickory, Elm, Rustic QSWO, Rustic Walnut, QSWO, White Oak, Rustic White Oak, Hard Maple, and Rough Sawn Maple.
(Contact us for other wood species availability.)

Live Edge species: Rustic Red Oak, Red Oak, Rustic Cherry, Cherry, Wormy Maple, Rustic Hickory, Hickory, Brown Maple, Rustic Walnut, Rough Sawn Maple, and Rustic White Oak.

Most furniture is available in Rough Sawn Maple.

We build custom pieces and sizes, call for prices.

Epoxy River Run tables available.

We fill worm holes on Wormy Maple table tops upon request.

Table of Contents

TROYER DESIGN CO.

Table Edge Profiles.....	6	Deep Forest Table	47
Table Top Options	6	Desert Mountain Table	50
Ordering Information	7	Desert Mountain Bench.....	50
Photo Index.....	8-11	Diamond Lake Table.....	51
Best Sellers	12	Distant Beacon Table.....	54
NEW for 2026.....	13	Eagle Trail Table	55
Discontinued for 2026.....	13	Fairfield Table	56
Collections.....	14-15	Fairfield Bench.....	56
		Farmhouse Table	57
Acadia Table	18	Formal Edge Table	58
Adobe Table	19	Fort Worth Table.....	59
Adobe Single.....	20	Glacier Table.....	60
Alpine Table.....	21	Grand Station Table.....	61
Ann Arbor Table	26	Grand Teton Table	62
Aspen Double Table.....	27	Grand Teton Bench	62
Aspen Single Table.....	28	Hidden Beach Table	63
Back Country Table.....	29	High Point Table	66
Beaverton Table.....	32	Lake View Table	67
Bison Ridge Table.....	33	Lake Wood Table.....	68
Bison Ridge Bench	33	Matterhorn Table.....	69
Black Canyon Table	38	Midnight Pass Table	72
Blue Ridge Table	39	Mohican Table	73
Bourbon Double Table	40	Mohican Bench.....	73
Bourbon Single Table	41	Montana Table.....	74
Brazilian Table.....	42	Natural Edge Table.....	75
Cascade Range Table	43	New Haven Table	76
Central Park Table	44	North Shore Table	77
Chinook Valley.....	45	Nova Table	78
Crystal Lake Table.....	46	Nova Bench	78
Crystal Lake Bench	46	Odon Table.....	79

Table of Contents

TROYER DESIGN CO.

Olympic Table	82	SOLID TOP & STEEL BASES	
Ozark Table.....	83	Choose Your Own Sizes.....	112
Ozark Bench	83	UB Series	113
Pacific Table.....	84	X Series.....	114
Phantom Rock Table	85	MHP Series	115
Pictured Rock Table	86	MMHP Series.....	116
Portland Table	87	RHP Series	117
Rainier Double Table	88	SHP Series	118
Rainier Single Table	89	TTHP Series	119
Ripple Creek Table	92	1100 Series.....	120
Silver Meadow Table	93	1200 Series.....	120
Solid View Table	96	1300 Series.....	121
South Bend Table	97	1600 Series.....	121
Stoney Creek Table	98	1750 Series.....	122
Surf Side Desk	99	1800 Series.....	122
Swiss Valley Table	100	1900 Series.....	123
Timber Ridge Table	101	2100 Series.....	123
Tranquil Wave Table	102	2200 Series.....	124
Tucson Table.....	103	2300 Series.....	124
Vegas Table	108	2400 Series.....	125
Vegas Bench.....	108	2600 Series.....	125
Woodhaven Table.....	109	2700 Series.....	125
Yellowstone Table.....	110	Silver Lake Shelf.....	130
Yosemite Table	111		

Table Options

TROYER DESIGN CO.

TABLE EDGE PROFILES



Roundover (5/8")



Mission (1/8" Roundover)



Eased



Chamfer



Waterfall



Bevel



Reverse Chamfer



Reverse Bevel

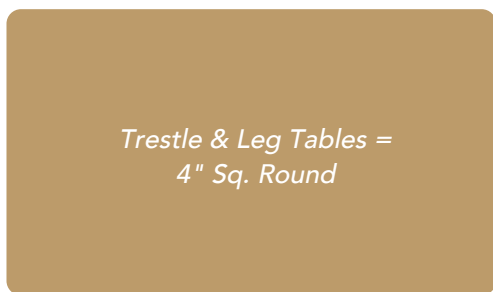
TABLE TOP OPTIONS



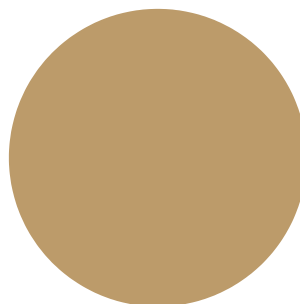
Rectangle



Oval



Square Round



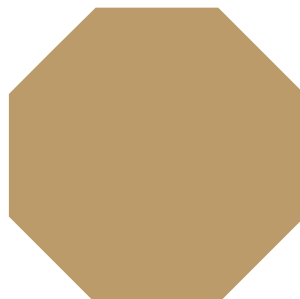
Round



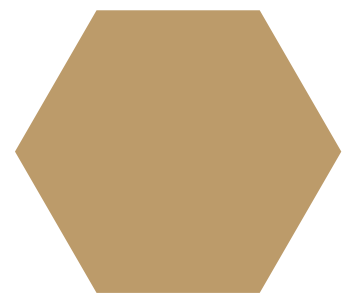
Square



Bow End



Octagon



Hexagon

Ordering Information

TROYER DESIGN CO.

This catalog offers our standard features, but we will also build custom tables to fit your needs. Levelers are standard on all trestle and pedestal bases. Tack glides are standard on leg tables and benches. All tables are standard with self-store; unless it is listed as not available. Round leaf tables are standard with latches.

The following information is needed to complete your order. Please specify unless standard.

- Table Name/Description
 - Size/Dimensions
 - Number of Leaves or Solid Top
 - Table Top Shape
 - Edge Style
 - Wood Specie
 - Top Thickness (1", 1¼", 1½", 1¾")
 - Live Edge
 - Rough Sawn
- NOTE: Live edge leaf tables will have a live edge on both ends of the table.



Photo Index

TROYER DESIGN CO.



Acadia



Adobe



Adobe Single



Alpine



Ann Arbor



Aspen Double



Aspen Single



Back Country



Beaverton



Bison Ridge



Bison Ridge bench



Black Canyon



Blue Ridge



Bourbon Double



Bourbon Single



Brazilian



Cascade Ridge



Central Park



Chinook Valley



Crystal Lake



Crystal Lake bench



Deep Forest



Desert Mountain



Desert Mountain bench

Photo Index

TROYER DESIGN CO.



Diamond Lake



Distant Beacon



Eagle Trail



Fairfield



Fairfield bench



Farmhouse



Formal Edge



Fort Worth



Glacier



Grand Station



Grand Teton



Grand Teton bench



Hidden Beach



High Point



Lake View



Lake Wood



Mattherhorn



Midnight Pass



Mohican



Mohican bench



Montana



Natural Edge



New Haven



North Shore

Photo Index

TROYER DESIGN CO.



Nova



Odon



Olympic



Ozark



Ozark bench



Pacific



Phantom Rock



Pictured Rock



Portland



Rainier Double



Rainier Single



Ripple Creek



Silver Meadow



Solid View



South Bend



Stoney Creek



Surf Side desk



Swiss Valley



Timber Ridge



Tranquil Wave



Tucson



Vegas



Vegas bench



Woodhaven

Photo Index

TROYER DESIGN CO.



Yellowstone



Yosemite



UB Series



X Series



MHP Series



MMHP Series



RHP Series



SHP Series



TTHP Series



1100 Series



1200 Series



1300 Series



1600 Series



1750 Series



1800 Series



1900 Series



2100 Series



2200 Series



2300 Series



2400 Series



2600 Series



2700 Series



Silver Lake shelf

Best Sellers

TROYER DESIGN CO.



Aspen Single



Bison Ridge



Crystal Lake



Diamond Lake



Grand Teton



Olympic



Rainier Single



Stoney Creek



Tucson



Woodhaven



UB Series



X Series



2300 Series

NEW for 2026

TROYER DESIGN CO.



Acadia



Adobe



Adobe Single



Alpine



Bourbon Double



Bourbon Single



Crystal Lake bench



Fairfield



Fairfield bench



Fort Worth



Mohican



Odon



Vegas



Vegas bench

Discontinued for 2026

Coastal Rock
Columbian
Farmhouse Bench
Teton Ridge

Collections

TROYER DESIGN CO.



Acadia Table - page 18



Alpine Table - page 21



Ann Arbor Table - page 26



Back Country Table - page 29



Bison Ridge Table - page 33



Black Canyon Table - page 38



Desert Mountain Table - page 50



Distant Beacon Table - page 54

Collections

TROYER DESIGN CO.



High Point Table - page 66



Matterhorn Table - page 69



Olympic Table - page 82



Rainier Single Table - page 89



Solid View Table - page 96



Tucson Table - page 103



Vegas Table - page 108



Yellowstone Table - page 112

Acadia Table

TROYER DESIGN CO.

Shown: Brown Maple | Harvest 10-sheen | 42" x 84" x 1½"

Tara chairs by FN Chairs







Shown:
Brown Maple |
Harvest
10 sheen |
42" x 84" x 1½"

Acadia Table OPTIONS

- 1" - 1¼" - 1½" - 1¾" top thickness
- up to 4 - 12" leaves
- up to 120" solid top
- self-store available
- 2½" skirt
- no skirt on 1½" - 1¾" solid top
- 30"_H
- 48" width available
- 42"w x 60"L
- 42"w x 72"L
- 42"w x 84"L
- 42"w x 96"L

*Acadia Shape
with mission edge
(standard)*

WOOD SPECIES

- | | | |
|-----------------|------------------|--------------------|
| ✓ Rustic Cherry | ✓ Cherry | ✓ Rustic White Oak |
| ✓ Wormy Maple | ✓ Rustic Hickory | ✓ White Oak |
| ✓ Oak | ✓ Hickory | ✓ QSWO |
| ✓ Sap Cherry | ✓ Rustic QSWO | ✓ Hard Maple |
| ✓ Rustic Oak | ✓ Rustic Walnut | ✓ Rough Sawn Maple |
| ✓ Brown Maple | ✓ Elm | |

TOP SHAPES

- | | |
|--------------------|-----------------|
| ✓ Rectangle Top | Octagon Top |
| ✓ 4" Sq. Round Top | Hexagon Top |
| ✓ Bowed End Top | Square Top |
| Oval Top | ✓ Live Edge Top |
| Round Top | |



Shown:
Brown Maple |
Manchester
10 sheen |
42" x 84" x 1½"

Adobe Table OPTIONS

- 1" - 1¼" - 1½" - 1¾" top thickness
- up to 4 - 12" leaves
- up to 120" solid top
- self-store available
- 2½" skirt
- no skirt on 1½" - 1¾" solid top
- 30"H
- 48" width available
- 42"W x 60"L
- 42"W x 72"L
- 42"W x 84"L
- 42"W x 96"L



WOOD SPECIES

- | | | |
|-----------------|------------------|--------------------|
| ✓ Rustic Cherry | ✓ Cherry | ✓ Rustic White Oak |
| ✓ Wormy Maple | ✓ Rustic Hickory | ✓ White Oak |
| ✓ Oak | ✓ Hickory | ✓ QSWO |
| ✓ Sap Cherry | ✓ Rustic QSWO | ✓ Hard Maple |
| ✓ Rustic Oak | ✓ Rustic Walnut | ✓ Rough Sawn Maple |
| ✓ Brown Maple | ✓ Elm | |

TOP SHAPES

- | | |
|--------------------|-----------------|
| ✓ Rectangle Top | Octagon Top |
| ✓ 4" Sq. Round Top | Hexagon Top |
| ✓ Bowed End Top | Square Top |
| Oval Top | ✓ Live Edge Top |
| Round Top | |

Adobe Single

TROYER DESIGN CO.



Shown:
Brown Maple |
Manchester
10 sheen |
54" ROUND x 1½"

Adobe Single Table OPTIONS

- 1" - 1¼" - 1½" - 1¾" top thickness
- up to 2 - 12" leaves
- solid top
- self-store NOT available
- 2½" skirt
- no skirt on 1½" - 1¾" solid top
- 30"H
- 48" ROUND
- 54" ROUND
- 60" ROUND

WOOD SPECIES

- ✓ Rustic Cherry
- ✓ Wormy Maple
- ✓ Oak
- ✓ Sap Cherry
- ✓ Rustic Oak
- ✓ Brown Maple
- ✓ Cherry
- ✓ Rustic Hickory
- ✓ Hickory
- ✓ Rustic QSWO
- ✓ Rustic Walnut
- ✓ Elm
- ✓ Rustic White Oak
- ✓ White Oak
- ✓ QSWO
- ✓ Hard Maple
- ✓ Rough Sawn Maple

TOP SHAPES

- Rectangle Top
- 4" Sq. Round Top
- Bowed End Top
- Oval Top
- ✓ Round Top
- ✓ Octagon Top
- ✓ Hexagon Top
- ✓ Square Top
- Live Edge Top



Shown:
White Oak |
Bamboo 10-sheen |
36" x 48" x 1"

Alpine Table OPTIONS

- 1" - 1¼" - 1½" top thickness
- up to 4 - 12" leaves
- up to 96" solid top
- self-store available
- 2½" skirt
- 30"H or 36"H
- 48" width available
- 36"W x 48"L
- 36"W x 54"L
- 36"W x 60"L
- 42"W x 60"L
- 42"W x 72"L
- 42"W x 84"L
- 42"W x 96"L

*Alpine Shape
with mission edge
(standard)*

WOOD SPECIES

- | | | |
|-----------------|------------------|--------------------|
| ✓ Rustic Cherry | ✓ Cherry | ✓ Rustic White Oak |
| ✓ Wormy Maple | ✓ Rustic Hickory | ✓ White Oak |
| ✓ Oak | ✓ Hickory | ✓ QSWO |
| ✓ Sap Cherry | ✓ Rustic QSWO | ✓ Hard Maple |
| ✓ Rustic Oak | ✓ Rustic Walnut | ✓ Rough Sawn Maple |
| ✓ Brown Maple | ✓ Elm | |

TOP SHAPES

- | | |
|--------------------|---------------|
| ✓ Rectangle Top | Octagon Top |
| ✓ 4" Sq. Round Top | Hexagon Top |
| ✓ Bowed End Top | ✓ Square Top |
| Oval Top | Live Edge Top |
| Round Top | |

Alpine Table

TROYER DESIGN CO.

Shown: White Oak | Bamboo 10-sheen | 36" x 48" x 1"

Tampa chairs by FN Chairs





Ann Arbor Table

TROYER DESIGN CO.

Shown: Brown Maple | Seashell stain | 42" x 72" x 1¼"

Casey chairs by RH Yoder







Shown:
Brown Maple |
Seashell stain |
42" x 72" x 1 1/4"

Ann Arbor Table OPTIONS

- 1 1/4" oval solid top standard
- 1 1/4" - 1 1/2" - 1 3/4" top thickness
- up to 120" solid top
- no skirt on 1 1/4" - 1 3/4" solid top
- 30"H
- 48" width available
- 42"W x 60"L
- 42"W x 72"L
- 42"W x 84"L
- 42"W x 96"L

WOOD SPECIES

- | | | |
|-----------------|------------------|--------------------|
| ✓ Rustic Cherry | ✓ Cherry | ✓ Rustic White Oak |
| ✓ Wormy Maple | ✓ Rustic Hickory | ✓ White Oak |
| ✓ Oak | ✓ Hickory | ✓ QSWO |
| ✓ Sap Cherry | ✓ Rustic QSWO | ✓ Hard Maple |
| ✓ Rustic Oak | ✓ Rustic Walnut | ✓ Rough Sawn Maple |
| ✓ Brown Maple | ✓ Elm | |

TOP SHAPES

- | | |
|--------------------|-----------------|
| ✓ Rectangle Top | Octagon Top |
| ✓ 4" Sq. Round Top | Hexagon Top |
| ✓ Bowed End Top | Square Top |
| ✓ Oval Top | ✓ Live Edge Top |
| Round Top | |

Aspen Double

TROYER DESIGN CO.



Shown:
Brown Maple |
Almond &
Ebony stain |
42" x 60" x 1"

Aspen Double Table OPTIONS

- 1" - 1¼" - 1½" top thickness
- up to 4 - 12" leaves
- up to 96" solid top
- self-store available
- 2½" skirt
- 30"H
- 48" width available
- 42"W x 60"L
- 42"W x 72"L
- 42"W x 84"L
- 42"W x 96"L

WOOD SPECIES

- ✓ Rustic Cherry
- ✓ Wormy Maple
- ✓ Oak
- ✓ Sap Cherry
- ✓ Rustic Oak
- ✓ Brown Maple
- ✓ Cherry
- ✓ Rustic Hickory
- ✓ Hickory
- ✓ Rustic QSWO
- ✓ Rustic Walnut
- ✓ Elm
- ✓ Rustic White Oak
- ✓ White Oak
- ✓ QSWO
- ✓ Hard Maple
- ✓ Rough Sawn Maple

TOP SHAPES

- ✓ Rectangle Top
- ✓ 4" Sq. Round Top
- ✓ Bowed End Top
- ✓ Oval Top
- ✓ Round Top
- Octagon Top
- Hexagon Top
- Square Top
- Live Edge Top

Aspen Single

TROYER DESIGN CO.

BEST SELLER



Shown:
Brown Maple |
Bamboo &
Ebony stain |
48" ROUND X 1"

Aspen Single Table OPTIONS

- 1" top thickness
- solid top
- up to 2 - 12" leaves
- self-store NOT available
- 2½" skirt
- 30"H
- 42" ROUND
- 48" ROUND
- 54" ROUND
- 42"W X 54"L

Quick Ship DETAILS

- Round top
- 42" ROUND OR
48" ROUND
- 30"H only
- 2 - 12" leaves
- Brown Maple



WOOD SPECIES

- | | | |
|-----------------|------------------|--------------------|
| ✓ Rustic Cherry | ✓ Cherry | ✓ Rustic White Oak |
| ✓ Wormy Maple | ✓ Rustic Hickory | ✓ White Oak |
| ✓ Oak | ✓ Hickory | ✓ QSWO |
| ✓ Sap Cherry | ✓ Rustic QSWO | ✓ Hard Maple |
| ✓ Rustic Oak | ✓ Rustic Walnut | ✓ Rough Sawn Maple |
| ✓ Brown Maple | ✓ Elm | |

TOP SHAPES

- | | |
|--------------------|---------------|
| ✓ Rectangle Top | Octagon Top |
| ✓ 4" Sq. Round Top | Hexagon Top |
| ✓ Bowed End Top | Square Top |
| ✓ Oval Top | Live Edge Top |
| ✓ Round Top | |



Shown:
Rustic Hickory |
Sandstone stain |
36" ROUND X 42"H

Back Country Table OPTIONS

- 1" top thickness
- up to 2-12" leaves
- solid top
- 2½" skirt
- 30"H, 36"H, or 42"H available
- 36" ROUND
- 42" ROUND
- 48" ROUND

WOOD SPECIES

- | | | |
|-----------------|------------------|--------------------|
| ✓ Rustic Cherry | ✓ Cherry | ✓ Rustic White Oak |
| ✓ Wormy Maple | ✓ Rustic Hickory | ✓ White Oak |
| ✓ Oak | ✓ Hickory | ✓ QSWO |
| ✓ Sap Cherry | ✓ Rustic QSWO | ✓ Hard Maple |
| ✓ Rustic Oak | ✓ Rustic Walnut | ✓ Rough Sawn Maple |
| ✓ Brown Maple | ✓ Elm | |

TOP SHAPES

- | | |
|------------------|---------------|
| Rectangle Top | ✓ Octagon Top |
| 4" Sq. Round Top | ✓ Hexagon Top |
| Bowed End Top | ✓ Square Top |
| Oval Top | Live Edge Top |
| ✓ Round Top | |

Back Country Table

TROYER DESIGN CO.

Shown: Rustic Hickory | Sandstone stain | 36" ROUND x 42"H

Tosky bar chairs by RH Yoder





Beaverton

TROYER DESIGN CO.



Shown:
Rustic Walnut |
Natural stain |
42" x 72" x 1"

Beaverton Table OPTIONS

- 1" - 1¼" - 1½" - 1¾" top thickness
- up to 4 - 12" leaves
- up to 120" solid top
- self-store available
- 2½" skirt
- 30"H
- 48" width available
- 42"W x 60"L
- 42"W x 72"L
- 42"W x 84"L
- 42"W x 96"L



WOOD SPECIES

- | | | |
|-----------------|------------------|--------------------|
| ✓ Rustic Cherry | ✓ Cherry | ✓ Rustic White Oak |
| ✓ Wormy Maple | ✓ Rustic Hickory | ✓ White Oak |
| ✓ Oak | ✓ Hickory | ✓ QSWO |
| ✓ Sap Cherry | ✓ Rustic QSWO | ✓ Hard Maple |
| ✓ Rustic Oak | ✓ Rustic Walnut | ✓ Rough Sawn Maple |
| ✓ Brown Maple | ✓ Elm | |

TOP SHAPES

- | | |
|--------------------|-----------------|
| ✓ Rectangle Top | Octagon Top |
| ✓ 4" Sq. Round Top | Hexagon Top |
| ✓ Bowed End Top | Square Top |
| Oval Top | ✓ Live Edge Top |
| Round Top | |

Bison Ridge

TROYER DESIGN CO.

BEST SELLER



Shown:
Rustic Hickory |
Natural 10-sheen |
42" x 66" x 1"

Bison Ridge Table OPTIONS

- 1" - 1¼" - 1½" top thickness
- up to 4 - 12" leaves
- up to 120" solid top
- self-store available
- 2½" skirt
- 30"H, 36"H
- 48" width available
- 42"W x 60"L
- 42"W x 72"L
- 42"W x 84"L
- 42"W x 96"L

Bison Ridge Bench OPTIONS

- 1" top thickness
- up to 4 - 12" leaves
- solid top
- 2½" skirt
- carrying case for leaves (included)
- 13"W x 48"L
- 13"W x 54"L
- 13"W x 60"L
- 13"W x 72"L

Quick Ship DETAILS

- Rectangle top
- 42" x 72"
- eased edge, 1" thick top
- 3" x 3" tapered Shaker legs
- 2 - 12" leaves, self-store
- Brown Maple, Wormy Maple or Oak



WOOD SPECIES

- | | | |
|-----------------|------------------|--------------------|
| ✓ Rustic Cherry | ✓ Cherry | ✓ Rustic White Oak |
| ✓ Wormy Maple | ✓ Rustic Hickory | ✓ White Oak |
| ✓ Oak | ✓ Hickory | ✓ QSWO |
| ✓ Sap Cherry | ✓ Rustic QSWO | ✓ Hard Maple |
| ✓ Rustic Oak | ✓ Rustic Walnut | ✓ Rough Sawn Maple |
| ✓ Brown Maple | ✓ Elm | |

TOP SHAPES

- | | |
|--------------------|-----------------|
| ✓ Rectangle Top | Octagon Top |
| ✓ 4" Sq. Round Top | Hexagon Top |
| ✓ Bowed End Top | ✓ Square Top |
| Oval Top | ✓ Live Edge Top |
| Round Top | |

Bison Ridge Table

TROYER DESIGN CO.

Shown: Rustic Hickory | Natural 10-sheen | 46" x 66" x 1"

Bison Ridge chairs by Artisan Chairs





Black Canyon Table

TROYER DESIGN CO.

Shown: Brown Maple | Harvest stain | 42" x 84" x 1¾"

Birkin chairs by RH Yoder







Shown:
Brown Maple |
Harvest stain |
42" x 84" x 1¾"

Black Canyon Table OPTIONS

- 1" - 1¼" - 1½" - 1¾" top thickness
- up to 4-12" leaves on 84" and 96" lengths
- up to 120" solid top
- 30"H only
- 48" width available
- 42"W x 60"L
- 42"W x 72"L
- 42"W x 84"L
- 42"W x 96"L

WOOD SPECIES

- | | | |
|-----------------|------------------|--------------------|
| ✓ Rustic Cherry | ✓ Cherry | ✓ Rustic White Oak |
| ✓ Wormy Maple | ✓ Rustic Hickory | ✓ White Oak |
| ✓ Oak | ✓ Hickory | ✓ QSWO |
| ✓ Sap Cherry | ✓ Rustic QSWO | ✓ Hard Maple |
| ✓ Rustic Oak | ✓ Rustic Walnut | ✓ Rough Sawn Maple |
| ✓ Brown Maple | ✓ Elm | |

TOP SHAPES

- | | |
|--------------------|-----------------|
| ✓ Rectangle Top | Octagon Top |
| ✓ 4" Sq. Round Top | Hexagon Top |
| ✓ Bowed End Top | Square Top |
| ✓ Oval Top | ✓ Live Edge Top |
| Round Top | |

Blue Ridge

TROYER DESIGN CO.



Shown: Rustic
White Oak |
Bamboo stain |
42" x 72" x 1"

Blue Ridge Table OPTIONS

- 1" - 1¼" - 1½" top thickness
- up to 4 - 12" leaves
- up to 96" solid top
- square round top shape standard
- self-store available
- 2½" skirt
- 30"H
- 48" width available
- 42"W x 60"L
- 42"W x 72"L
- 42"W x 84"L
- 42"W x 96"L



WOOD SPECIES

- | | | |
|-----------------|------------------|--------------------|
| ✓ Rustic Cherry | ✓ Cherry | ✓ Rustic White Oak |
| ✓ Wormy Maple | ✓ Rustic Hickory | ✓ White Oak |
| ✓ Oak | ✓ Hickory | ✓ QSWO |
| ✓ Sap Cherry | ✓ Rustic QSWO | ✓ Hard Maple |
| ✓ Rustic Oak | ✓ Rustic Walnut | ✓ Rough Sawn Maple |
| ✓ Brown Maple | ✓ Elm | |

TOP SHAPES

- | | |
|--------------------|---------------|
| ✓ Rectangle Top | Octagon Top |
| ✓ 4" Sq. Round Top | Hexagon Top |
| ✓ Bowed End Top | ✓ Square Top |
| Oval Top | Live Edge Top |
| Round Top | |

Bourbon Double

TROYER DESIGN CO.



Shown:
Brown Maple |
Almond 10-sheen |
42" x 72" x 1"

Bourbon Double Table OPTIONS

- 1" - 1¼" - 1½" top thickness
- up to 4-12"
- up to 96" solid top
- self-store available
- 2½" skirt
- bow end with waterfall edge standard
- 30"H or 36"H
- 48" width available
- 42"W x 60"L
- 42"W x 72"L
- 42"W x 84"L
- 42"W x 96"L

Quick Ship DETAILS

- Bow end top
- 42" x 72"
- waterfall edge, 1" thick top
- 2 - 12" leaves, self-store
- Brown Maple



WOOD SPECIES

- | | | |
|-----------------|------------------|--------------------|
| ✓ Rustic Cherry | ✓ Cherry | ✓ Rustic White Oak |
| ✓ Wormy Maple | ✓ Rustic Hickory | ✓ White Oak |
| ✓ Oak | ✓ Hickory | ✓ QSWO |
| ✓ Sap Cherry | ✓ Rustic QSWO | ✓ Hard Maple |
| ✓ Rustic Oak | ✓ Rustic Walnut | ✓ Rough Sawn Maple |
| ✓ Brown Maple | ✓ Elm | |

TOP SHAPES

- | | |
|--------------------|---------------|
| ✓ Rectangle Top | Octagon Top |
| ✓ 4" Sq. Round Top | Hexagon Top |
| ✓ Bowed End Top | Square Top |
| ✓ Oval Top | Live Edge Top |
| ✓ Round Top | |

Bourbon Single

TROYER DESIGN CO.



Shown:
Brown Maple |
Almond 10-sheen |
42" ROUND x 1"

Bourbon Single Table OPTIONS

- 1" top thickness
- up to 2-12" leaves
- solid top
- self-store NOT available
- 2½" skirt
- 30"H
- 42" ROUND
- 48" ROUND
- 54" ROUND

Quick Ship DETAILS

- Round top
- 48" ROUND
- waterfall edge,
1" thick top
- 2 - 12" leaves OR solid top
- Brown Maple



WOOD SPECIES

- | | | |
|-----------------|------------------|--------------------|
| ✓ Rustic Cherry | ✓ Cherry | ✓ Rustic White Oak |
| ✓ Wormy Maple | ✓ Rustic Hickory | ✓ White Oak |
| ✓ Oak | ✓ Hickory | ✓ QSWO |
| ✓ Sap Cherry | ✓ Rustic QSWO | ✓ Hard Maple |
| ✓ Rustic Oak | ✓ Rustic Walnut | ✓ Rough Sawn Maple |
| ✓ Brown Maple | ✓ Elm | |

TOP SHAPES

- | | |
|------------------|---------------|
| Rectangle Top | Octagon Top |
| 4" Sq. Round Top | Hexagon Top |
| Bowed End Top | ✓ Square Top |
| ✓ Oval Top | Live Edge Top |
| ✓ Round Top | |



Brazilian Table OPTIONS

- 1" - 1¼" - 1½" - 1¾" top thickness
- up to 4 - 12" leaves
- up to 120" solid top
- self-store available
- 2½" skirt
- 30"H or 36"H
- 48" width available
- 42"W x 60"L
- 42"W x 72"L
- 42"W x 84"L
- 42"W x 96"L

WOOD SPECIES

- | | | |
|-----------------|------------------|--------------------|
| ✓ Rustic Cherry | ✓ Cherry | ✓ Rustic White Oak |
| ✓ Wormy Maple | ✓ Rustic Hickory | ✓ White Oak |
| ✓ Oak | ✓ Hickory | ✓ QSWO |
| ✓ Sap Cherry | ✓ Rustic QSWO | ✓ Hard Maple |
| ✓ Rustic Oak | ✓ Rustic Walnut | ✓ Rough Sawn Maple |
| ✓ Brown Maple | ✓ Elm | |

TOP SHAPES

- | | |
|------------------|---------------|
| ✓ Rectangle Top | Octagon Top |
| 4" Sq. Round Top | Hexagon Top |
| Bowed End Top | ✓ Square Top |
| Oval Top | Live Edge Top |
| Round Top | |

Cascade Range

TROYER DESIGN CO.



Shown:
Live Edge
Rustic Walnut |
Natural stain |
42" x 84" x 1¾"

Cascade Range Table OPTIONS

- Live Edge piece in base is standard
- 1" - 1¼" - 1½" - 1¾" top thickness
- up to 4 - 12" leaves
- up to 120" solid top
- self-store available
- 2½" skirt
- no skirt on 1½" - 1¾" solid top
- 30"H, 36"H
- 48" width available
- 42"W x 60"L
42"W x 72"L
42"W x 84"L
42"W x 96"L



WOOD SPECIES

- | | | |
|-----------------|------------------|--------------------|
| ✓ Rustic Cherry | ✓ Cherry | ✓ Rustic White Oak |
| ✓ Wormy Maple | ✓ Rustic Hickory | ✓ White Oak |
| ✓ Oak | ✓ Hickory | ✓ QSWO |
| ✓ Sap Cherry | ✓ Rustic QSWO | ✓ Hard Maple |
| ✓ Rustic Oak | ✓ Rustic Walnut | ✓ Rough Sawn Maple |
| ✓ Brown Maple | ✓ Elm | |

TOP SHAPES

- | | |
|--------------------|-----------------|
| ✓ Rectangle Top | Octagon Top |
| ✓ 4" Sq. Round Top | Hexagon Top |
| ✓ Bowed End Top | Square Top |
| Oval Top | ✓ Live Edge Top |
| Round Top | |



Shown:
Brown Maple |
Earthtone stain |
48" ROUND x 36" H

Central Park Table OPTIONS

- 1" top thickness
- up to 2 - 12" leaves
- solid top
- self-store NOT available
- 2½" skirt
- 30"H, 36"H, 42"H available
- 42" ROUND
- 48" ROUND
- 54" ROUND

WOOD SPECIES

- | | | |
|-----------------|------------------|--------------------|
| ✓ Rustic Cherry | ✓ Cherry | ✓ Rustic White Oak |
| ✓ Wormy Maple | ✓ Rustic Hickory | ✓ White Oak |
| ✓ Oak | ✓ Hickory | ✓ QSWO |
| ✓ Sap Cherry | ✓ Rustic QSWO | ✓ Hard Maple |
| ✓ Rustic Oak | ✓ Rustic Walnut | ✓ Rough Sawn Maple |
| ✓ Brown Maple | ✓ Elm | |

TOP SHAPES

- | | |
|------------------|---------------|
| Rectangle Top | Octagon Top |
| 4" Sq. Round Top | Hexagon Top |
| Bowed End Top | ✓ Square Top |
| ✓ Oval Top | Live Edge Top |
| ✓ Round Top | |



Shown: Brown Maple |
Shadow stain |
36" x 54" x 1"

Chinook Valley Table OPTIONS

- 1" - 1¼" top thickness
- up to 4 - 12" leaves
- solid top
- self-store available
- 2½" skirt
- 30"H
- 36"W x 48"L
- 36"W x 54"L
- 36"W x 60"L
- 42"W x 60"L
- 42"W x 72"L

WOOD SPECIES

- | | | |
|-----------------|------------------|--------------------|
| ✓ Rustic Cherry | ✓ Cherry | ✓ Rustic White Oak |
| ✓ Wormy Maple | ✓ Rustic Hickory | ✓ White Oak |
| ✓ Oak | ✓ Hickory | ✓ QSWO |
| ✓ Sap Cherry | ✓ Rustic QSWO | ✓ Hard Maple |
| ✓ Rustic Oak | ✓ Rustic Walnut | ✓ Rough Sawn Maple |
| ✓ Brown Maple | ✓ Elm | |

TOP SHAPES

- | | |
|--------------------|-----------------|
| ✓ Rectangle Top | Octagon Top |
| ✓ 4" Sq. Round Top | Hexagon Top |
| ✓ Bowed End Top | Square Top |
| Oval Top | ✓ Live Edge Top |
| Round Top | |



Shown:
Rough Sawn Maple |
Almond 10-sheen |
42" x 72" x 1 1/4"

Crystal Lake Table OPTIONS

- 1" - 1 1/4" - 1 1/2" top thickness
- up to 4 - 12" leaves
- up to 120" solid top
- self-store available
- 2 1/2" skirt
- 30"H
- 48" width available
- 42"W x 60"L
- 42"W x 72"L
- 42"W x 84"L
- 42"W x 96"L

Crystal Lake Bench OPTIONS

- 1" - 1 1/4" top thickness
- up to 4 - 12" leaves
- solid top
- 2 1/2" skirt
- carrying case for leaves (included)
- 13"W x 48"L
- 13"W x 54"L
- 13"W x 60"L
- 13"W x 72"L



Quick Ship DETAILS

- Rectangle top
- 42" x 72"
- eased edge, 1 1/4" thick top
- 4" square leg
- 2 - 12" leaves, self-store
- Rough Sawn Wormy Maple



WOOD SPECIES

- | | | |
|-----------------|------------------|--------------------|
| ✓ Rustic Cherry | ✓ Cherry | ✓ Rustic White Oak |
| ✓ Wormy Maple | ✓ Rustic Hickory | ✓ White Oak |
| ✓ Oak | ✓ Hickory | ✓ QSWO |
| ✓ Sap Cherry | ✓ Rustic QSWO | ✓ Hard Maple |
| ✓ Rustic Oak | ✓ Rustic Walnut | ✓ Rough Sawn Maple |
| ✓ Brown Maple | ✓ Elm | |

TOP SHAPES

- | | |
|--------------------|-----------------|
| ✓ Rectangle Top | Octagon Top |
| ✓ 4" Sq. Round Top | Hexagon Top |
| ✓ Bowed End Top | Square Top |
| Oval Top | ✓ Live Edge Top |
| Round Top | |

Deep Forest

TROYER DESIGN CO.



Shown:
Brown Maple |
Almond stain |
48" ROUND X 1"

Deep Forest Table OPTIONS

- 1" top thickness
- up to 2 - 12" leaves
- solid stop
- self-store NOT available
- 2½" skirt
- 30" H only
- 42" ROUND
- 48" ROUND
- 54" ROUND



WOOD SPECIES

- ✓ Rustic Cherry
- ✓ Wormy Maple
- ✓ Oak
- ✓ Sap Cherry
- ✓ Rustic Oak
- ✓ Brown Maple

- ✓ Cherry
- ✓ Rustic Hickory
- ✓ Hickory
- ✓ Rustic QSWO
- ✓ Rustic Walnut
- ✓ Elm

- ✓ Rustic White Oak
- ✓ White Oak
- ✓ QSWO
- ✓ Hard Maple
- ✓ Rough Sawn Maple

TOP SHAPES

- ✓ Rectangle Top
- ✓ 4" Sq. Round Top
- ✓ Bowed End Top
- ✓ Oval Top
- ✓ Round Top
- ✓ Octagon Top
- ✓ Hexagon Top
- ✓ Square Top
- ✓ Live Edge Top

Desert Mountain Table

TROYER DESIGN CO.

Shown: Rustic Hickory | Natural stain | 42" x 72" x 1"

Emerson chairs by RH Yoder





Desert Mountain

TROYER DESIGN CO.



Shown: Rustic Hickory |
Natural stain | 42" x 72" x 1"

Desert Mountain Table OPTIONS

- 1" - 1¼" - 1½" top thickness
- up to 4 - 12" leaves
- up to 120" solid top
- self-store available
- 2½" skirt
- 30"H, 36"H
- 48" width available
- 42"W x 60"L
- 42"W x 72"L
- 42"W x 84"L
- 42"W x 96"L

Desert Mountain Bench OPTIONS

- 1" top thickness
- up to 4 - 12" leaves
- solid top
- 2½" skirt
- carrying case for leaves (included)
- 13"W x 48"L
- 13"W x 54"L
- 13"W x 60"L
- 13"W x 72"L



WOOD SPECIES

- | | | |
|-----------------|------------------|--------------------|
| ✓ Rustic Cherry | ✓ Cherry | ✓ Rustic White Oak |
| ✓ Wormy Maple | ✓ Rustic Hickory | ✓ White Oak |
| ✓ Oak | ✓ Hickory | ✓ QSWO |
| ✓ Sap Cherry | ✓ Rustic QSWO | ✓ Hard Maple |
| ✓ Rustic Oak | ✓ Rustic Walnut | ✓ Rough Sawn Maple |
| ✓ Brown Maple | ✓ Elm | |

TOP SHAPES

- | | |
|--------------------|-----------------|
| ✓ Rectangle Top | Octagon Top |
| ✓ 4" Sq. Round Top | Hexagon Top |
| ✓ Bowed End Top | ✓ Square Top |
| Oval Top | ✓ Live Edge Top |
| Round Top | |

Diamond Lake

TROYER DESIGN CO.

BEST SELLER



Shown:
Brown Maple |
Harvest stain |
36" x 54" x 1"

Diamond Lake Table OPTIONS

- 1" - 1¼" - 1½" top thickness
- up to 4 - 12" leaves
- up to 96" solid top
- self-store available
- 2½" skirt
- 30" H OR 36" H
- 48" width available
- 36"W x 48"L 42"W x 60"L
- 36"W x 54"L 42"W x 72"L
- 36"W x 60"L 42"W x 84"L
- 42"W x 96"L

Quick Ship DETAILS

- Rectangle top
- 36" x 48" or 36" x 54"
- eased edge, 1" thick top
- 3" round tapered leg
- 2 - 12" leaves
- self-store
- Brown Maple or Oak



WOOD SPECIES

- | | | |
|-----------------|------------------|--------------------|
| ✓ Rustic Cherry | ✓ Cherry | ✓ Rustic White Oak |
| ✓ Wormy Maple | ✓ Rustic Hickory | ✓ White Oak |
| ✓ Oak | ✓ Hickory | ✓ QSWO |
| ✓ Sap Cherry | ✓ Rustic QSWO | ✓ Hard Maple |
| ✓ Rustic Oak | ✓ Rustic Walnut | ✓ Rough Sawn Maple |
| ✓ Brown Maple | ✓ Elm | |

TOP SHAPES

- | | |
|--------------------|-----------------|
| ✓ Rectangle Top | Octagon Top |
| ✓ 4" Sq. Round Top | Hexagon Top |
| ✓ Bowed End Top | ✓ Square Top |
| Oval Top | ✓ Live Edge Top |
| Round Top | |

Distant Beacon Table

TROYER DESIGN CO.

Shown: Rustic Hickory | Natural stain | 42" x 72" x 1"

Keelan chairs by RH Yoder





Distant Beacon

TROYER DESIGN CO.



Shown:
Rustic Hickory |
Natural finish |
42" x 72" x 1"

Distant Beacon Table OPTIONS

- 1" - 1¼" - 1½" top thickness
- up to 4 - 12" leaves
- up to 120" solid top
- self-store available
- arched skirt
- 30"H, 36"H
- 48" width available
- 42"W x 60"L
- 42"W x 72"L
- 42"W x 84"L
- 42"W x 96"L



WOOD SPECIES

- | | | |
|-----------------|------------------|--------------------|
| ✓ Rustic Cherry | ✓ Cherry | ✓ Rustic White Oak |
| ✓ Wormy Maple | ✓ Rustic Hickory | ✓ White Oak |
| ✓ Oak | ✓ Hickory | ✓ QSWO |
| ✓ Sap Cherry | ✓ Rustic QSWO | ✓ Hard Maple |
| ✓ Rustic Oak | ✓ Rustic Walnut | ✓ Rough Sawn Maple |
| ✓ Brown Maple | ✓ Elm | |

TOP SHAPES

- | | |
|--------------------|-----------------|
| ✓ Rectangle Top | Octagon Top |
| ✓ 4" Sq. Round Top | Hexagon Top |
| ✓ Bowed End Top | ✓ Square Top |
| Oval Top | ✓ Live Edge Top |
| Round Top | |



Shown:
Wormy Maple |
Sandstone stain |
42" x 72" x 1½"

Eagle Trail Table OPTIONS

- 1" - 1¼" - 1½" top thickness
- up to 4 - 12" leaves
- up to 120" solid top
- self-store available
- 2½" skirt
- 30"H
- 48" width available
- 42"w x 60"L
- 42"w x 72"L
- 42"w x 84"L
- 42"w x 96"L

WOOD SPECIES

- | | | |
|-----------------|------------------|--------------------|
| ✓ Rustic Cherry | ✓ Cherry | ✓ Rustic White Oak |
| ✓ Wormy Maple | ✓ Rustic Hickory | ✓ White Oak |
| ✓ Oak | ✓ Hickory | ✓ QSWO |
| ✓ Sap Cherry | ✓ Rustic QSWO | ✓ Hard Maple |
| ✓ Rustic Oak | ✓ Rustic Walnut | ✓ Rough Sawn Maple |
| ✓ Brown Maple | ✓ Elm | |

TOP SHAPES

- | | |
|--------------------|-----------------|
| ✓ Rectangle Top | Octagon Top |
| ✓ 4" Sq. Round Top | Hexagon Top |
| ✓ Bowed End Top | Square Top |
| Oval Top | ✓ Live Edge Top |
| Round Top | |



Top: Rustic Walnut |
 Natural stain |
 Base: Red Oak |
 Ebony 10-sheen |
 36" x 54" x 1"

Fairfield Table OPTIONS

- 1" - 1¼" top thickness
- up to 4 - 12" leaves
- solid top
- self-store available
- 2½" skirt
- 30"H
- 36"W x 48"L
- 36"W x 54"L
- 36"W x 60"L
- 42"W x 60"L
- 42"W x 72"L

Fairfield Bench OPTIONS

- 1" top thickness
- up to 4 - 12" leaves
- solid top
- 2½" skirt
- carrying case for leaves (included)
- 13"W x 48"L
- 13"W x 54"L
- 13"W x 60"L
- 13"W x 72"L



WOOD SPECIES

- | | | |
|-----------------|------------------|--------------------|
| ✓ Rustic Cherry | ✓ Cherry | ✓ Rustic White Oak |
| ✓ Wormy Maple | ✓ Rustic Hickory | ✓ White Oak |
| ✓ Oak | ✓ Hickory | ✓ QSWO |
| ✓ Sap Cherry | ✓ Rustic QSWO | ✓ Hard Maple |
| ✓ Rustic Oak | ✓ Rustic Walnut | ✓ Rough Sawn Maple |
| ✓ Brown Maple | ✓ Elm | |

TOP SHAPES

- | | |
|--------------------|---------------|
| ✓ Rectangle Top | Octagon Top |
| ✓ 4" Sq. Round Top | Hexagon Top |
| ✓ Bowed End Top | Square Top |
| Oval Top | Live Edge Top |
| Round Top | |



Shown:
Rustic Red Oak
& Rustic Walnut |
Natural stain |
42" x 96" x 1¾"

Farmhouse Table OPTIONS

- 1" - 1¼" - 1½" - 1¾" top thickness
- up to 4 - 12" leaves
- up to 120" solid top
- self-store available
- 2½" skirt
- no skirt on 1½" - 1¾" solid top
- 30"H only
- 48" width available
- 42"W x 60"L
- 42"W x 72"L
- 42"W x 84"L
- 42"W x 96"L

WOOD SPECIES

- | | | |
|-----------------|------------------|--------------------|
| ✓ Rustic Cherry | ✓ Cherry | ✓ Rustic White Oak |
| ✓ Wormy Maple | ✓ Rustic Hickory | ✓ White Oak |
| ✓ Oak | ✓ Hickory | ✓ QSWO |
| ✓ Sap Cherry | ✓ Rustic QSWO | ✓ Hard Maple |
| ✓ Rustic Oak | ✓ Rustic Walnut | ✓ Rough Sawn Maple |
| ✓ Brown Maple | ✓ Elm | |

TOP SHAPES

- | | |
|--------------------|-----------------|
| ✓ Rectangle Top | Octagon Top |
| ✓ 4" Sq. Round Top | Hexagon Top |
| ✓ Bowed End Top | Square Top |
| Oval Top | ✓ Live Edge Top |
| Round Top | |

Formal Edge

TROYER DESIGN CO.



Shown: Red Oak |
 Gray Burn stain |
 42" x 84" x 1¾" |
5" x 5" legs

Formal Edge Table OPTIONS

- 1" - 1¼" - 1½" - 1¾" top thickness
- up to 4 - 12" leaves
- up to 120" solid top
- 5" square legs on 1½" - 1¾" tops
- 3½" square legs on 1" - 1¼" tops
- 3" skirt
- 30"H
- 48" width available
- 42"w x 60"L
- 42"w x 72"L
- 42"w x 84"L
- 42"w x 96"L



Shown: Red Oak |
 42" x 60" x 1¼" |
3½" x 3½" legs

WOOD SPECIES

- | | | |
|-----------------|------------------|--------------------|
| ✓ Rustic Cherry | ✓ Cherry | ✓ Rustic White Oak |
| ✓ Wormy Maple | ✓ Rustic Hickory | ✓ White Oak |
| ✓ Oak | ✓ Hickory | ✓ QSWO |
| ✓ Sap Cherry | ✓ Rustic QSWO | ✓ Hard Maple |
| ✓ Rustic Oak | ✓ Rustic Walnut | ✓ Rough Sawn Maple |
| ✓ Brown Maple | ✓ Elm | |

TOP SHAPES

- | | |
|------------------|---------------|
| ✓ Rectangle Top | Octagon Top |
| 4" Sq. Round Top | Hexagon Top |
| Bowed End Top | Square Top |
| Oval Top | Live Edge Top |
| Round Top | |



Shown:
Rough Sawn Maple |
Almond 10-sheen |
42" x 84" x 1 1/4"

Fort Worth Table OPTIONS

- 1" - 1 1/4" - 1 1/2" - 1 3/4" top thickness
- up to 4 - 12" leaves
- up to 120" solid top
- self-store available
- 2 1/2" skirt
- no skirt on 1 1/2" - 1 3/4" solid top
- steel base
- 30" H
- 48" width available
- 42" w x 60" L
- 42" w x 72" L
- 42" w x 84" L
- 42" w x 96" L



WOOD SPECIES

- | | | |
|-----------------|------------------|--------------------|
| ✓ Rustic Cherry | ✓ Cherry | ✓ Rustic White Oak |
| ✓ Wormy Maple | ✓ Rustic Hickory | ✓ White Oak |
| ✓ Oak | ✓ Hickory | ✓ QSWO |
| ✓ Sap Cherry | ✓ Rustic QSWO | ✓ Hard Maple |
| ✓ Rustic Oak | ✓ Rustic Walnut | ✓ Rough Sawn Maple |
| ✓ Brown Maple | ✓ Elm | |

TOP SHAPES

- | | |
|--------------------|-----------------|
| ✓ Rectangle Top | Octagon Top |
| ✓ 4" Sq. Round Top | Hexagon Top |
| ✓ Bowed End Top | Square Top |
| Oval Top | ✓ Live Edge Top |
| Round Top | |



Shown:
Rustic Hickory |
Almond stain |
42" ROUND X 1"

Glacier Table OPTIONS

- 1" top thickness
- up to 2 - 12" leaves
- solid stop
- self-store NOT available
- 2½" skirt
- 30"H, 36"H
- 42" ROUND
- 48" ROUND
- 54" ROUND

WOOD SPECIES

- | | | |
|-----------------|------------------|--------------------|
| ✓ Rustic Cherry | ✓ Cherry | ✓ Rustic White Oak |
| ✓ Wormy Maple | ✓ Rustic Hickory | ✓ White Oak |
| ✓ Oak | ✓ Hickory | ✓ QSWO |
| ✓ Sap Cherry | ✓ Rustic QSWO | ✓ Hard Maple |
| ✓ Rustic Oak | ✓ Rustic Walnut | ✓ Rough Sawn Maple |
| ✓ Brown Maple | ✓ Elm | |

TOP SHAPES

- | | |
|------------------|---------------|
| Rectangle Top | Octagon Top |
| 4" Sq. Round Top | Hexagon Top |
| Bowed End Top | ✓ Square Top |
| ✓ Oval Top | Live Edge Top |
| ✓ Round Top | |

Grand Station

TROYER DESIGN CO.



Shown: Rustic
White Oak |
Wicker stain |
42" x 84" x 1¾"
solid top

Grand Station Table OPTIONS

- 1" - 1¼" - 1½" - 1¾" top thickness
- up to 4 - 12" leaves
- up to 120" solid top
- self-store available
- 2½" skirt
- no skirt on 1½" - 1¾" solid tops
- 30"H
- 48" width available
- 42"W x 60"L
- 42"W x 72"L
- 42"W x 84"L
- 42"W x 96"L



WOOD SPECIES

- | | | |
|-----------------|------------------|--------------------|
| ✓ Rustic Cherry | ✓ Cherry | ✓ Rustic White Oak |
| ✓ Wormy Maple | ✓ Rustic Hickory | ✓ White Oak |
| ✓ Oak | ✓ Hickory | ✓ QSWO |
| ✓ Sap Cherry | ✓ Rustic QSWO | ✓ Hard Maple |
| ✓ Rustic Oak | ✓ Rustic Walnut | ✓ Rough Sawn Maple |
| ✓ Brown Maple | ✓ Elm | |

TOP SHAPES

- | | |
|--------------------|-----------------|
| ✓ Rectangle Top | Octagon Top |
| ✓ 4" Sq. Round Top | Hexagon Top |
| ✓ Bowed End Top | Square Top |
| ✓ Oval Top | ✓ Live Edge Top |
| Round Top | |

Grand Teton

TROYER DESIGN CO.

BEST SELLER



Shown:
Live Edge
Rustic Walnut



Shown:
Rustic Hickory |
Harvest stain |
42" x 72" x 1"

Grand Teton Table OPTIONS

- 1" - 1¼" - 1½" - 1¾" top thickness
- up to 4 - 12" leaves
- up to 120" solid top
- self-store available
- 2½" skirt
- no skirt on 1½" - 1¾" solid tops
- 30"H
- 48" width available
- 42"w x 60"L
- 42"w x 72"L
- 42"w x 84"L
- 42"w x 96"L

Grand Teton Bench OPTIONS

- 1" - 1¼" - 1½" top thickness
- up to 4 - 12" leaves
- solid top
- 2½" skirt
- carrying case for leaves (included)
- 13"w x 48" L 13"w x 72" L
- 13"w x 54" L 13"w x 84" L
- 13"w x 60" L 13"w x 96" L



WOOD SPECIES

- | | | |
|-----------------|------------------|--------------------|
| ✓ Rustic Cherry | ✓ Cherry | ✓ Rustic White Oak |
| ✓ Wormy Maple | ✓ Rustic Hickory | ✓ White Oak |
| ✓ Oak | ✓ Hickory | ✓ QSWO |
| ✓ Sap Cherry | ✓ Rustic QSWO | ✓ Hard Maple |
| ✓ Rustic Oak | ✓ Rustic Walnut | ✓ Rough Sawn Maple |
| ✓ Brown Maple | ✓ Elm | |

TOP SHAPES

- | | |
|--------------------|-----------------|
| ✓ Rectangle Top | Octagon Top |
| ✓ 4" Sq. Round Top | Hexagon Top |
| ✓ Bowed End Top | Square Top |
| Oval Top | ✓ Live Edge Top |
| Round Top | |



Shown:
 Red Oak |
 Earthtone stain |
 30" x 42" OVAL x 1"

Hidden Beach Table OPTIONS

- 1" top thickness
- up to 2 - 10" leaves
- self-store available on oval top only
- solid top
- 2½" skirt
- 30"H, 36"H
- 30"W x 42" L OVAL
- 36" ROUND

WOOD SPECIES

- | | | |
|-----------------|------------------|--------------------|
| ✓ Rustic Cherry | ✓ Cherry | ✓ Rustic White Oak |
| ✓ Wormy Maple | ✓ Rustic Hickory | ✓ White Oak |
| ✓ Oak | ✓ Hickory | ✓ QSWO |
| ✓ Sap Cherry | ✓ Rustic QSWO | ✓ Hard Maple |
| ✓ Rustic Oak | ✓ Rustic Walnut | ✓ Rough Sawn Maple |
| ✓ Brown Maple | ✓ Elm | |

TOP SHAPES

- | | |
|------------------|---------------|
| Rectangle Top | Octagon Top |
| 4" Sq. Round Top | Hexagon Top |
| Bowed End Top | ✓ Square Top |
| ✓ Oval Top | Live Edge Top |
| ✓ Round Top | |

High Point Table

TROYER DESIGN CO.

Shown: Rustic White Oak | Natural stain | 42" x 60" x 1"

Mesa chairs by Artisan Chairs





High Point

TROYER DESIGN CO.



Shown: Rustic
White Oak |
Natural stain |
42" x 60" x 1" solid top

High Point Table OPTIONS

- 1" - 1¼" - 1½" - 1¾" top thickness
- up to 4 - 12" leaves
- underside bevel standard
- up to 120" solid top
- self-store available
- 2½" skirt
- 30"H
- 48" width available
- 42"w x 60"L
- 42"w x 72"L
- 42"w x 84"L
- 42"w x 96"L



WOOD SPECIES

- | | | |
|-----------------|------------------|--------------------|
| ✓ Rustic Cherry | ✓ Cherry | ✓ Rustic White Oak |
| ✓ Wormy Maple | ✓ Rustic Hickory | ✓ White Oak |
| ✓ Oak | ✓ Hickory | ✓ QSWO |
| ✓ Sap Cherry | ✓ Rustic QSWO | ✓ Hard Maple |
| ✓ Rustic Oak | ✓ Rustic Walnut | ✓ Rough Sawn Maple |
| ✓ Brown Maple | ✓ Elm | |

TOP SHAPES

- | | |
|------------------|---------------|
| ✓ Rectangle Top | Octagon Top |
| 4" Sq. Round Top | Hexagon Top |
| ✓ Bowed End Top | ✓ Square Top |
| Oval Top | Live Edge Top |
| Round Top | |

Lake View

TROYER DESIGN CO.



Shown: Rustic Br. Maple |
Hazed Wood stain |
42" x 72" x 1½" solid top

Lake View Table OPTIONS

- 1" - 1¼" - 1½" top thickness
- up to 4 - 12" leaves
- up to 120" solid top
- self-store available
- 2½" skirt
- 30"H, 36"H
- 48" width available
- 42"W x 60"L
- 42"W x 72"L
- 42"W x 84"L
- 42"W x 96"L



WOOD SPECIES

- | | | |
|-----------------|------------------|--------------------|
| ✓ Rustic Cherry | ✓ Cherry | ✓ Rustic White Oak |
| ✓ Wormy Maple | ✓ Rustic Hickory | ✓ White Oak |
| ✓ Oak | ✓ Hickory | ✓ QSWO |
| ✓ Sap Cherry | ✓ Rustic QSWO | ✓ Hard Maple |
| ✓ Rustic Oak | ✓ Rustic Walnut | ✓ Rough Sawn Maple |
| ✓ Brown Maple | ✓ Elm | |

TOP SHAPES

- | | |
|--------------------|-----------------|
| ✓ Rectangle Top | Octagon Top |
| ✓ 4" Sq. Round Top | Hexagon Top |
| ✓ Bowed End Top | Square Top |
| Oval Top | ✓ Live Edge Top |
| Round Top | |

Lake Wood

TROYER DESIGN CO.



Shown:
Rustic Hickory |
Sandstone stain |
42" x 60" x 1½"
solid top

Lake Wood Table OPTIONS

- 1" - 1¼" - 1½" - 1¾" top thickness
- up to 4 - 12" leaves
- up to 120" solid top
- self-store available
- 2½" skirt
- no skirt on 1½" - 1¾" solid tops
- 30"H
- 48" width available
- 42"w x 60"L
- 42"w x 72"L
- 42"w x 84"L
- 42"w x 96"L



WOOD SPECIES

- | | | |
|-----------------|------------------|--------------------|
| ✓ Rustic Cherry | ✓ Cherry | ✓ Rustic White Oak |
| ✓ Wormy Maple | ✓ Rustic Hickory | ✓ White Oak |
| ✓ Oak | ✓ Hickory | ✓ QSWO |
| ✓ Sap Cherry | ✓ Rustic QSWO | ✓ Hard Maple |
| ✓ Rustic Oak | ✓ Rustic Walnut | ✓ Rough Sawn Maple |
| ✓ Brown Maple | ✓ Elm | |

TOP SHAPES

- | | |
|--------------------|-----------------|
| ✓ Rectangle Top | Octagon Top |
| ✓ 4" Sq. Round Top | Hexagon Top |
| ✓ Bowed End Top | Square Top |
| ✓ Oval Top | ✓ Live Edge Top |
| Round Top | |

Mattherhorn

TROYER DESIGN CO.



Shown: Cherry |
Chestnut stain |
42" x 60" x 1" solid top

Matterhorn Table OPTIONS

- 1" top thickness
- eased edge
- up to 96" solid top
- 3" skirt
- 30"H
- 48" width available
- 42"W x 60"L
- 42"W x 72"L
- 42"W x 84"L
- 42"W x 96"L



WOOD SPECIES

- | | | |
|-----------------|------------------|--------------------|
| ✓ Rustic Cherry | ✓ Cherry | ✓ Rustic White Oak |
| ✓ Wormy Maple | ✓ Rustic Hickory | ✓ White Oak |
| ✓ Oak | ✓ Hickory | ✓ QSWO |
| ✓ Sap Cherry | ✓ Rustic QSWO | ✓ Hard Maple |
| ✓ Rustic Oak | ✓ Rustic Walnut | ✓ Rough Sawn Maple |
| ✓ Brown Maple | ✓ Elm | |

TOP SHAPES

- | | |
|------------------|---------------|
| ✓ Rectangle Top | Octagon Top |
| 4" Sq. Round Top | Hexagon Top |
| Bowed End Top | Square Top |
| Oval Top | Live Edge Top |
| Round Top | |

Matterhorn Table

TROYER DESIGN CO.

Shown: Cherry | Chestnut stain | 42" x 60" x 1"

Vinson chairs by RH Yoder





Midnight Pass

TROYER DESIGN CO.



Shown: Live
Edge Wormy
Maple |
Harvest stain |
42" x 84" x 1¾"

Midnight Pass Table OPTIONS

- 1" - 1¼" - 1½" - 1¾" top thickness
- up to 4 - 12" leaves
- up to 120" solid top
- self-store available
- 2½" skirt
- no skirt on 1½" - 1¾" solid top
- 30"H
- 48" width available
- 42"W x 60"L
- 42"W x 72"L
- 42"W x 84"L
- 42"W x 96"L



WOOD SPECIES

- | | | |
|-----------------|------------------|--------------------|
| ✓ Rustic Cherry | ✓ Cherry | ✓ Rustic White Oak |
| ✓ Wormy Maple | ✓ Rustic Hickory | ✓ White Oak |
| ✓ Oak | ✓ Hickory | ✓ QSWO |
| ✓ Sap Cherry | ✓ Rustic QSWO | ✓ Hard Maple |
| ✓ Rustic Oak | ✓ Rustic Walnut | ✓ Rough Sawn Maple |
| ✓ Brown Maple | ✓ Elm | |

TOP SHAPES

- | | |
|--------------------|-----------------|
| ✓ Rectangle Top | Octagon Top |
| ✓ 4" Sq. Round Top | Hexagon Top |
| ✓ Bowed End Top | Square Top |
| Oval Top | ✓ Live Edge Top |
| Round Top | |

Mohican

TROYER DESIGN CO.



Shown:
Wormy Maple |
Sandstone
10-sheen |
42" x 72" x 1"

Mohican Table OPTIONS

- 1" - 1¼" - 1½" - 1¾" top thickness
- up to 4 - 12" leaves
- up to 96" solid top
- self-store available
- 2½" skirt
- 30"H
- 48" width available
- 42"W x 60"L
- 42"W x 72"L
- 42"W x 84"L
- 42"W x 96"L

Mohican Bench OPTIONS

- 1" top thickness
- up to 4 - 12" leaves
- solid top
- 2½" skirt
- carrying case for leaves (included)
- 13"W x 48"L
- 13"W x 54"L
- 13"W x 60"L
- 13"W x 72"L

Quick Ship DETAILS

- Rectangle top
- 42" x 72"
- eased edge, 1" thick top
- 2 - 12" leaves, self-store
- Brown Maple or Oak



WOOD SPECIES

- | | | |
|-----------------|------------------|--------------------|
| ✓ Rustic Cherry | ✓ Cherry | ✓ Rustic White Oak |
| ✓ Wormy Maple | ✓ Rustic Hickory | ✓ White Oak |
| ✓ Oak | ✓ Hickory | ✓ QSWO |
| ✓ Sap Cherry | ✓ Rustic QSWO | ✓ Hard Maple |
| ✓ Rustic Oak | ✓ Rustic Walnut | ✓ Rough Sawn Maple |
| ✓ Brown Maple | ✓ Elm | |

TOP SHAPES

- | | |
|--------------------|---------------|
| ✓ Rectangle Top | Octagon Top |
| ✓ 4" Sq. Round Top | Hexagon Top |
| ✓ Bowed End Top | Square Top |
| Oval Top | Live Edge Top |
| Round Top | |



Shown: Red Oak |
Almond stain |
42" x 72" x 1" bow end

Montana Table OPTIONS

- 1" - 1¼" - 1½" top thickness
- up to 4 - 12" leaves
- up to 120" solid top
- self-store available
- 2½" skirt
- 30"H
- 48" width available
- 42"w x 60"L
- 42"w x 72"L
- 42"w x 84"L
- 42"w x 96"L

WOOD SPECIES

- | | | |
|-----------------|------------------|--------------------|
| ✓ Rustic Cherry | ✓ Cherry | ✓ Rustic White Oak |
| ✓ Wormy Maple | ✓ Rustic Hickory | ✓ White Oak |
| ✓ Oak | ✓ Hickory | ✓ QSWO |
| ✓ Sap Cherry | ✓ Rustic QSWO | ✓ Hard Maple |
| ✓ Rustic Oak | ✓ Rustic Walnut | ✓ Rough Sawn Maple |
| ✓ Brown Maple | ✓ Elm | |

TOP SHAPES

- | | |
|--------------------|-----------------|
| ✓ Rectangle Top | ✓ Octagon Top |
| ✓ 4" Sq. Round Top | ✓ Hexagon Top |
| ✓ Bowed End Top | ✓ Square Top |
| ✓ Oval Top | ✓ Live Edge Top |
| ✓ Round Top | |

Natural Edge

TROYER DESIGN CO.



Shown:
Rustic Walnut |
Natural stain |
42" x 84" x 1¾"

Natural Edge Table OPTIONS

- Live Edge standard
- 1½" - 1¾" solid top
- No skirt
- 30" H
- 48" width available
- up to 142" long
- 42" w x 60" L
- 42" w x 72" L
- 42" w x 84" L
- 42" w x 96" L



WOOD SPECIES

- | | | |
|-----------------|------------------|--------------------|
| ✓ Rustic Cherry | ✓ Cherry | ✓ Rustic White Oak |
| ✓ Wormy Maple | ✓ Rustic Hickory | ✓ White Oak |
| ✓ Oak | ✓ Hickory | ✓ QSWO |
| ✓ Sap Cherry | ✓ Rustic QSWO | ✓ Hard Maple |
| ✓ Rustic Oak | ✓ Rustic Walnut | ✓ Rough Sawn Maple |
| ✓ Brown Maple | ✓ Elm | |

TOP SHAPES

- | | |
|------------------|-----------------|
| Rectangle Top | Octagon Top |
| 4" Sq. Round Top | Hexagon Top |
| Bowed End Top | Square Top |
| Oval Top | ✓ Live Edge Top |
| Round Top | |



Shown:
Brown Maple |
Almond stain |
42" x 84" x 1¾"

New Haven Table OPTIONS

- 1" - 1¼" - 1½" - 1¾" top thickness
- up to 4 - 12" leaves
- up to 120" solid top
- self-store available
- 2½" skirt
- no skirt on 1½" - 1¾" solid tops
- 30"H
- 48" width available
- 42"W x 60"L
- 42"W x 72"L
- 42"W x 84"L
- 42"W x 96"L



WOOD SPECIES

- | | | |
|-----------------|------------------|--------------------|
| ✓ Rustic Cherry | ✓ Cherry | ✓ Rustic White Oak |
| ✓ Wormy Maple | ✓ Rustic Hickory | ✓ White Oak |
| ✓ Oak | ✓ Hickory | ✓ QSWO |
| ✓ Sap Cherry | ✓ Rustic QSWO | ✓ Hard Maple |
| ✓ Rustic Oak | ✓ Rustic Walnut | ✓ Rough Sawn Maple |
| ✓ Brown Maple | ✓ Elm | |

TOP SHAPES

- | | |
|--------------------|-----------------|
| ✓ Rectangle Top | Octagon Top |
| ✓ 4" Sq. Round Top | Hexagon Top |
| ✓ Bowed End Top | Square Top |
| ✓ Oval Top | ✓ Live Edge Top |
| Round Top | |



Top: Rustic Walnut |
Natural stain |
Base: Rustic Hickory |
Charwood 10-sheen |
42" x 72" x 1 1/4"

North Shore Table OPTIONS

- 1" - 1 1/4" - 1 1/2" - 1 3/4"
top thickness
- up to 4 - 12" leaves
- up to 120" solid top
- self-store available
- 2 1/2" skirt
- 30" H only
- 48" width available
- 42" W x 60" L
42" W x 72" L
42" W x 84" L
42" W x 96" L



WOOD SPECIES

- | | | |
|-----------------|------------------|--------------------|
| ✓ Rustic Cherry | ✓ Cherry | ✓ Rustic White Oak |
| ✓ Wormy Maple | ✓ Rustic Hickory | ✓ White Oak |
| ✓ Oak | ✓ Hickory | ✓ QSWO |
| ✓ Sap Cherry | ✓ Rustic QSWO | ✓ Hard Maple |
| ✓ Rustic Oak | ✓ Rustic Walnut | ✓ Rough Sawn Maple |
| ✓ Brown Maple | ✓ Elm | |

TOP SHAPES

- | | |
|--------------------|-----------------|
| ✓ Rectangle Top | Octagon Top |
| ✓ 4" Sq. Round Top | Hexagon Top |
| ✓ Bowed End Top | Square Top |
| Oval Top | ✓ Live Edge Top |
| Round Top | |



Nova Table OPTIONS

- 1" - 1¼" - 1½" - 1¾" top thickness
- up to 4 - 12" leaves
- up to 120" solid top
- self-store available
- 2½" skirt
- no skirt on 1½" - 1¾" solid tops
- 30"H, 36"H
- 48" width available
- 42"W x 60"L
- 42"W x 72"L
- 42"W x 84"L
- 42"W x 96"L

Nova Bench OPTIONS

- 1" - 1¼" - 1½" - 1¾" top thickness
- up to 120" solid top
- 2½" skirt
- no skirt on 1½" - 1¾" solid tops
- 13"W x 60"L
- 13"W x 72"L
- 13"W x 84"L
- 13"W x 96"L

WOOD SPECIES

- | | | |
|-----------------|------------------|--------------------|
| ✓ Rustic Cherry | ✓ Cherry | ✓ Rustic White Oak |
| ✓ Wormy Maple | ✓ Rustic Hickory | ✓ White Oak |
| ✓ Oak | ✓ Hickory | ✓ QSWO |
| ✓ Sap Cherry | ✓ Rustic QSWO | ✓ Hard Maple |
| ✓ Rustic Oak | ✓ Rustic Walnut | ✓ Rough Sawn Maple |
| ✓ Brown Maple | ✓ Elm | |

TOP SHAPES

- | | |
|--------------------|-----------------|
| ✓ Rectangle Top | Octagon Top |
| ✓ 4" Sq. Round Top | Hexagon Top |
| ✓ Bowed End Top | Square Top |
| Oval Top | ✓ Live Edge Top |
| Round Top | |



Shown: Rustic White Oak | Harvest 10-sheen | 42" x 60" x 1"

Odon Table OPTIONS

- 1" - 1¼" - 1½" top thickness
- up to 4 - 12" leaves
- up to 96" solid top
- self-store available
- 2½" skirt
- 30"H
- 48" width available
- 42"W x 60"L
- 42"W x 72"L
- 42"W x 84"L
- 42"W x 96"L



Oval Leg

WOOD SPECIES

- | | | |
|-----------------|------------------|--------------------|
| ✓ Rustic Cherry | ✓ Cherry | ✓ Rustic White Oak |
| ✓ Wormy Maple | ✓ Rustic Hickory | ✓ White Oak |
| ✓ Oak | ✓ Hickory | ✓ QSWO |
| ✓ Sap Cherry | ✓ Rustic QSWO | ✓ Hard Maple |
| ✓ Rustic Oak | ✓ Rustic Walnut | ✓ Rough Sawn Maple |
| ✓ Brown Maple | ✓ Elm | |

TOP SHAPES

- | | |
|--------------------|---------------|
| ✓ Rectangle Top | Octagon Top |
| ✓ 4" Sq. Round Top | Hexagon Top |
| ✓ Bowed End Top | ✓ Square Top |
| Oval Top | Live Edge Top |
| Round Top | |

Olympic Table

TROYER DESIGN CO.

Shown: Brown Maple | Seashell & Darknight stain | 42" ROUND x 1"

Yukon chairs by Artisan Chairs







Shown:
Brown Maple |
Seashell &
Darknight stain |
42" ROUND X 1"

Olympic Table OPTIONS

- 1" top thickness
- solid stop
- up to 2 - 10" leaves on 36" ROUND
- up to 2 - 12" leaves on 42" ROUND
- only 1 - 12" leaf on 48" ROUND
- self-store NOT available
- 2½" skirt
- 30" H or 36" H
- 36" ROUND
- 42" ROUND
- 48" ROUND

WOOD SPECIES

- | | | |
|-----------------|------------------|--------------------|
| ✓ Rustic Cherry | ✓ Cherry | ✓ Rustic White Oak |
| ✓ Wormy Maple | ✓ Rustic Hickory | ✓ White Oak |
| ✓ Oak | ✓ Hickory | ✓ QSWO |
| ✓ Sap Cherry | ✓ Rustic QSWO | ✓ Hard Maple |
| ✓ Rustic Oak | ✓ Rustic Walnut | ✓ Rough Sawn Maple |
| ✓ Brown Maple | ✓ Elm | |

TOP SHAPES

- | | |
|------------------|---------------|
| Rectangle Top | Octagon Top |
| 4" Sq. Round Top | Hexagon Top |
| Bowed End Top | Square Top |
| ✓ Oval Top | Live Edge Top |
| ✓ Round Top | |



Shown:
Rustic QSWO |
Natural stain |
42" x 84" x 1¾"

Ozark Table OPTIONS

- 1½" - 1¾" top thickness
- up to 142" solid top
- steel base
- 30"H only
- 48" width available
- 42"w x 60"L
42"w x 72"L
42"w x 84"L
42"w x 96"L

Ozark Bench OPTIONS

- 1½" - 1¾" top thickness
- up to 120" solid top
- steel base
- 13"w x 60"L
13"w x 72"L
13"w x 84"L
13"w x 96"L



Shown:
Rustic QSWO |
Natural stain |
13" x 84" x 1¾"

WOOD SPECIES

- | | | |
|-----------------|------------------|--------------------|
| ✓ Rustic Cherry | ✓ Cherry | ✓ Rustic White Oak |
| ✓ Wormy Maple | ✓ Rustic Hickory | ✓ White Oak |
| ✓ Oak | ✓ Hickory | ✓ QSWO |
| ✓ Sap Cherry | ✓ Rustic QSWO | ✓ Hard Maple |
| ✓ Rustic Oak | ✓ Rustic Walnut | ✓ Rough Sawn Maple |
| ✓ Brown Maple | ✓ Elm | |

TOP SHAPES

- | | |
|--------------------|-----------------|
| ✓ Rectangle Top | Octagon Top |
| ✓ 4" Sq. Round Top | Hexagon Top |
| ✓ Bowed End Top | ✓ Square Top |
| ✓ Oval Top | ✓ Live Edge Top |
| Round Top | |



Shown:
Brown Maple |
Almond stain |
36" x 60" x 1"

Pacific Table OPTIONS

- 1" - 1¼" - 1½" top thickness
- up to 4 - 12" leaves
- up to 96" solid top
- self-store NOT available
- oval top standard
- 2½" skirt
- 30"H
- 48" width available
- 36"w x 48"L
- 36"w x 54"L
- 36"w x 60"L
- 42"w x 60"L
- 42"w x 72"L

WOOD SPECIES

- | | | |
|-----------------|------------------|--------------------|
| ✓ Rustic Cherry | ✓ Cherry | ✓ Rustic White Oak |
| ✓ Wormy Maple | ✓ Rustic Hickory | ✓ White Oak |
| ✓ Oak | ✓ Hickory | ✓ QSWO |
| ✓ Sap Cherry | ✓ Rustic QSWO | ✓ Hard Maple |
| ✓ Rustic Oak | ✓ Rustic Walnut | ✓ Rough Sawn Maple |
| ✓ Brown Maple | ✓ Elm | |

TOP SHAPES

- | | |
|------------------|---------------|
| Rectangle Top | Octagon Top |
| 4" Sq. Round Top | Hexagon Top |
| Bowed End Top | Square Top |
| ✓ Oval Top | Live Edge Top |
| Round Top | |



Shown:
Brown Maple |
Shadow stain |
42" x 72" x 1"

Phantom Rock Table OPTIONS

- 1" - 1¼" - 1½" - 1¾" top thickness
- up to 4 - 12" leaves
- up to 120" solid top
- self-store available
- 2½" skirt
- 30"H only
- 48" width available
- 42"W x 60"L
- 42"W x 72"L
- 42"W x 84"L
- 42"W x 96"L

WOOD SPECIES

- | | | |
|-----------------|------------------|--------------------|
| ✓ Rustic Cherry | ✓ Cherry | ✓ Rustic White Oak |
| ✓ Wormy Maple | ✓ Rustic Hickory | ✓ White Oak |
| ✓ Oak | ✓ Hickory | ✓ QSWO |
| ✓ Sap Cherry | ✓ Rustic QSWO | ✓ Hard Maple |
| ✓ Rustic Oak | ✓ Rustic Walnut | ✓ Rough Sawn Maple |
| ✓ Brown Maple | ✓ Elm | |

TOP SHAPES

- | | |
|--------------------|-----------------|
| ✓ Rectangle Top | Octagon Top |
| ✓ 4" Sq. Round Top | Hexagon Top |
| ✓ Bowed End Top | Square Top |
| Oval Top | ✓ Live Edge Top |
| Round Top | |



Shown: Rustic Walnut top | Brown Maple base | Natural stain | 42" x 72" x 1"

Pictured Rock Table OPTIONS

- 1" - 1¼" - 1½" - 1¾" top thickness
- up to 4 - 12" leaves
- up to 120" solid top
- self-store available
- 2½" skirt
- 30"H
- 48" width available
- 42"W x 60"L
- 42"W x 72"L
- 42"W x 84"L
- 42"W x 96"L

WOOD SPECIES

- | | | |
|-----------------|------------------|--------------------|
| ✓ Rustic Cherry | ✓ Cherry | ✓ Rustic White Oak |
| ✓ Wormy Maple | ✓ Rustic Hickory | ✓ White Oak |
| ✓ Oak | ✓ Hickory | ✓ QSWO |
| ✓ Sap Cherry | ✓ Rustic QSWO | ✓ Hard Maple |
| ✓ Rustic Oak | ✓ Rustic Walnut | ✓ Rough Sawn Maple |
| ✓ Brown Maple | ✓ Elm | |

TOP SHAPES

- | | |
|--------------------|-----------------|
| ✓ Rectangle Top | Octagon Top |
| ✓ 4" Sq. Round Top | Hexagon Top |
| ✓ Bowed End Top | Square Top |
| Oval Top | ✓ Live Edge Top |
| Round Top | |



Shown:
Brown Maple |
Harvest stain |
42" ROUND X 1"

Portland Table OPTIONS

- 1" top thickness
- up to 2 - 12" leaves
- solid top
- self-store NOT available
- 2½" skirt
- 30"H
- 42" ROUND
- 48" ROUND
- 54" ROUND

WOOD SPECIES

- ✓ Rustic Cherry
- ✓ Wormy Maple
- ✓ Oak
- ✓ Sap Cherry
- ✓ Rustic Oak
- ✓ Brown Maple

- ✓ Cherry
- ✓ Rustic Hickory
- ✓ Hickory
- Rustic QSWO
- Rustic Walnut
- Elm

- Rustic White Oak
- White Oak
- QSWO
- Hard Maple
- Rough Sawn Maple

TOP SHAPES

- Rectangle Top
- 4" Sq. Round Top
- Bowed End Top
- ✓ Oval Top
- ✓ Round Top

- Octagon Top
- Hexagon Top
- ✓ Square Top
- Live Edge Top

Rainier Double

TROYER DESIGN CO.



Shown:
Brown Maple |
Bamboo 10-sheen |
42" x 84" x 1½" OVAL

Rainier Double Table OPTIONS

- 1¼" - 1½" - 1¾"
top thickness
- up to 4 - 12" leaves
- up to 48" x 142"
solid top
- oval top standard
- 30" H
- 48" width available
- 42"W x 84"L
42"W x 96"L



WOOD SPECIES

- | | | |
|-----------------|------------------|--------------------|
| ✓ Rustic Cherry | ✓ Cherry | ✓ Rustic White Oak |
| ✓ Wormy Maple | ✓ Rustic Hickory | White Oak |
| ✓ Oak | ✓ Hickory | ✓ QSWO |
| ✓ Sap Cherry | ✓ Rustic QSWO | Hard Maple |
| ✓ Rustic Oak | ✓ Rustic Walnut | Rough Sawn Maple |
| ✓ Brown Maple | ✓ Elm | |

TOP SHAPES

- | | |
|--------------------|---------------|
| ✓ Rectangle Top | Octagon Top |
| ✓ 4" Sq. Round Top | Hexagon Top |
| ✓ Bowed End Top | Square Top |
| ✓ Oval Top | Live Edge Top |
| ✓ Round Top | |

Rainier Single

TROYER DESIGN CO.

BEST SELLER



Shown:
Brown Maple |
Harvest 10-sheen |
54" ROUND X 1½"

Rainier Single Table OPTIONS

- 1" - 1½" - 1¾" top thickness
- up to 2 - 12" leaves
- solid top
- self-store NOT available
- table base is 24" ROUND
- 2½" skirt
- no skirt on 1½" - 1¾" solid tops
- 30"H
- 48" ROUND
- 54" ROUND
- 60" ROUND



WOOD SPECIES

- | | | |
|-----------------|------------------|--------------------|
| ✓ Rustic Cherry | ✓ Cherry | ✓ Rustic White Oak |
| ✓ Wormy Maple | ✓ Rustic Hickory | ✓ White Oak |
| ✓ Oak | ✓ Hickory | ✓ QSWO |
| ✓ Sap Cherry | ✓ Rustic QSWO | ✓ Hard Maple |
| ✓ Rustic Oak | ✓ Rustic Walnut | ✓ Rough Sawn Maple |
| ✓ Brown Maple | ✓ Elm | |

TOP SHAPES

- | | |
|------------------|-----------------|
| Rectangle Top | ✓ Octagon Top |
| 4" Sq. Round Top | ✓ Hexagon Top |
| Bowed End Top | ✓ Square Top |
| Oval Top | ✓ Live Edge Top |
| ✓ Round Top | |

Rainier Single Table

TROYER DESIGN CO.

Shown: Brown Maple | Harvest 10-sheen | 54" ROUND x 1½"

Westal chairs by RH Yoder







Shown:
Brown Maple |
Earthtone stain |
42" x 72" x 1"

Ripple Creek Table OPTIONS

- 1" - 1¼" - 1½" - 1¾" top thickness
- up to 4 - 12" leaves
- up to 120" solid top
- self-store available
- 2½" skirt
- 30"H only
- 48" width available
- 42"W x 60"L
- 42"W x 72"L
- 42"W x 84"L
- 42"W x 96"L

WOOD SPECIES

- | | | |
|-----------------|------------------|--------------------|
| ✓ Rustic Cherry | ✓ Cherry | ✓ Rustic White Oak |
| ✓ Wormy Maple | ✓ Rustic Hickory | ✓ White Oak |
| ✓ Oak | ✓ Hickory | ✓ QSWO |
| ✓ Sap Cherry | ✓ Rustic QSWO | Hard Maple |
| ✓ Rustic Oak | ✓ Rustic Walnut | ✓ Rough Sawn Maple |
| ✓ Brown Maple | ✓ Elm | |

TOP SHAPES

- | | |
|--------------------|-----------------|
| ✓ Rectangle Top | Octagon Top |
| ✓ 4" Sq. Round Top | Hexagon Top |
| ✓ Bowed End Top | Square Top |
| Oval Top | ✓ Live Edge Top |
| Round Top | |

Silver Meadow

TROYER DESIGN CO.



Shown: Rough Sawn
Brown Maple |
Almond stain |
42" x 84" x 1¾"

Silver Meadow Table OPTIONS

- 1½" - 1¾" top thickness
- up to 48" x 142" solid top
- steel base
- 30" H
- 48" width available
- 42"W x 60"L
- 42"W x 72"L
- 42"W x 84"L
- 42"W x 96"L



WOOD SPECIES

- | | | |
|-----------------|------------------|--------------------|
| ✓ Rustic Cherry | ✓ Cherry | ✓ Rustic White Oak |
| ✓ Wormy Maple | ✓ Rustic Hickory | ✓ White Oak |
| ✓ Oak | ✓ Hickory | ✓ QSWO |
| ✓ Sap Cherry | ✓ Rustic QSWO | ✓ Hard Maple |
| ✓ Rustic Oak | ✓ Rustic Walnut | ✓ Rough Sawn Maple |
| ✓ Brown Maple | ✓ Elm | |

TOP SHAPES

- | | |
|--------------------|-----------------|
| ✓ Rectangle Top | Octagon Top |
| ✓ 4" Sq. Round Top | Hexagon Top |
| ✓ Bowed End Top | ✓ Square Top |
| ✓ Oval Top | ✓ Live Edge Top |
| Round Top | |

Solid View Table

TROYER DESIGN CO.

Shown: Rustic Hickory top with Natural stain | Brown Maple base with Onyx stain | 42" x 84" x 1½"

Bradbury chairs by RH Yoder







Shown: Rustic Hickory top with Natural stain | Brown Maple base with Onyx stain | 42" x 84" x 1¾"

Solid View Table OPTIONS

- 1" - 1¼" - 1½" - 1¾" top thickness
- up to 4 - 12" leaves
- up to 120" solid top
- self-store available
- 2½" skirt
- no skirt on 1½" - 1¾" solid tops
- 30"H
- 48" width available
- 42"W x 60"L
- 42"W x 72"L
- 42"W x 84"L
- 42"W x 96"L

WOOD SPECIES

- | | | |
|-----------------|------------------|--------------------|
| ✓ Rustic Cherry | ✓ Cherry | ✓ Rustic White Oak |
| ✓ Wormy Maple | ✓ Rustic Hickory | ✓ White Oak |
| ✓ Oak | ✓ Hickory | ✓ QSWO |
| ✓ Sap Cherry | ✓ Rustic QSWO | ✓ Hard Maple |
| ✓ Rustic Oak | ✓ Rustic Walnut | ✓ Rough Sawn Maple |
| ✓ Brown Maple | ✓ Elm | |

TOP SHAPES

- | | |
|--------------------|-----------------|
| ✓ Rectangle Top | Octagon Top |
| ✓ 4" Sq. Round Top | Hexagon Top |
| ✓ Bowed End Top | Square Top |
| Oval Top | ✓ Live Edge Top |
| Round Top | |

South Bend

TROYER DESIGN CO.



Shown:
Brown Maple |
Almond stain |
42" x 72" x 1"

South Bend Table OPTIONS

- 1" - 1¼" - 1½" - 1¾" top thickness
- up to 4 - 12" leaves
- up to 120" solid top
- self-store available
- 2½" skirt
- 30"H
- 48" width available
- 42"w x 60"L
- 42"w x 72"L
- 42"w x 84"L
- 42"w x 96"L



WOOD SPECIES

- | | | |
|-----------------|------------------|--------------------|
| ✓ Rustic Cherry | ✓ Cherry | ✓ Rustic White Oak |
| ✓ Wormy Maple | ✓ Rustic Hickory | ✓ White Oak |
| ✓ Oak | ✓ Hickory | ✓ QSWO |
| ✓ Sap Cherry | ✓ Rustic QSWO | ✓ Hard Maple |
| ✓ Rustic Oak | ✓ Rustic Walnut | ✓ Rough Sawn Maple |
| ✓ Brown Maple | ✓ Elm | |

TOP SHAPES

- | | |
|--------------------|-----------------|
| ✓ Rectangle Top | Octagon Top |
| ✓ 4" Sq. Round Top | Hexagon Top |
| ✓ Bowed End Top | Square Top |
| Oval Top | ✓ Live Edge Top |
| Round Top | |



Shown: Live Edge
Wormy Maple |
Sandstone 10-sheen |
42" x 84" x 1¾"

Stoney Creek Table OPTIONS

- 1" - 1¼" - 1½" - 1¾" top thickness
- up to 4 - 12" leaves
- up to 120" solid top
- self-store available
- 2½" skirt
- no skirt on 1½" - 1¾" solid tops
- 30"H only
- 48" width available
- 42"W x 60"L
- 42"W x 72"L
- 42"W x 84"L
- 42"W x 96"L



WOOD SPECIES

- | | | |
|-----------------|------------------|--------------------|
| ✓ Rustic Cherry | ✓ Cherry | ✓ Rustic White Oak |
| ✓ Wormy Maple | ✓ Rustic Hickory | ✓ White Oak |
| ✓ Oak | ✓ Hickory | ✓ QSWO |
| ✓ Sap Cherry | ✓ Rustic QSWO | ✓ Hard Maple |
| ✓ Rustic Oak | ✓ Rustic Walnut | ✓ Rough Sawn Maple |
| ✓ Brown Maple | ✓ Elm | |

TOP SHAPES

- | | |
|--------------------|-----------------|
| ✓ Rectangle Top | Octagon Top |
| ✓ 4" Sq. Round Top | Hexagon Top |
| ✓ Bowed End Top | Square Top |
| Oval Top | ✓ Live Edge Top |
| Round Top | |

Surf Side Desk

TROYER DESIGN CO.



Surf Side Desk OPTIONS

- 1½" solid top
- with or without live edge
- adjustable height steel base
- 110V push button mechanism
- Adjustable from 30" - 48"H
- 26" w x 54" L
26" w x 60" L

Shown:
Live Edge Walnut |
Natural stain |
26" x 54" x 1¾"



110V push button mechanism



WOOD SPECIES

- | | | |
|-----------------|------------------|--------------------|
| ✓ Rustic Cherry | ✓ Cherry | ✓ Rustic White Oak |
| ✓ Wormy Maple | ✓ Rustic Hickory | ✓ White Oak |
| ✓ Oak | ✓ Hickory | ✓ QSWO |
| ✓ Sap Cherry | ✓ Rustic QSWO | ✓ Hard Maple |
| ✓ Rustic Oak | ✓ Rustic Walnut | ✓ Rough Sawn Maple |
| ✓ Brown Maple | ✓ Elm | |

TOP SHAPES

- | | |
|--------------------|-----------------|
| ✓ Rectangle Top | Octagon Top |
| ✓ 4" Sq. Round Top | Hexagon Top |
| ✓ Bowed End Top | Square Top |
| Oval Top | ✓ Live Edge Top |
| Round Top | |



Shown:
Brown Maple |
Harvest stain |
42" x 84" x 1¾"

Swiss Valley Table OPTIONS

- 1½" - 1¾" top thickness
- up to 120" solid top
- oval top with bullnose edge standard
- 30" H
- 48" width available
- 42"W x 60" L
- 42"W x 72" L
- 42"W x 84" L
- 42"W x 96" L

WOOD SPECIES

- | | | |
|-----------------|------------------|--------------------|
| ✓ Rustic Cherry | ✓ Cherry | ✓ Rustic White Oak |
| ✓ Wormy Maple | ✓ Rustic Hickory | ✓ White Oak |
| ✓ Oak | ✓ Hickory | ✓ QSWO |
| ✓ Sap Cherry | ✓ Rustic QSWO | ✓ Hard Maple |
| ✓ Rustic Oak | ✓ Rustic Walnut | ✓ Rough Sawn Maple |
| ✓ Brown Maple | ✓ Elm | |

TOP SHAPES

- | | |
|--------------------|-----------------|
| ✓ Rectangle Top | Octagon Top |
| ✓ 4" Sq. Round Top | Hexagon Top |
| ✓ Bowed End Top | Square Top |
| ✓ Oval Top | ✓ Live Edge Top |
| Round Top | |



Shown: Rough Sawn Red Oak | Rentown Storm stain | 42" x 84" x 1¾"

Timber Ridge Table OPTIONS

- 1" - 1¼" - 1½" - 1¾" top thickness
- up to 4 - 12" leaves
- up to 120" solid top
- self-store available
- 2½" skirt
- no skirt on 1½" - 1¾" solid tops
- 30"h
- 48" width available
- 42"w x 60"L
- 42"w x 72"L
- 42"w x 84"L
- 42"w x 96"L

WOOD SPECIES

- | | | |
|-----------------|------------------|--------------------|
| ✓ Rustic Cherry | ✓ Cherry | ✓ Rustic White Oak |
| ✓ Wormy Maple | ✓ Rustic Hickory | ✓ White Oak |
| ✓ Oak | ✓ Hickory | ✓ QSWO |
| ✓ Sap Cherry | ✓ Rustic QSWO | ✓ Hard Maple |
| ✓ Rustic Oak | ✓ Rustic Walnut | ✓ Rough Sawn Maple |
| ✓ Brown Maple | ✓ Elm | |

TOP SHAPES

- | | |
|--------------------|-----------------|
| ✓ Rectangle Top | Octagon Top |
| ✓ 4" Sq. Round Top | Hexagon Top |
| ✓ Bowed End Top | Square Top |
| Oval Top | ✓ Live Edge Top |
| Round Top | |

Tranquil Wave

TROYER DESIGN CO.



Shown:
Rustic Hickory |
Natural finish |
42" x 72" x 1" bow end

Tranquil Wave Table OPTIONS

- 1" - 1¼" - 1½" top thickness
- up to 4 - 12" leaves
- up to 120" solid top
- self-store available
- 2½" skirt
- 30"H
- 48" width available
- 42"w x 60"L
- 42"w x 72"L
- 42"w x 84"L
- 42"w x 96"L



WOOD SPECIES

- | | | |
|-----------------|------------------|--------------------|
| ✓ Rustic Cherry | ✓ Cherry | ✓ Rustic White Oak |
| ✓ Wormy Maple | ✓ Rustic Hickory | ✓ White Oak |
| ✓ Oak | ✓ Hickory | ✓ QSWO |
| ✓ Sap Cherry | ✓ Rustic QSWO | ✓ Hard Maple |
| ✓ Rustic Oak | ✓ Rustic Walnut | ✓ Rough Sawn Maple |
| ✓ Brown Maple | ✓ Elm | |

TOP SHAPES

- | | |
|--------------------|-----------------|
| ✓ Rectangle Top | Octagon Top |
| ✓ 4" Sq. Round Top | Hexagon Top |
| ✓ Bowed End Top | Square Top |
| Oval Top | ✓ Live Edge Top |
| Round Top | |



Shown:
Brown Maple |
Bamboo 10-sheen |
42" x 84" x 1½"

Tucson Table OPTIONS

- 1" - 1¼" - 1½" - 1¾" top thickness
- up to 4 - 12" leaves
- up to 120" solid top
- self-store available
- 2½" skirt
- no skirt on 1½" - 1¾" solid tops
- 30"H
- 48" width available
- 42"w x 60"L
- 42"w x 72"L
- 42"w x 84"L
- 42"w x 96"L



WOOD SPECIES

- | | | |
|-----------------|------------------|--------------------|
| ✓ Rustic Cherry | ✓ Cherry | ✓ Rustic White Oak |
| ✓ Wormy Maple | ✓ Rustic Hickory | ✓ White Oak |
| ✓ Oak | ✓ Hickory | ✓ QSWO |
| ✓ Sap Cherry | ✓ Rustic QSWO | ✓ Hard Maple |
| ✓ Rustic Oak | ✓ Rustic Walnut | ✓ Rough Sawn Maple |
| ✓ Brown Maple | ✓ Elm | |

TOP SHAPES

- | | |
|--------------------|-----------------|
| ✓ Rectangle Top | Octagon Top |
| ✓ 4" Sq. Round Top | Hexagon Top |
| ✓ Bowed End Top | Square Top |
| Oval Top | ✓ Live Edge Top |
| Round Top | |

Tucson Table

TROYER DESIGN CO.

Shown: Brown Maple | Bamboo 10-sheen | 42" x 84" x 1½"

Evans chairs by Artisan Chairs





Vegas Table

TROYER DESIGN CO.

Shown: Rough Sawn Maple | Almond 10-sheen | 42" x 72" x 1¼"

Vegas chairs by Artisan Chairs







Shown:
Rough Sawn
Maple |
Natural stain |
42" x 72" x 1¼"

Vegas Table OPTIONS

- 1" - 1¼" - 1½" - 1¾" top thickness
- up to 4 - 12" leaves
- up to 120" solid top
- 1¼" rough sawn maple standard
- self-store available
- 2½" skirt
- 30"H
- 48" width available
- 42"W x 60"L
- 42"W x 72"L
- 42"W x 84"L
- 42"W x 96"L

Vegas Bench OPTIONS

- 1" - 1¼" top thickness
- solid top only
- 2½" skirt
- 13"W x 48"L
- 13"W x 54"L
- 13"W x 60"L
- 13"W x 72"L



WOOD SPECIES

- | | | |
|-----------------|------------------|--------------------|
| ✓ Rustic Cherry | ✓ Cherry | ✓ Rustic White Oak |
| ✓ Wormy Maple | ✓ Rustic Hickory | ✓ White Oak |
| ✓ Oak | ✓ Hickory | ✓ QSWO |
| ✓ Sap Cherry | ✓ Rustic QSWO | ✓ Hard Maple |
| ✓ Rustic Oak | ✓ Rustic Walnut | ✓ Rough Sawn Maple |
| ✓ Brown Maple | ✓ Elm | |

TOP SHAPES

- | | |
|------------------|-----------------|
| ✓ Rectangle Top | Octagon Top |
| 4" Sq. Round Top | Hexagon Top |
| Bowed End Top | Square Top |
| Oval Top | ✓ Live Edge Top |
| Round Top | |



Shown: Brown Maple |
Diluted Classic Grey DS1071 stain |
36" x 48" x 1"

Woodhaven Table OPTIONS

- 1" top thickness
- up to 4 - 12" leaves
- solid top
- self-store available
- 2½" skirt
- 30"H, 36"H
- 36"W x 48"L
- 36"W x 54"L
- 36"W x 60"L

Quick Ship DETAILS

- Rectangle top
- 36" x 48" or 36" x 54"
- eased edge
- 1" thick top
- 3" x 3" tapered Shaker legs
- 2 - 12" leaves
- self-store
- Brown Maple, Wormy Maple or Oak



WOOD SPECIES

- | | | |
|-----------------|------------------|--------------------|
| ✓ Rustic Cherry | ✓ Cherry | ✓ Rustic White Oak |
| ✓ Wormy Maple | ✓ Rustic Hickory | ✓ White Oak |
| ✓ Oak | ✓ Hickory | ✓ QSWO |
| ✓ Sap Cherry | ✓ Rustic QSWO | ✓ Hard Maple |
| ✓ Rustic Oak | ✓ Rustic Walnut | ✓ Rough Sawn Maple |
| ✓ Brown Maple | ✓ Elm | |

TOP SHAPES

- | | |
|--------------------|-----------------|
| ✓ Rectangle Top | Octagon Top |
| ✓ 4" Sq. Round Top | Hexagon Top |
| ✓ Bowed End Top | Square Top |
| Oval Top | ✓ Live Edge Top |
| Round Top | |

Yellowstone Table

TROYER DESIGN CO.

Shown: Brown Maple | Almond stain burnished top and Weathered Beige base | 36" x 54" x 1¼"

Easton chairs by Artisan Chairs







Shown:
Brown Maple |
Earthtone stain |
36" x 54" x 1 1/4"

Yellowstone Table OPTIONS

- 1" - 1 1/4" top thickness
- 1 1/4" solid top standard
- up to 4 - 12" leaves
- up to 120" solid top
- 30"H
- 48" width available
- 36"W x 48"L 42"W x 48"L
- 36"W x 54"L 42"W x 54"L
- 36"W x 60"L 42"W x 60"L
- 36"W x 72"L 42"W x 72"L



WOOD SPECIES

- | | | |
|-----------------|------------------|--------------------|
| ✓ Rustic Cherry | ✓ Cherry | ✓ Rustic White Oak |
| ✓ Wormy Maple | ✓ Rustic Hickory | ✓ White Oak |
| ✓ Oak | ✓ Hickory | ✓ QSWO |
| ✓ Sap Cherry | ✓ Rustic QSWO | ✓ Hard Maple |
| ✓ Rustic Oak | ✓ Rustic Walnut | ✓ Rough Sawn Maple |
| ✓ Brown Maple | ✓ Elm | |

TOP SHAPES

- | | |
|--------------------|-----------------|
| ✓ Rectangle Top | Octagon Top |
| ✓ 4" Sq. Round Top | Hexagon Top |
| ✓ Bowed End Top | Square Top |
| Oval Top | ✓ Live Edge Top |
| Round Top | |



Shown:
Rustic QSWO |
Natural stain |
42" x 84" x 1¾"

Yosemite Table OPTIONS

- 1½" - 1¾" top thickness
- up to 120" solid top
- steel legs
- 30"H only
- 48" width available
- 42"W x 60"L
- 42"W x 72"L
- 42"W x 84"L
- 42"W x 96"L



WOOD SPECIES

- | | | |
|-----------------|------------------|--------------------|
| ✓ Rustic Cherry | ✓ Cherry | ✓ Rustic White Oak |
| ✓ Wormy Maple | ✓ Rustic Hickory | ✓ White Oak |
| ✓ Oak | ✓ Hickory | ✓ QSWO |
| ✓ Sap Cherry | ✓ Rustic QSWO | ✓ Hard Maple |
| ✓ Rustic Oak | ✓ Rustic Walnut | ✓ Rough Sawn Maple |
| ✓ Brown Maple | ✓ Elm | |

TOP SHAPES

- | | |
|--------------------|-----------------|
| ✓ Rectangle Top | Octagon Top |
| ✓ 4" Sq. Round Top | Hexagon Top |
| ✓ Bowed End Top | ✓ Square Top |
| ✓ Oval Top | ✓ Live Edge Top |
| ✓ Round Top | |

CHOOSE YOUR OWN...

Choose your solid wood top to match your style steel base.

1½" and 1¾" is standard live edge top thickness.

Standard wood species: Rustic Oak, Rustic Cherry, Wormy Maple, Oak, Sap Cherry, Rustic Hickory, Brown Maple, Cherry, Hickory, Elm, Rustic QSWO, Hard Maple, Rustic Walnut, QSWO, White Oak, Rough Sawn Maple (*Contact us for other wood species availability.*)

Live Edge species: Rustic Red Oak, Rustic Cherry, Wormy Maple, Rustic Hickory, Brown Maple, Rough Sawn Maple, Rustic Walnut, and Rustic White Oak. *Call for availability on White Oak.*

Custom sizes available.

Live Edge or Solid Tops 1½" and 1¾"

13" x 48"	24" x 24"	36" x 36"	48" x 48"
13" x 60"	24" x 30"	36" x 48"	48" x 60"
13" x 72"	24" x 36"	36" x 60"	48" x 72"
13" x 84"	24" x 48"	36" x 72"	48" x 84"
13" x 96"	24" x 60"	36" x 84"	48" x 96"
13" x 108"	24" x 72"	36" x 96"	48" x 108"
13" x 120"	24" x 84"	36" x 108"	48" x 120"
13" x 132"	24" x 96"	36" x 120"	48" x 132"
13" x 142"	24" x 108"	36" x 132"	48" x 142"
	24" x 120"	36" x 142"	
20" x 24"	24" x 132"		36" round*
20" x 30"	24" x 142"	42" x 42"	42" round*
20" x 36"		42" x 48"	48" round*
20" x 48"	30" x 30"	42" x 60"	54" round*
20" x 60"	30" x 36"	42" x 72"	60" round*
20" x 72"	30" x 48"	42" x 84"	66" round*
	30" x 60"	42" x 96"	72" round*
	30" x 72"	42" x 108"	*round not available in live edge
	30" x 84"	42" x 120"	
	30" x 96"	42" x 132"	
	30" x 108"	42" x 142"	
	30" x 120"		
	30" x 132"		
	30" x 142"		

Bold sizes are Quick Ship

36" & wider tops will have 2 stabilizer bars | Round solid top will have 3 stabilizer bars

UB Series steel base

Solid Top with or without Live Edge

TROYER DESIGN CO.

BEST SELLER



Shown: Live Edge Walnut | Dark Walnut stain | 42" x 84" x 1¾"
Flat Black Powdercoat
See page 114 for available sizes & species



ITEM #	DIMENSIONS	MATERIAL	DESCRIPTION
UB-42628	26" W x 28" H	2 x 4	DINING
UB-32628	26" W x 28" H	1½ x 3	DINING
UB-32634	26" W x 34" H	1½ x 3	DINING
UB-31816	18" W x 16" H	1½ x 3	COFFEE
UB-21216	12" W x 16" H	1 x 2	BENCH
UB-21224	12" W X 24" H	1 x 2	END TABLE
UB-21228	12" W X 28" H	1 x 2	DINING
UB-21234	12" W X 34" H	1 x 2	BAR HEIGHT

Solid Top
with or without Live Edge
1½" - 1¾" top thickness
42" x 60" 42" x 84"
42" x 72" 42" x 96"
Rustic Cherry, Rustic Walnut,
or Wormy Maple



X Series steel base

Solid Top with or without Live Edge

TROYER DESIGN CO.

BEST SELLER



Shown: Live Edge Walnut | Dark Walnut stain |
42" x 84" x 1¾" | Flat Black Powdercoat
See page 114 for available sizes & species



ITEM #	DIMENSIONS	MATERIAL	DESCRIPTION
X-2628	26" W x 28" H	2" SQ.	DINING
X-1816	18" W x 16" H	2" SQ.	COFFEE
X-1216	12" W x 16" H	2" SQ.	BENCH

Solid Top
with or without Live Edge
1½" - 1¾" top thickness
42" x 60" 42" x 84"
42" x 72" 42" x 96"
Rustic Cherry, Rustic Walnut,
or Wormy Maple



MHP Series steel base

TROYER DESIGN CO.

Mission Hairpin legs | Solid Top with or without Live Edge



Shown: Live Edge Walnut | Dark Walnut stain |
42" x 84" x 1¾" | Flat Black Powdercoat
See page 114 for available sizes & species



ITEM #	HEIGHT	MATERIAL	DESCRIPTION
MHP-16	16" H	¾ SQ.	COFFEE
MHP-24	24" H	¾ SQ.	END TABLE
MHP-28	28" H	½ SQ.	DINING
MHP-34	34" H	½ SQ.	BAR HEIGHT

MMHP Series steel base |

TROYER DESIGN CO.

Modern Mission Hairpin legs | Solid Top with or without Live Edge



Shown: Live Edge Walnut | Dark Walnut stain |
42" x 84" x 1¾" | Black Wrinkle Powdercoat
See page 114 for available sizes & species



ITEM #	HEIGHT	MATERIAL	DESCRIPTION
MMHP-16	16" H	¾ SQ.	COFFEE
MMHP-24	24" H	¾ SQ.	END TABLE
MMHP-28	28" H	½ SQ.	DINING
MMHP-34	34" H	½ SQ.	BAR HEIGHT

RHP Series steel base

TROYER DESIGN CO.

Round Hairpin legs | Solid Top with or without Live Edge



Shown: Live Edge Walnut | Dark Walnut stain |
42" x 84" x 1 3/4" | Flat Black Powdercoat
See page 114 for available sizes & species



ITEM #	HEIGHT	MATERIAL	DESCRIPTION
RHP-16	16" H	3/8 RD.	COFFEE
RHP-24	24" H	3/8 RD.	END TABLE
RHP-28	28" H	1/2 RD.	DINING
RHP-34	34" H	1/2 RD.	BAR HEIGHT

SHP Series steel base

Square Hairpin legs | Solid Top with or without Live Edge

TROYER DESIGN CO.



Shown: Live Edge Walnut | Dark Walnut stain |
42" x 84" x 1 $\frac{3}{4}$ " | Black Wrinkle Powdercoat
See page 114 for available sizes & species



ITEM #	HEIGHT	MATERIAL	DESCRIPTION
SHP-16	16" H	$\frac{3}{8}$ SQ.	COFFEE
SHP-24	24" H	$\frac{3}{8}$ SQ.	END TABLE
SHP-28	28" H	$\frac{1}{2}$ SQ.	DINING
SHP-34	34" H	$\frac{1}{2}$ SQ.	BAR HEIGHT

TTHP Series steel base

TROYER DESIGN CO.

Triple Twist Hairpin legs | Solid Top with or without Live Edge



Shown: Live Edge Walnut | Dark Walnut stain |
42" x 84" x 1¾" | Black Wrinkle Powdercoat
See page 114 for available sizes & species



ITEM #	HEIGHT	MATERIAL	DESCRIPTION
TTHP-16	16" H	¾ SQ.	COFFEE
TTHP-24	24" H	¾ SQ.	END TABLE
TTHP-28	28" H	½ SQ.	DINING
TTHP-34	34" H	½ SQ.	BAR HEIGHT

1100 series steel base

TROYER DESIGN CO.



1100-10
End Table



1100-20
End Table



1100-30
Coffee Table



1100-40
Sofa Table

ITEM #	FOOTPRINT	HEIGHT	MAT. SIZE	DESCRIPTION
1100-10	15" x 15"	22" H	2"	SINGLE PED. END TABLE
1100-20	15" x 15"	22" H	2"	SINGLE PED. END TABLE
1100-30	16" x 30"	18" H	2"	COFFEE TABLE
1100-40	16" x 45"	28" H	2 1/2"	SOFA TABLE
1100-50	30" x 60"	28" H	4"	DINING
1100-60	10" wide	16" H	2"	BENCH
1100-70SPD	30" x 30"	28" H	4"	SINGLE PED. DINING HEIGHT
1100-70SPC	30" x 30"	34" H	4"	SINGLE PED. COUNTER HEIGHT
1100-70SPP	30" x 30"	40" H	4"	SINGLE PED. PUB HEIGHT
1100-80SPD	30" x 30"	28" H	4"	SINGLE PED. DINING HEIGHT
1100-80SPC	30" x 30"	34" H	4"	SINGLE PED. COUNTER HEIGHT
1100-80SPP	30" x 30"	40" H	4"	SINGLE PED. PUB HEIGHT

1200 series steel base

BEST SELLER



base only



1200-70
Single Ped. Pub Height



1200-40
Sofa Table

ITEM #	FOOTPRINT	HEIGHT	MAT. SIZE	DESCRIPTION
1200-10	17" wide	22" H	1/2" x 2"	SMALL END TABLE
1200-15	16" x 16"	22" H	1/4" x 1 1/2"	SINGLE PED. END TABLE
1200-16	26" x 26"	16" H	1/4" x 2"	SINGLE PED. COFFEE TABLE
1200-20	21" wide	22" H	1/2" x 2"	END TABLE
1200-30	21" wide	16" H	1/2" x 2"	COFFEE TABLE
1200-40	17" wide	28" H	1/2" x 2"	SOFA TABLE
1200-50	32" wide	28" H	1/2" x 4"	DINING TABLE
1200-60	15" wide	16" H	1/4" x 3"	BENCH LEG
1200-70SPD	30" x 30"	28" H	1/2" x 3"	SINGLE PED. DINING HEIGHT
1200-70SPC	30" x 30"	34" H	1/2" x 3"	SINGLE PED. COUNTER HEIGHT
1200-70SPP	30" x 30"	40" H	1/2" x 3"	SINGLE PED. PUB HEIGHT
1222	17 1/2" x 17 1/2"	22" H	1/4" x 1 1/4"	BAR STOOL BASE (FINISH 24" HT.)
1228	17" x 17"	28" H	1/4" x 1 1/4"	BAR STOOL BASE (FINISH 30" HT.)

1300 series steel base

TROYER DESIGN CO.



base only



1300-30
Coffee Table

ITEM #	FOOTPRINT	HEIGHT	MAT. SIZE	DESCRIPTION
1300-10	21" wide	22" H	½" x 3"	END TABLE
1300-30	19" wide	16" H	½" x 3"	COFFEE TABLE
1300-40	17" wide	28" H	½" x 3"	SOFA TABLE
1300-50	25" wide	28" H	½" x 4"	DINING TABLE
1300-60	14" wide	16" H	½" x 2"	BENCH LEG

1600 series steel base



base only



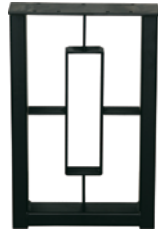
1600-30
Coffee Table

ITEM #	FOOTPRINT	HEIGHT	MAT. SIZE	DESCRIPTION
1600-10	14" wide	22" H	¼" x 3"	END TABLE
1600-30	18" wide	16" H	¼" x 3"	COFFEE TABLE
1600-40	14" wide	28" H	¼" x 3"	SOFA TABLE
1600-50	28" wide	28" H	½" x 4"	DINING TABLE
1600-60	12" wide	16" H	¼" x 3"	BENCH LEG

1300 & 1600 series

1750 series steel base

TROYER DESIGN CO.



base only



1750-40
Sofa Table

ITEM #	FOOTPRINT	HEIGHT	MAT. SIZE	DESCRIPTION
1750-10	14" wide	22" H	1½" x 3"	END TABLE
1750-30	18" wide	16" H	1½" x 3"	COFFEE TABLE
1750-40	14" wide	28" H	1½" x 3"	SOFA TABLE
1750-50	28" wide	28" H	2" x 4"	DINING TABLE
1750-60	12" wide	16" H	1" x 2"	BENCH LEG

1800 series steel base



base only



1800-70
Single Ped. Pub Height



1800-50
Dining Table

ITEM #	FOOTPRINT	HEIGHT	MAT. SIZE	DESCRIPTION
1800-15	15" x 15"	21½" H	¼" x 3"	SINGLE PED. END TABLE
1800-30	18" wide	17" H	¼" x 3"	COFFEE TABLE
1800-40	14" wide	28" H	¼" x 3"	SOFA TABLE
1800-50	26" wide	28" H	½" x 3"	DINING TABLE
1800-60	12" wide	15¾" H	¼" x 3"	BENCH LEG
1800-70SPD	26" x 26"	28" H	¾" x 3"	SINGLE PED. DINING HEIGHT
1800-70SPC	26" x 26"	34" H	¾" x 3"	SINGLE PED. COUNTER HEIGHT
1800-70SPP	26" x 26"	40" H	¾" x 3"	SINGLE PED. PUB HEIGHT

1750 & 1800 series

1900 series steel base

TROYER DESIGN CO.



base only



1900-40
Sofa Table



1900-50
Dining Table

ITEM #	FOOTPRINT	HEIGHT	MAT. SIZE	DESCRIPTION
1900-10	14" wide	23" H	½" x 2"	END TABLE
1900-15	18" x 18"	23" H	½" x 2"	SINGLE PED. END TABLE
1900-20	24" wide	23" H	½" x 2"	END TABLE
1900-30	24" wide	17" H	½" x 2"	COFFEE TABLE
1900-40	20" wide	28" H	½" x 2"	SOFA TABLE
1900-50	33" wide	28" H	½" x 4"	DINING TABLE
1900-60	10" wide	16" H	¼" x 3"	BENCH LEG
1900-70SPD	33" x 33"	28" H	½" x 3"	SINGLE PED. DINING HEIGHT
1900-70SPC	33" x 33"	34" H	½" x 3"	SINGLE PED. COUNTER HEIGHT
1900-70SPP	33" x 33"	40" H	½" x 3"	SINGLE PED. PUB HEIGHT

2100 series steel base



base only



2100-30
Coffee Table



2100-50
Dining Table

ITEM #	FOOTPRINT	HEIGHT	MAT. SIZE	DESCRIPTION
2100-10	17"	22" H	½" x 2"	END TABLE
2100-15	18" x 17"	22" H	½" x 2"	SINGLE PED. END TABLE
2100-16	25" x 24"	16" H	½" x 2"	SINGLE PED. COFFEE TABLE
2100-30	21"	16" H	½" x 2"	COFFEE TABLE
2100-40	17"	28" H	½" x 2"	SOFA TABLE
2100-50	33"	28" H	½" x 4"	DINING TABLE
2100-55	23"	28" H	½" x 3"	DESK
2100-60	14"	16" H	¼" x 2"	BENCH LEG
2100-70SPD	33" x 34"	28" H	½" x 3"	SINGLE PED. DINING HEIGHT
2100-70SPC	33" x 34"	34" H	½" x 3"	SINGLE PED. COUNTER HEIGHT
2100-70SPP	33" x 34"	40" H	½" x 3"	SINGLE PED. PUB HEIGHT

1900 series & 2100 series

2200 series steel base

TROYER DESIGN CO.



base only



2200-30
Coffee Table



2200-50
Dining Table

ITEM #	FOOTPRINT	HEIGHT	MAT. SIZE	DESCRIPTION
2200-10	14"	22" H	¼" x 3"	END TABLE
2200-30	18"	16" H	¼" x 3"	COFFEE TABLE
2200-40	14"	28" H	¼" x 3"	SOFA TABLE
2200-50	28"	28" H	¾" x 4"	DINING TABLE
2200-55	20"	28" H	¾" x 4"	DESK
2200-60	11"	16" H	¼" x 3"	BENCH LEG

2300 series steel base

BEST SELLER



base only



2300-70
Single Ped. Pub Height



2300-50
Dining Table

ITEM #	FOOTPRINT	HEIGHT	MAT. SIZE	DESCRIPTION
2300-10	14"	22" H	2" chan.	END TABLE
2300-15	14" x 14"	22" H	2" chan.	SINGLE PED. END TABLE
2300-16	18" x 18"	16" H	2" chan.	SINGLE PED. COFFEE TABLE
2300-30	18"	16" H	2" chan.	COFFEE TABLE
2300-40	14"	28" H	2" chan.	SOFA TABLE
2300-50	30"	28" H	3" chan.	DINING TABLE
2300-55	20"	28" H	3" chan.	DESK
2300-60	11"	16" H	2" chan.	BENCH LEG
2300-70SPD	30" x 30"	28" H	3" chan.	SINGLE PED. DINING HEIGHT
2300-70SPC	30" x 30"	34" H	3" chan.	SINGLE PED. COUNTER HEIGHT
2300-70SPP	30" x 30"	40" H	3" chan.	SINGLE PED. PUB HEIGHT

2200 & 2300 series

2400 series steel base

TROYER DESIGN CO.



base only



2400-50
Dining Table

ITEM #	FOOTPRINT	HEIGHT	MAT. SIZE	DESCRIPTION
2400-10	22" x 14"	22" H	3/8" x 3"	END TABLE
2400-30	14" x 32"	16" H	3/8" x 3"	COFFEE TABLE
2400-40	14" x 34"	28" H	3/8" x 3"	SOFA TABLE
2400-50	56" x 24"	28" H	1/2" x 5"	DINING TABLE
2400-60	12" x 36"	16" H	1/2" x 3"	BENCH

2600 series steel base



base only



2600-60
Bench

ITEM #	FOOTPRINT	HEIGHT	MAT. SIZE	DESCRIPTION
2600-50	27" wide	28" H	3" chan.	DINING TABLE
2600-60	12" wide	16" H	2" chan.	BENCH

2700 series steel base



base only



2700-70SPD
Single Ped. Pub Height



2700-60
Bench

ITEM #	FOOTPRINT	HEIGHT	MAT. SIZE	DESCRIPTION
2700-10	14" wide	22" H	3" wide	END TABLE
2700-30	18" wide	16" H	3" wide	COFFEE TABLE
2700-40	14" wide	28" H	3" wide	SOFA TABLE
2700-50	30" wide	28" H	4" wide	DINING TABLE
2700-60	12" wide	16" H	3" wide	BENCH
2700-70SPD	30" x 30"	28" H	4" wide	SINGLE PED. DINING HEIGHT
2700-70SPC	30" x 30"	34" H	4" wide	SINGLE PED. COUNTER HEIGHT
2700-70SPP	30" x 30"	40" H	4" wide	SINGLE PED. PUB HEIGHT





Troyer Design Company has lots slabs available, with many sizes to choose from. We cut all our Live Edge slabs with our own 70 inch saw mill. (Sometimes we get logs in that are wider than our saw mill can cut.) We also kiln dry ALL our own slabs.





Rustic Walnut |
Natural Finish

Silver Lake Shelf

14"W x 48"L x 36"H

14"W x 60"L x 36"H

14"W x 72"L x 36"H

Need a special Live Edge? Troyer Design Company will glue up Live Edge slabs to any length and width. If you need a table top, bar top, counter top, coffee table top or open shelves built to your specific size, just give us a call.

We also offer "pour over" epoxy on tables. It's GREAT on rough sawn tables... the saw marks are there, but the table top is PERFECTLY smooth!

The special "bark on" Live Edge can only be done with our "pour over" epoxy process. This keeps the texture and integrity of natural bark, but creates a clean stable edge for a table that is truly a one-of-a-kind work of art.

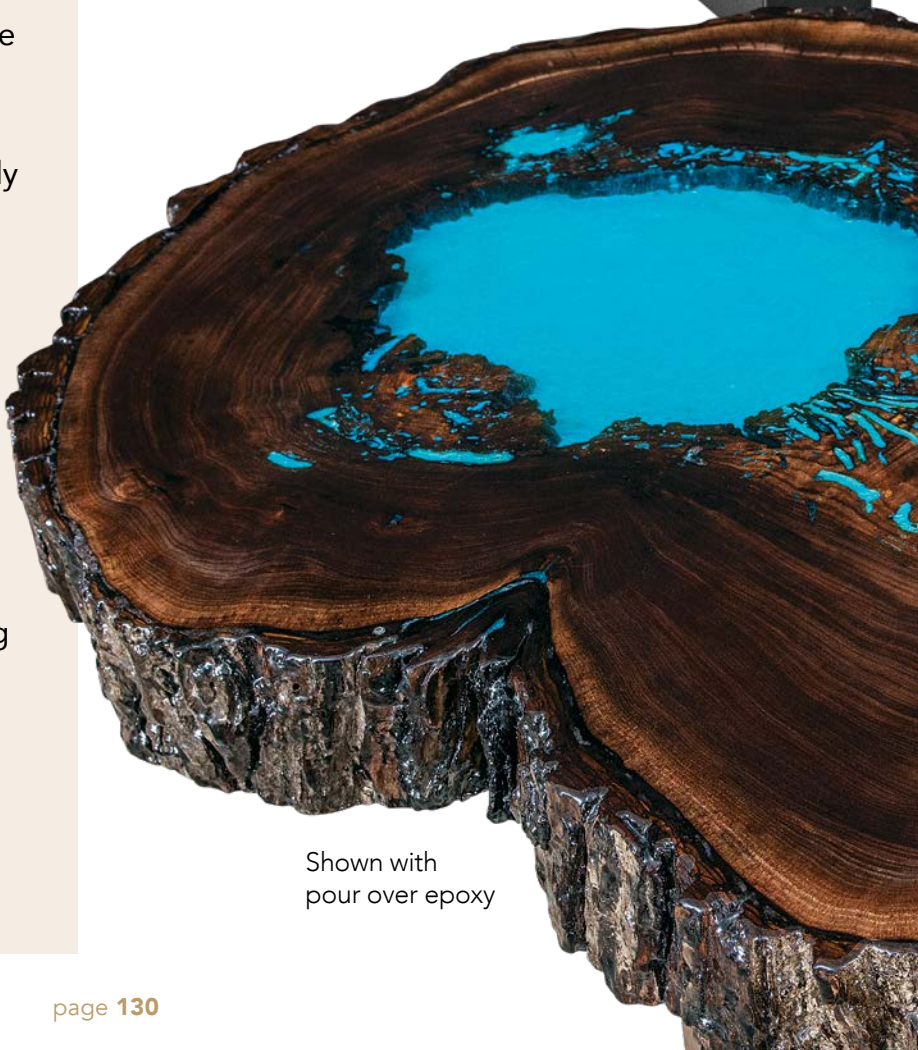
Check out page 114 to see our steel bases and solid tops.

Most of our tables shown in this catalog are available with Live Edge and with all our standard wood species.

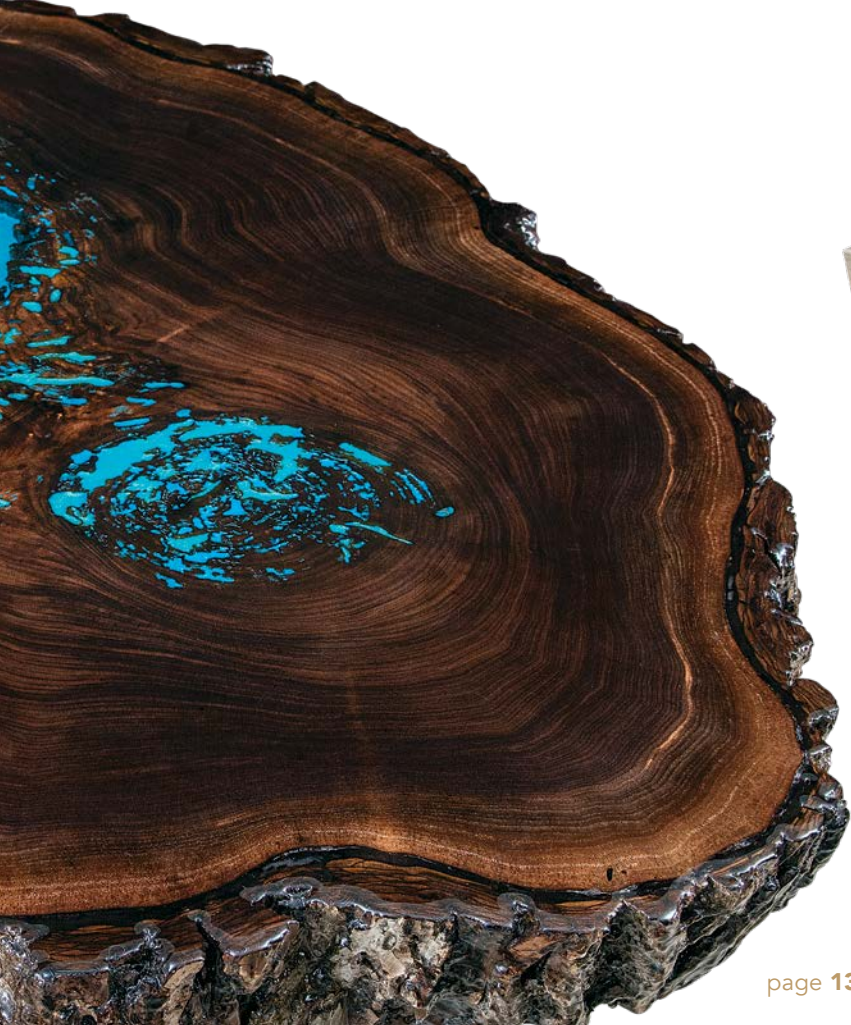
*Let Us Bring the Beauty
of Nature into Your Home!*



Shown with
"pour over"
epoxy and
UB Series steel base



Shown with
pour over epoxy



Custom
designs to fit
your needs...



TROYER
Design
COMPANY